

TACAN RWY 26

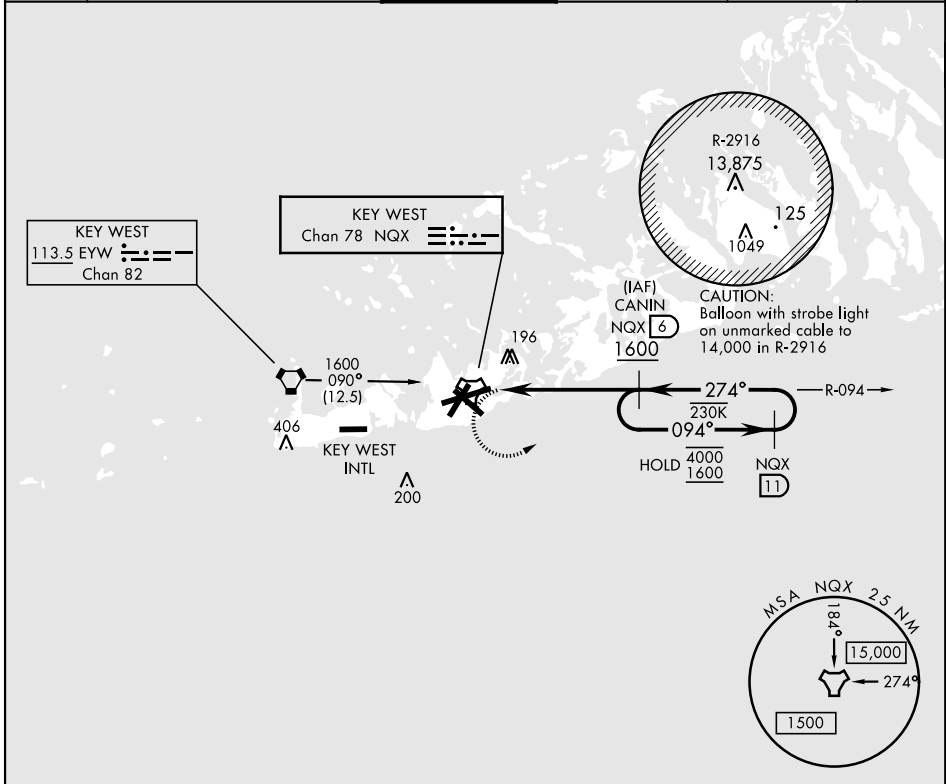
TACAN	NQX	APCH CRS	Rwy Idg	10,001
Chan	78	274°	TDZE	6
			Arpt Elev	6

AL-214 [USN]

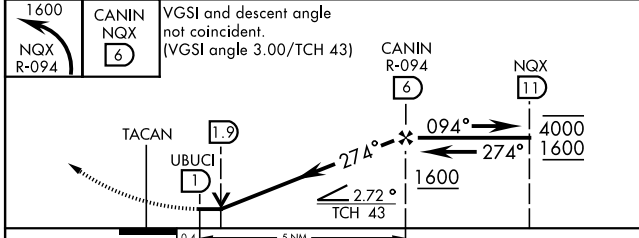
KEY WEST NAS (BOCA CHICA FLD) (KNQX)

MISSED APPROACH: Climbing left turn to 1600 to intercept NQX R-094 to CANIN (NQX R-094/6 DME) and hold.

ATIS ★ 307.025	NAVY KEY WEST APP CON 124.025 313.7	NAVY KEY WEST TOWER ★ 118.575 340.25	GND CON 121.7 336.45	CLNC DEL 121.2 357.4	ASR/PAR
--------------------------	---	--	--------------------------------	--------------------------------	---------

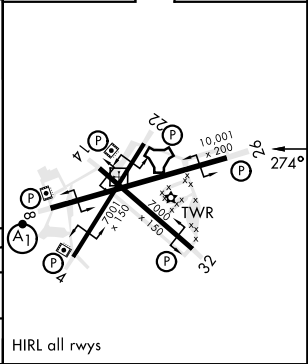


EMEG SAFE ALT 100 NM 15,000



ELEV	6	TDZE	6
------	---	------	---

CATEGORY	A	B	C	D
S-26	460-1	454 (500-1)	460-1 3/8	454 (500-1 3/8)
CIRCLING	460-1 454 (500-1)	500-1 494 (500-1)	500-1 1/2 494 (500-1 1/2)	560-2 554 (600-2)



KEY WEST, FLORIDA 24°34'N-81°41'W KEY WEST NAS (BOCA CHICA FLD) (KNQX)

TACAN RWY 26

SE-3, 11 JUL 2024 to 08 AUG 2024

SE-3, 11 JUL 2024 to 08 AUG 2024