

APP CRS	Rwy Idg	<b>6827</b>
<b>198°</b>	TDZE	<b>3403</b>
	Apt Elev	<b>3449</b>

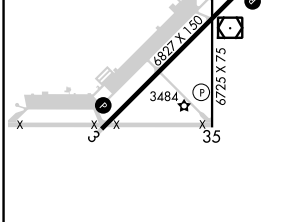
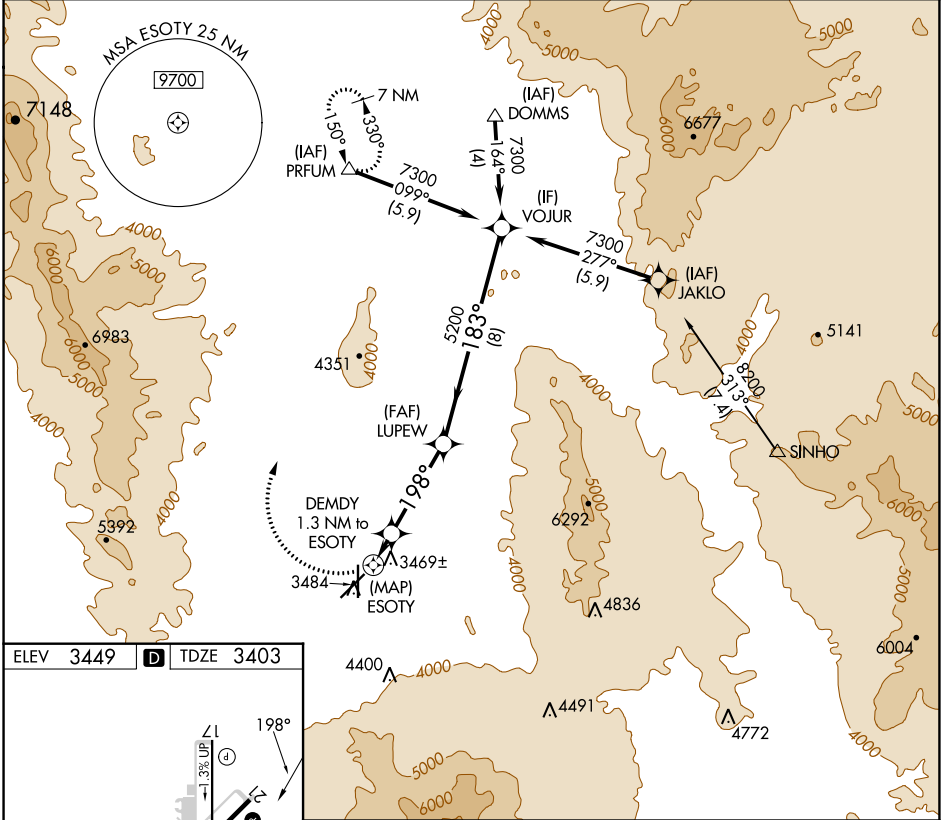
# RNAV (GPS) Y RWY 21

KINGMAN (IGM)

**⚠** DME/DME RNP-0.3 NA. Circling NA for Cat D southeast of Rwy 3-21. Circling Rwy 35 NA at night.

**⚠** MISSED APPROACH: Climbing right turn to 9000 direct PRFUM and hold, continue climb-in-hold to 9000.

ASOS <b>119.275</b>	LOS ANGELES CENTER <b>124.85 319.2</b>	UNICOM <b>122.8</b> (CTAF) <b>📶</b>
------------------------	---	--



9000	PRFUM	VOJUR
	(IAF) DOMMS	(IAF) JAKLO
	(IF) VOJUR	(IAF) SINHO
	(FAF) LUPEW	
	DEMZY 1.3 NM to ESOTY	
	ESOTY	
	5200	7300
	4000	
	198°	183°
	3.03°	
	TCH 45	
	0.5	1.3 NM
	3.7 NM	8 NM
		Procedure Turn NA

REIL Rwy 3 and 21 <b>📶</b>	MIRL Rwy 3-21 and 17-35 <b>📶</b>			
CATEGORY	A	B	C	D
LNAV MDA	3820-1	417 (400-1)	3820-1¼	417 (400-1¼)
CIRCLING	3980-1 531 (600-1)	4100-1 651 (700-1)	4420-3	971 (1000-3)

SW-4, 11 JUL 2024 to 08 AUG 2024

SW-4, 11 JUL 2024 to 08 AUG 2024