

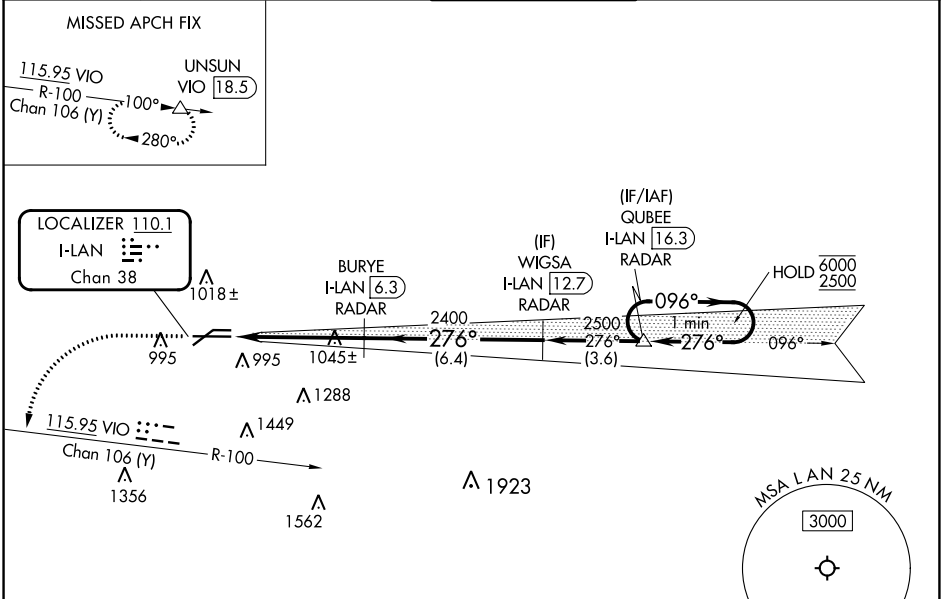
LOC/DME I-LAN <b>110.1</b> Chan <b>38</b>	APP CRS <b>276°</b>	Rwy ldg <b>8506</b> TDZE <b>852</b> Apt Elev <b>861</b>
---	------------------------	---

# ILS or LOC RWY 28L

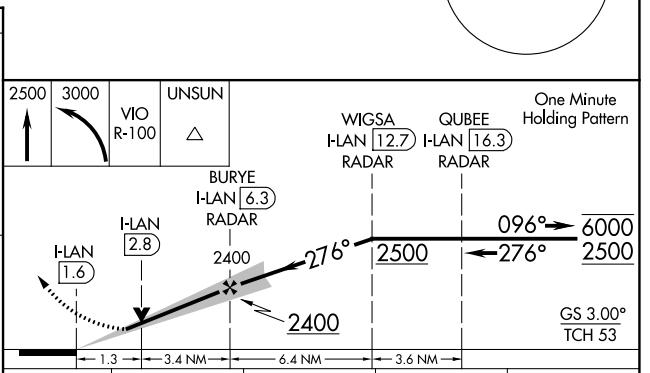
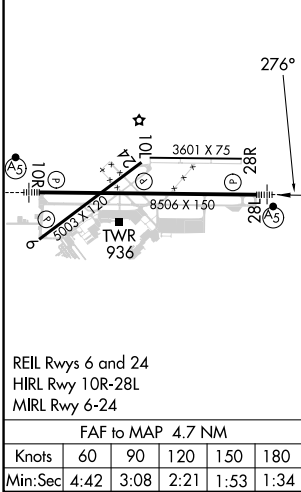
CAPITAL REGION INTL (LAN)

DME required. RADAR required for procedure entry.		MALSR	MISSED APPROACH: Climb to 2500 then climbing left turn to 3000 on VIO VOR/DME R-100 to UNSUN/VIO 18.5 DME and hold.	
<p>Circling Rwy 10L, 28R NA at night. *RVR 1800 authorized with use of FD or AP or HUD to DA.</p>				

ATIS <b>119.75</b>	GREAT LAKES APP CON * <b>118.65 226.4</b>	LANSING TOWER <b>119.9 240.9</b>	GND CON <b>121.9</b>	CLNC DEL <b>123.675</b>
-----------------------	--	-------------------------------------	-------------------------	----------------------------



ELEV 861	<b>D</b>	TDZE 852
----------	----------	----------



CATEGORY	A	B	C	D
S-ILS 28L*	1052/24 200 (200-1/2)			
S-LOC 28L	1300/24 448 (500-1/2)	1300/45 448 (500-7/8)		
<b>C</b> CIRCLING	1380-1 519 (600-1)	1600-2 739 (800-2)	1760-3 899 (900-3)	

EC-1, 11 JUL 2024 to 08 AUG 2024

EC-1, 11 JUL 2024 to 08 AUG 2024