


LOC/DME I-LRD	APP CRS	18R	18L
111.9	178°	Rwy Idg 8743	8236
Chan 56		TDZE 504	499
		Apt Elev 508	508

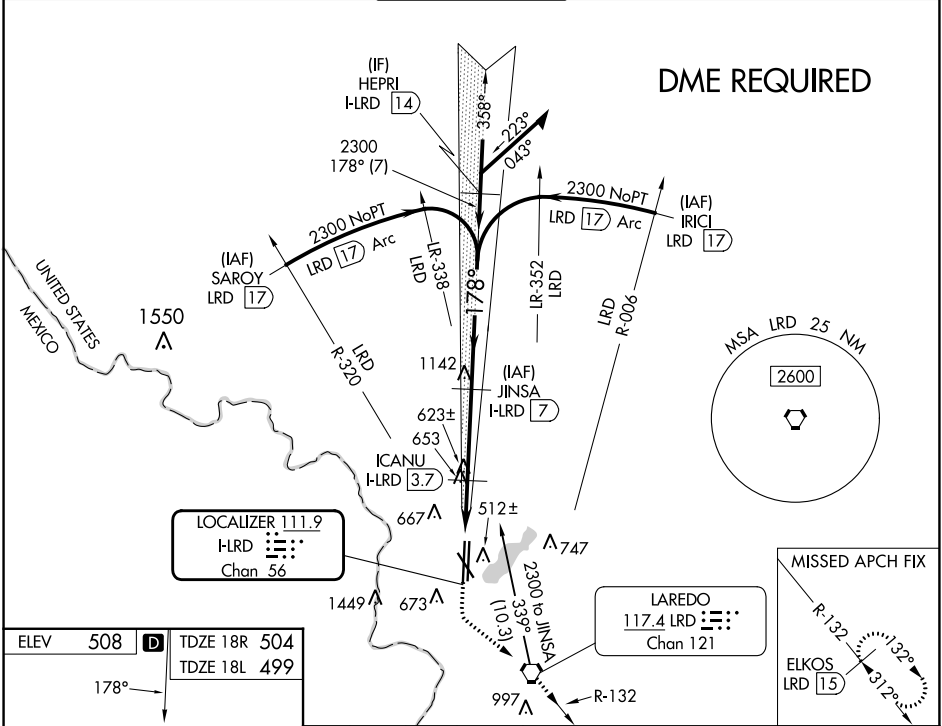
ILS or LOC RWY 18R

LAREDO INTL (L.R.D)

⚠ Circling NA west of Rwy 14 and 36L.
⚠ DME required.
 For inop ALS, increase S-ILS 18R Cat E visibility to 3/4 SM and increase S-LOC 18R Cat C/D/E visibility to 1 1/2 SM.

MALSR

MISSED APPROACH: Climb to 1100 then climbing left turn to 2500 direct LRD VORTAC and on LRD VORTAC R-132 to ELKOS/LRD 15 DME and hold.

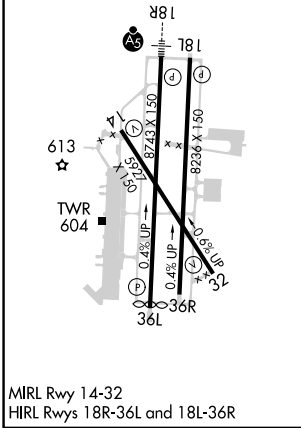
ATIS 125.775	HOUSTON CENTER 127.8 307.2	LAREDO TOWER ★ 120.1(CTAF) 0 257.9	GND CON 121.8	UNICOM 122.95
------------------------	--------------------------------------	--	-------------------------	-------------------------



SC-3, 11 JUL 2024 to 08 AUG 2024

SC-3, 11 JUL 2024 to 08 AUG 2024

ELEV 508	D TDZE 18R 504
	TDZE 18L 499



MIRL Rwy 14-32
 HIRL Rwy 18R-36L and 18L-36R

1100 2500 LRD ELKOS LRD 15 VGSI and ILS glidepath not coincident (VGSI Angle 3.00/TCH 50).
 Remain within 15 NM
 Use I-LRD DME when on the localizer course.
 *LOC only
 *I-LRD 2.7
 I-LRD 1.5
 ICANU I-LRD 3.7
 2300 358° 2300
 178° 2300
 1260* 2300
 1.2 NM 1.1 NM 3.3 NM
 GS 3.00° TCH 57

CATEGORY	A	B	C	D	E
S-ILS 18R	704-1/2 200 (200-1/2)				
S-LOC 18R	920-1/2	416 (500-1/2)	920-3/4	416 (500-3/4)	
SIDESTEP 18L	920-1	421 (500-1)	920-1 1/2	920-2	421 (500-2)
			421 (500-1 1/2)		
C CIRCLING	940-1	980-1	1100-1 1/2	1200-2 1/4	1200-2 1/2
	432 (500-1)	472 (500-1)	592 (600-1 1/2)	692 (700-2 1/4)	692 (700-2 1/2)