

VORTAC LRD 117.4 Chan 121	APP CRS 139°	Rwy Idg TDZE Apt Elev 5927 508 508
---	------------------------	--

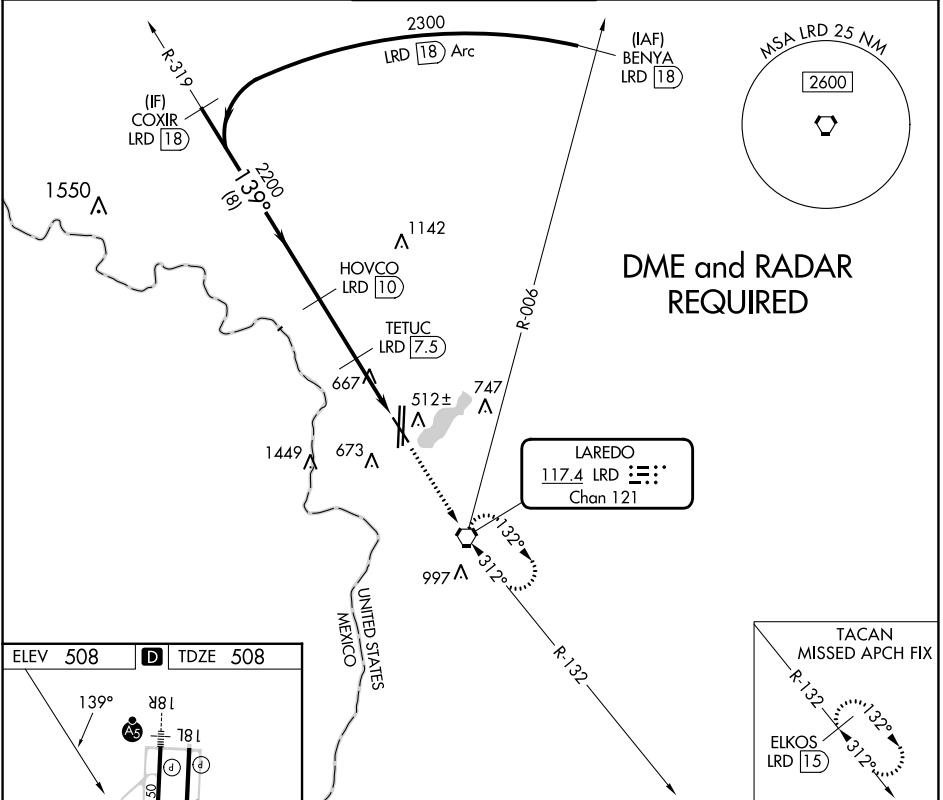
VOR or TACAN RWY 14

LAREDO INTL (LRD)

⚠ Circling NA west of Rwy 14 and 36L.
⚠ DME required.

MISSED APPROACH: Climb to 2500 direct LRD VORTAC and hold, continue climb-in-hold to 2500 (TACAN aircraft continue on LRD VORTAC R-132 to ELKOS/15 DME and hold SE, 312° inbound).

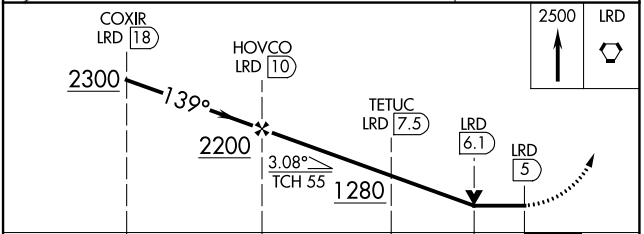
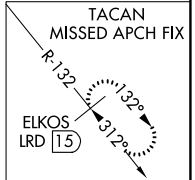
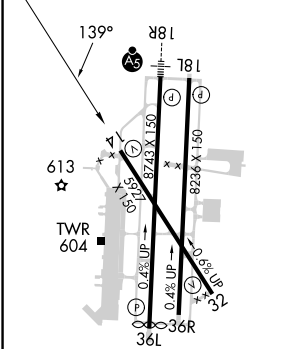
ATIS 125.775	HOUSTON CENTER 127.8 307.2	LAREDO TOWER ★ 120.1 (CTAF) 0 257.9	GND CON 121.8	UNICOM 122.95
------------------------	--------------------------------------	---	-------------------------	-------------------------



SC-3, 11 JUL 2024 to 08 AUG 2024

SC-3, 11 JUL 2024 to 08 AUG 2024

ELEV 508	D	TDZE 508
----------	----------	----------



CATEGORY	A	B	C	D	E
S-14	920-1	412 (500-1)	920-1¼	412 (500-1¼)	920-1½ 412 (500-1½)
C CIRCLING	940-1 432 (500-1)	980-1 472 (500-1)	1100-1½ 592 (600-1½)	1200-2¼ 692 (700-2¼)	1200-2½ 692 (700-2½)

LAREDO, TEXAS
MIRL Rwy 14-32
HIRL Rwy 18R-36L and 18L-36R

27°33'N-99°28'W

LAREDO INTL (LRD) VOR or TACAN RWY 14