

LAS VEGAS, NEVADA

# LOC Y RWY 21L

LOC I-DIQ <b>109.1</b>	APCH CRS <b>209°</b>	Rwy Idg 21L <b>10,051</b> TDZE <b>1865</b> Arprt Elev <b>1869</b>	Rwy Idg 21R <b>10,120</b> TDZE <b>1869</b>	AL-227 [USAF]	NELLIS AFB (KLSV)
---------------------------	-------------------------	---	--	---------------	-------------------

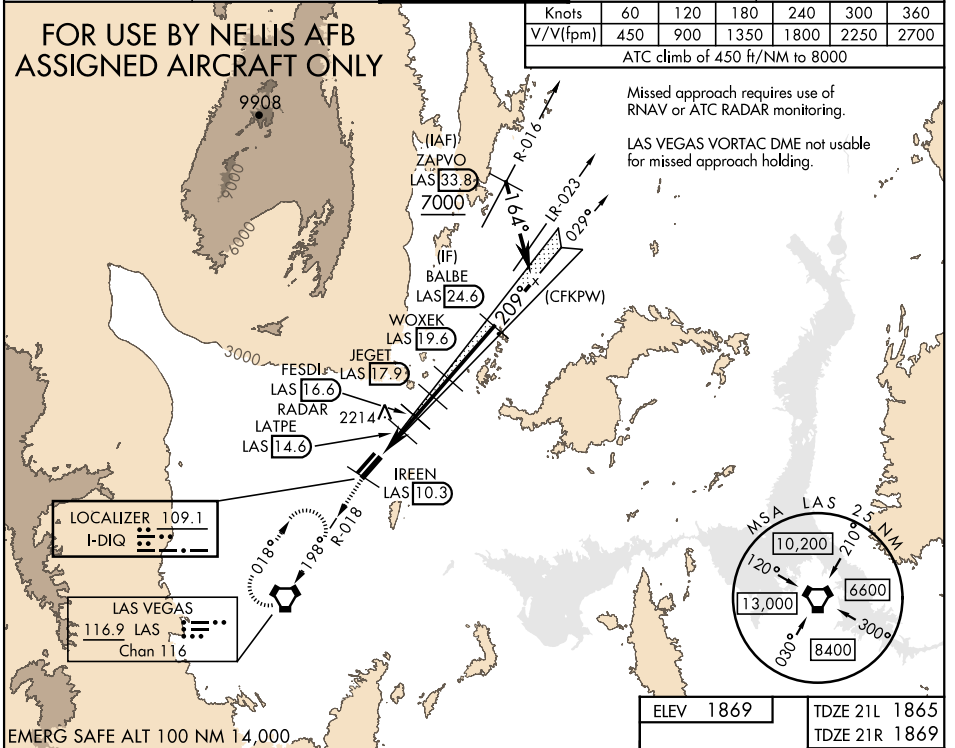
RADAR or DME required.		ALSF-1 	MISSED APPROACH: Climb to 8000, intercept the LAS VORTAC R-018 to 10.3 DME (IREEN), then to LAS and hold, continue climb in hold to 8000.
* When ALS inop, increase vis to 1 1/8 miles. ** Circling not authorized SE of Rwy 3R-21L.			

ATIS <b>270.1</b>	APP CON <b>124.95 273.55</b>	TOWER <b>132.55 327.0</b>	GND CON <b>121.8 275.8</b>	CLNC DEL <b>120.9 289.4</b>
----------------------	---------------------------------	------------------------------	-------------------------------	--------------------------------

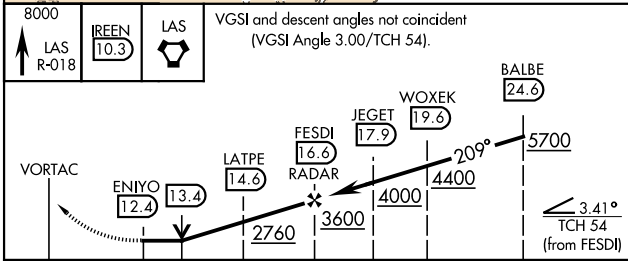
## FOR USE BY NELLIS AFB ASSIGNED AIRCRAFT ONLY

Knots	60	120	180	240	300	360
V/V(ftpm)	450	900	1350	1800	2250	2700

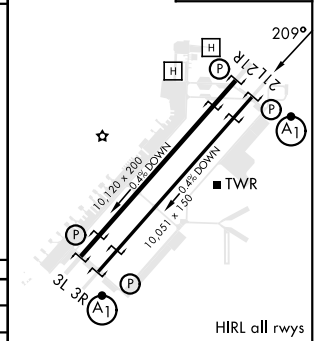
ATC climb of 450 ft/NM to 8000



EMERG SAFE ALT 100 NM 14,000



ELEV 1869	TDZE 21L 1865
	TDZE 21R 1869



CATEGORY	C	D	E
S-21L *	2360/50	495 (500-1)	
SIDESTEP 21R	2360-1 3/8	491 (500-1 3/8)	
CIRCLING **	2560-2 691 (700-2)	2840-3 971 (1000-3)	3140-3 1271 (1300-3)

FAF to MAP 4.2 NM					
Knots	60	90	120	150	180
Min:Sec	4:12	2:48	2:06	1:41	1:24

LAS VEGAS, NEVADA  
Amdt 9 10AUG23

36°14'N-115°02'W

NELLIS AFB (KLSV)

# LOC Y RWY 21L

SW-4, 11 JUL 2024 to 08 AUG 2024

SW-4, 11 JUL 2024 to 08 AUG 2024