

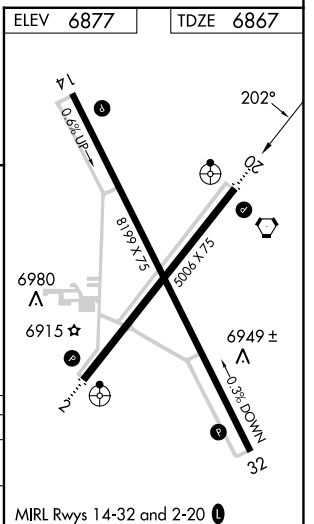
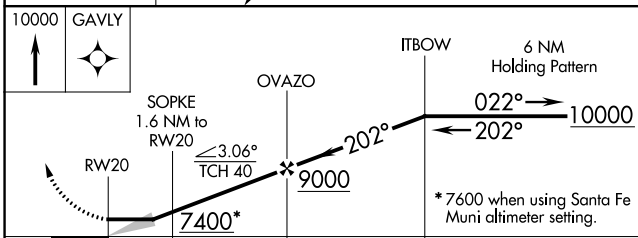
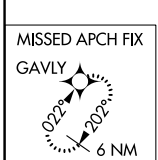
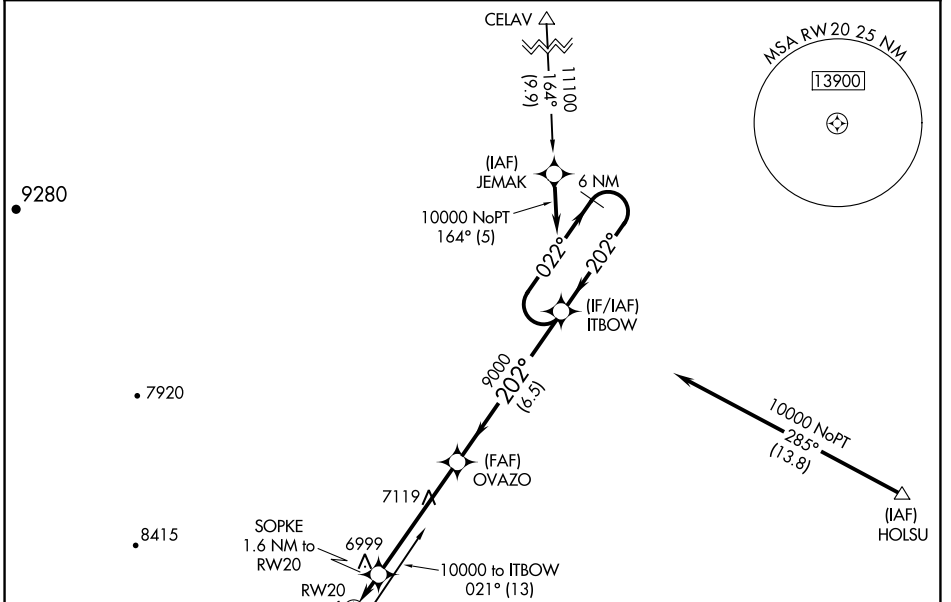
RNAV (GPS) RWY 20

LAS VEGAS MUNI (LVS)

APP CRS 202°	Rwy Idg 5006
	TDZE 6867
	Apt Elev 6877

RNP APCH-GPS.	ODALS	MISSED APPROACH: Climb to 10000 direct GAVLY and hold.
<p>⚠ When local altimeter setting not received, use Santa Fe Rgnl altimeter setting and increase all MDAs 200 feet; increase LNAV Cat C visibility to 1½ SM and Circling Cat C visibility to 2¼ SM. Straight-in minimums NA when using Santa Fe Muni altimeter setting.</p>		

ASOS 118.525	ALBUQUERQUE CENTER 132.8 346.35	UNICOM 122.8 (CTAF) 0
------------------------	---	---------------------------------



CATEGORY	A	B	C	D
LNAV MDA	7260-¾ 393 (400-¾)			NA
CIRCLING	7420-1	543 (600-1)	7420-1½ 543 (600-1½)	NA

SW-1, 11 JUL 2024 to 08 AUG 2024

SW-1, 11 JUL 2024 to 08 AUG 2024