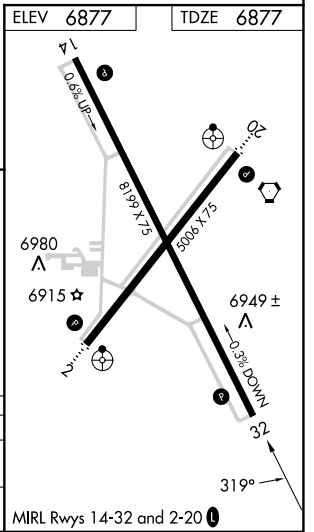
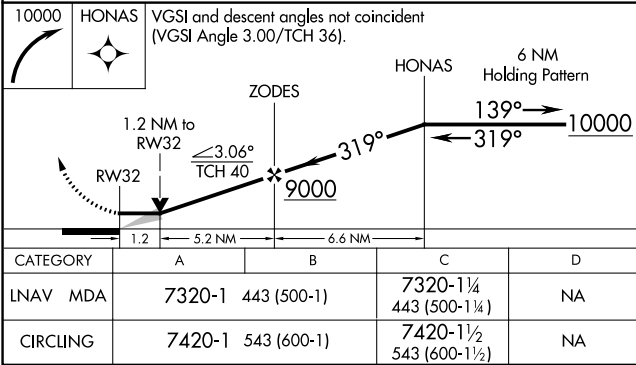
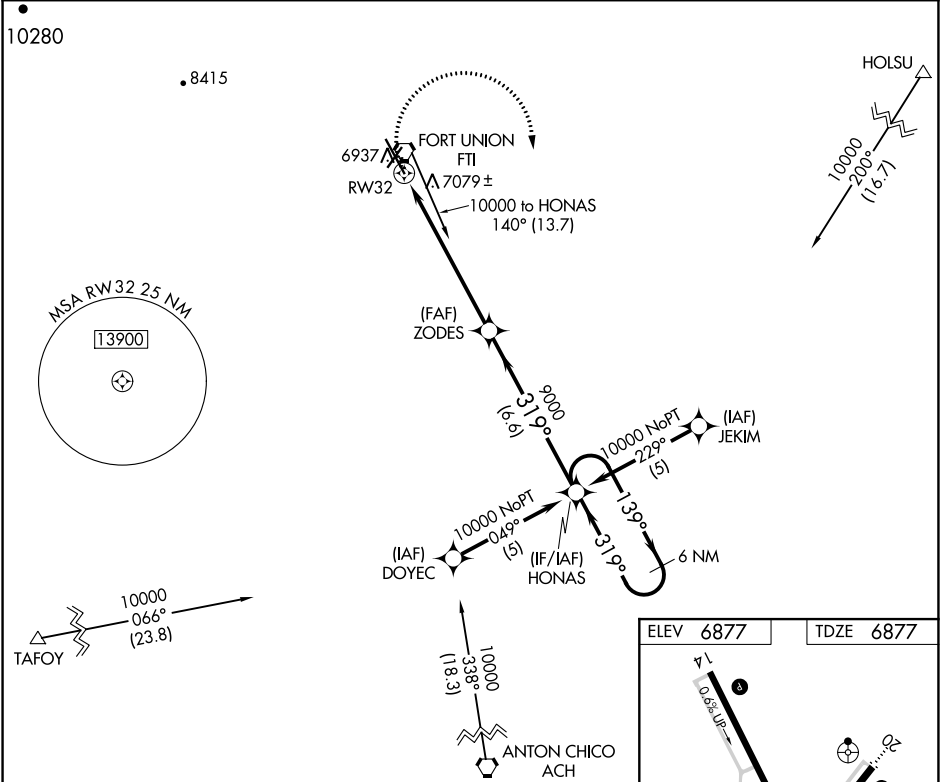


# RNAV (GPS) RWY 32

LAS VEGAS MUNI (LVS)

APP CRS <b>319°</b>	Rwy Idg TDZE Apt Elev	<b>8199</b> <b>6877</b> <b>6877</b>
------------------------	-----------------------------	---

<p>RNP APCH-GPS.</p> <p>▼ When local altimeter not received, used Santa Fe Rgnl altimeter setting and increase all MDA 200 feet; increase LNAV Cat C visibility to 1 3/4 SM and Circling Cat C visibility to 2 1/4 SM. VDP NA when using Santa Fe Muni altimeter setting.</p>		<p>MISSED APPROACH: Climbing right turn to 10000 direct HONAS and hold.</p>
<p>ASOS <b>118.525</b></p>	<p>ALBUQUERQUE CENTER <b>132.8 346.35</b></p>	<p>UNICOM <b>122.8 (CTAF)</b></p>



SW-1, 11 JUL 2024 to 08 AUG 2024

SW-1, 11 JUL 2024 to 08 AUG 2024