

WAAS CH 53528 W18A	APP CRS 180°	Rwy Idg 5199 TDZE 430 Apt Elev 430
--	------------------------	---

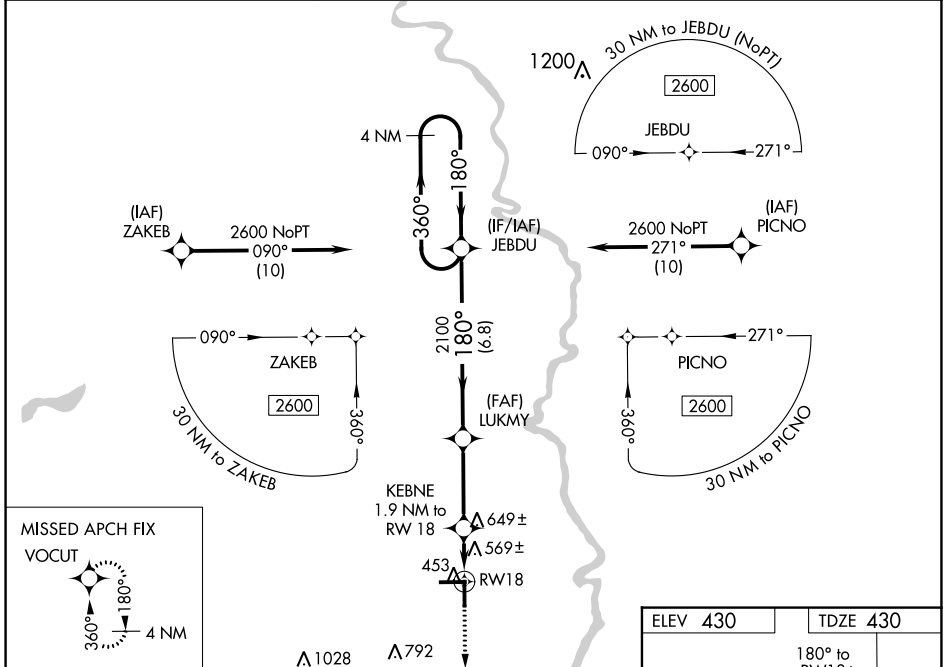
RNAV (GPS) RWY 18

LAWRENCEVILLE-VINCENNES INTL (LWV)

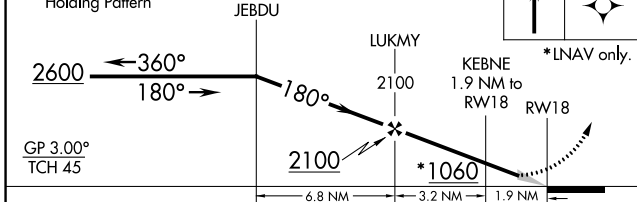
⚠ For uncompensated Baro-VNAV systems, LNAV/VNAV NA below -15°C (5°F) or above 41°C (105°F).
⚠ DME/DME RNP-0.3 NA. Baro-VNAV and VDP NA when using Mount Carmel altimeter setting. When local altimeter setting not received, use Mount Carmel altimeter setting: increase LPV DA 656 feet; increase LNAV/VNAV DA to 902 feet and all visibilities ½ SM; increase all MDAs 40 feet and LNAV visibility Cat C/D ¼ SM; and Circling visibility Cat D ¼ SM. Circling to Rwy 36 NA at night.

MISSED APPROACH:
Climb to 2600 direct VOCUT and hold.

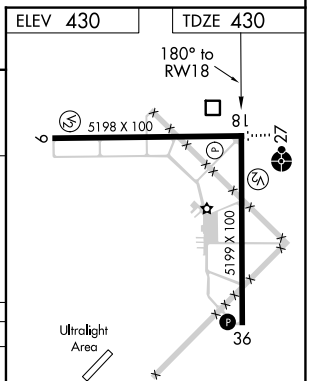
ASOS 118.0	EVANSVILLE APP CON ★ 125.6 343.7	UNICOM 122.8 (CTAF) ①
----------------------	--	---------------------------------



4 NM Holding Pattern
 VGSI and RNAV glidepath not coincident (VGSI Angle 3.00/TCH 25).
 2600 VOCUT



CATEGORY	A	B	C	D
LPV DA		630-¾	200 (200-¾)	
LNAV/VNAV DA		876-1½	446 (500-1½)	
LNAV MDA	940-1	510 (600-1)	940-1¾	510 (600-1¾)
CIRCLING	940-1	510 (600-1)	940-1½	1160-2¼ 730 (800-2¼)



REIL Rwy 9, 27, 18 and 36 ①
 MRL Rwy 9-27 and 18-36 ①