

LOC/DME I-CNL <b>111.3</b> Chan 50	APP CRS <b>047°</b>	Rwy Ldg <b>7200</b> TDZE <b>260</b> Apt Elev <b>266</b>
--	------------------------	---

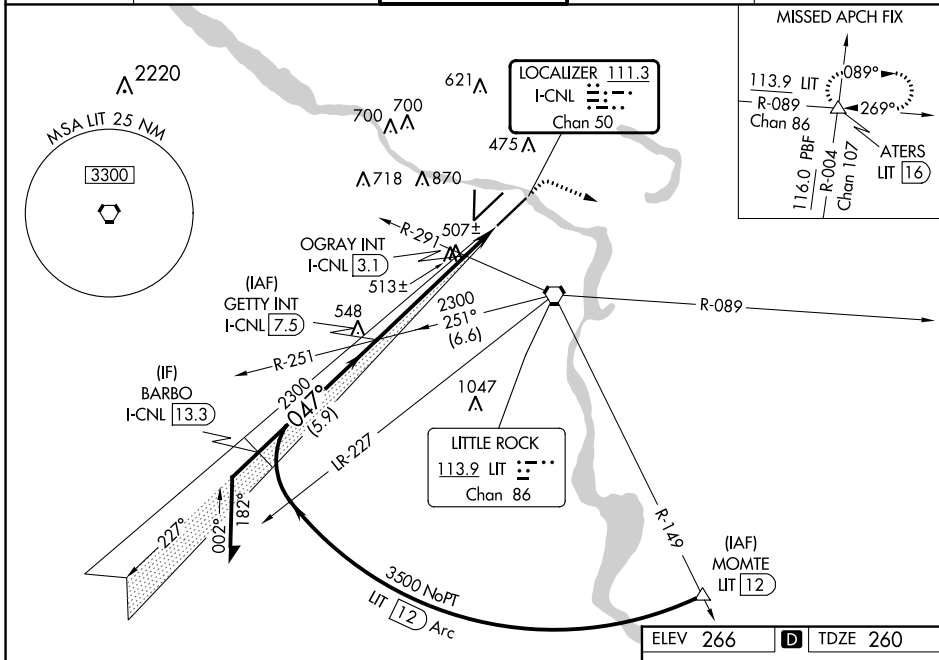
**ILS or LOC RWY 4R**  
BILL AND HILLARY CLINTON NTL/ADAMS FLD (LIT)

▼ Rwy 4R helicopter visibility reduction below RVR 4000 NA. Simultaneous approach authorized. For inop ALS, increase S-ILS 4R all Cats visibility to RVR 4500. For inop ALS, increase S-LOC 4R Cats A/B visibility to RVR 5500 and Cats C/D visibility to 1 1/4 SM. OGRAY Fix Minimums: For inop ALS, increase S-LOC 4R Cats A/B visibility to RVR 5500 and Cats C/D to 1 1/4 SM.



MISSED APPROACH: Climb to 800 then climbing right turn to 4000 on heading 110° and LIT VORTAC R-089 to ATERS INT/LIT 16 DME and hold.

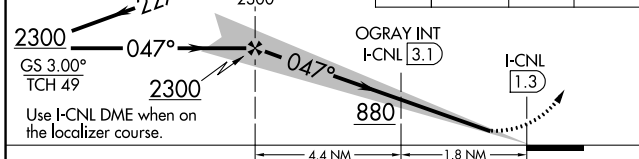
D-ATIS <b>125.65</b>	LITTLE ROCK APP CON <b>135.4 353.6</b>	ADAMS TOWER <b>118.7 257.8</b>	GND CON <b>121.9 339.8</b>	CLNC DEL <b>118.95</b>
-------------------------	---	-----------------------------------	-------------------------------	---------------------------



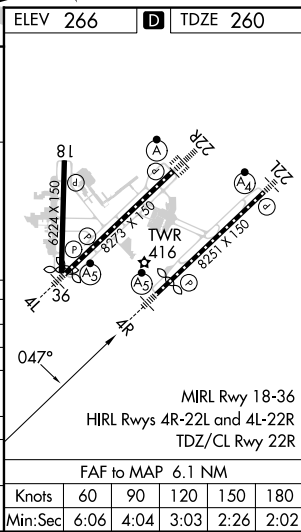
SC-1, 11 JUL 2024 to 08 AUG 2024

SC-1, 11 JUL 2024 to 08 AUG 2024

Remain within 10 NM	GETTY INT I-CNL (7.5)	800	4000	LIT R-089	ATERS
---------------------	-----------------------	-----	------	-----------	-------



CATEGORY	A	B	C	D
S-ILS 4R		523/40	263 (300-3/4)	
S-LOC 4R	880/40	620 (700-3/4)	880-1 3/8	620 (700-1 1/2)
<b>C</b> CIRCLING	880-1 614 (700-1)	1000-1 734 (800-1)	1180-2 3/4 914 (1000-2 3/4)	1180-3 914 (1000-3)
OGRAY (DUAL VOR RECEIVERS OR DME REQUIRED)				
S-LOC 4R	780/40	520 (600-3/4)	780/55	520 (600-1)
<b>C</b> CIRCLING	820-1 554 (600-1)	1000-1 734 (800-1)	1180-2 3/4 914 (1000-2 3/4)	1180-3 914 (1000-3)



MIRL Rwy 18-36  
HIRL Rwys 4R-22L and 4L-22R  
TDZ/CL Rwy 22R

FAF to MAP 6.1 NM					
Knots	60	90	120	150	180
Min:Sec	6:06	4:04	3:03	2:26	2:02