

WAAS CH <b>70611</b> <b>W04B</b>	APP CRS <b>046°</b>	Rwy Idg <b>7200</b> TDZE <b>260</b> Apt Elev <b>266</b>
--	------------------------	---

# RNAV (GPS) RWY 4R

BILL AND HILLARY CLINTON NTL/ADAMS FLD (LIT)

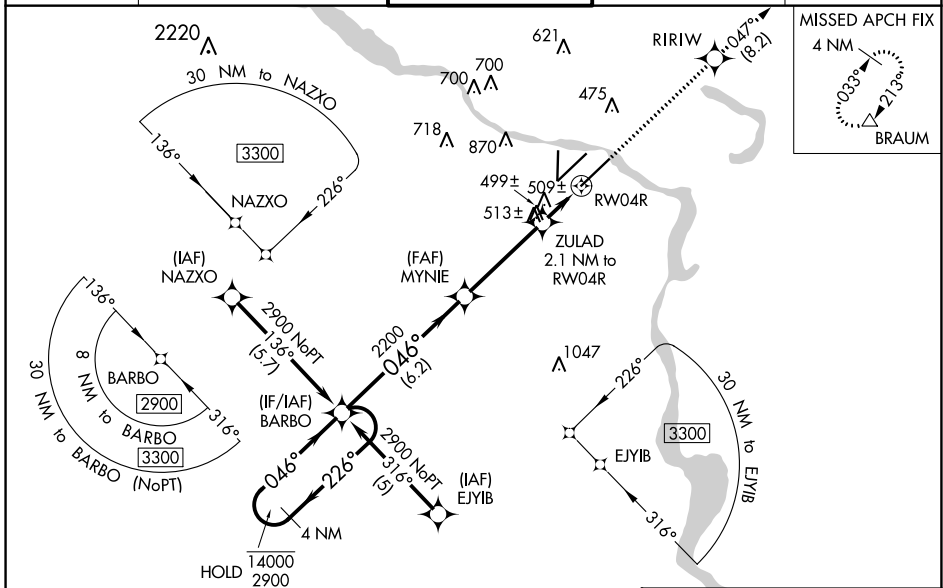
RNP APCH-GPS.

**⚠** Rwy 4R helicopter visibility reduction below RVR 4000 NA. For uncompensated Baro-VNAV systems, LNAV/VNAV NA below -1.5°C or above 54°C. Simultaneous approach authorized. LNAV procedure NA during simultaneous operations. Use of FD or AP required during simultaneous operations. For inop ALS, increase LPV all Cats visibility to RVR 4500, LNAV/VNAV all Cats visibility to 1½ SM and LNAV Cat A/B visibility to RVR 5500 and Cat C/D to 1½ SM.

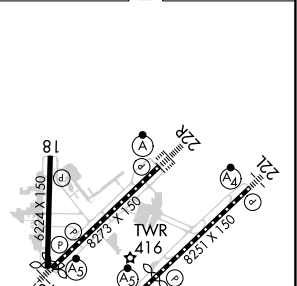
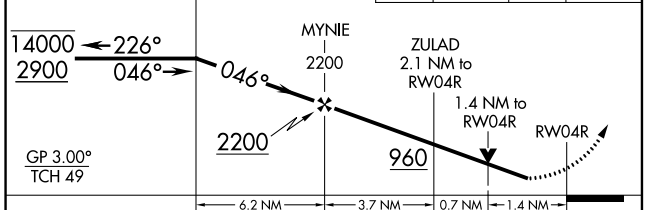


MISSED APPROACH:  
Climb to 2900 direct RIRIW and on track 047° to BRAUM and hold.

D-ATIS <b>125.65</b>	LITTLE ROCK APP CON <b>135.4 353.6</b>	ADAMS TOWER <b>118.7 257.8</b>	GND CON <b>121.9 339.8</b>	CLNC DEL <b>118.95</b>
-------------------------	---	-----------------------------------	-------------------------------	---------------------------



ELEV 266	<b>D</b> TDZE 260
----------	-------------------



CATEGORY	A	B	C	D
LPV DA	574/40		314 (400-¾)	
LNAV/VNAV DA	756/50		496 (500-1)	
LNAV MDA	760/40 500 (500-¾)		760/50 500 (500-1)	
<b>C</b> CIRCLING	820-1 554 (600-1)	1000-1 734 (800-1)	1180-2¾ 914 (1000-2¾)	1180-3 914 (1000-3)

MIRL Rwy 18-36  
HIRL Rwy 4R-22L and 4L-22R  
TDZ/CL Rwy 22R

SC-1, 11 JUL 2024 to 08 AUG 2024

SC-1, 11 JUL 2024 to 08 AUG 2024