

WAAS CH <b>69506</b> <b>W27A</b>	APP CRS <b>270°</b>	Rwy Idg TDZE <b>717</b> Apt Elev <b>717</b>	<b>5000</b>
--	------------------------	---	-------------

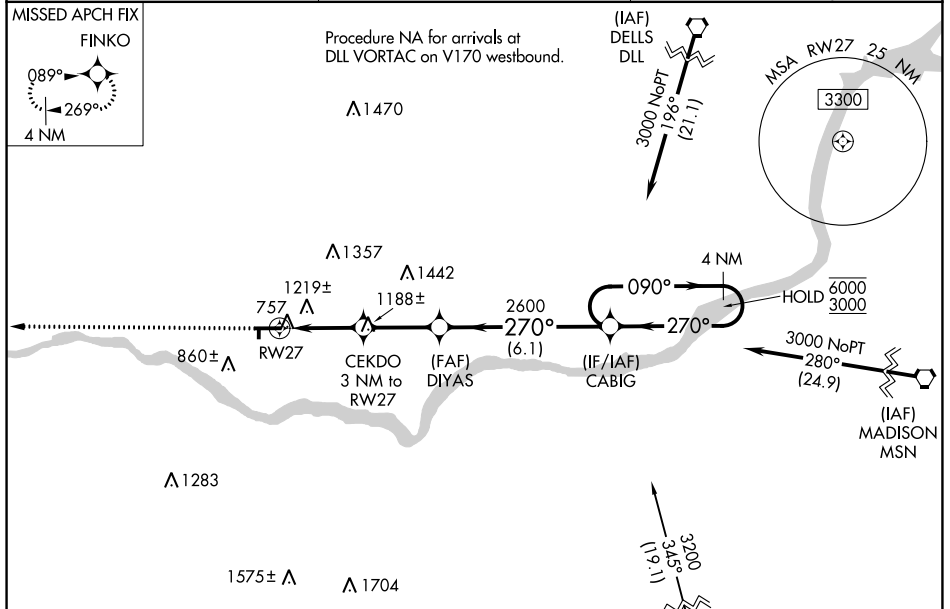
# RNAV (GPS) RWY 27

TRI-COUNTY RGNL (LNR)

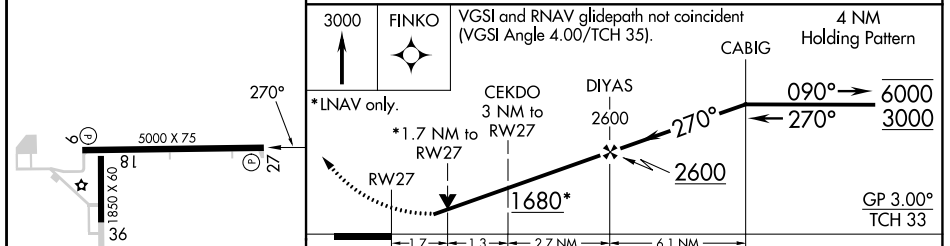
**RNP APCH**  
 Circling Rwy 18, 36 NA at night. Baro-VNAV and VDP NA when using Dane County Rgnl-Truax Fld altimeter setting. Rwy 27 helicopter visibility reduction below ¾ SM NA. For uncompensated Baro-VNAV systems, LNAV/VNAV NA below -22°C or above 54°C. When local altimeter setting not received, use Dane County Rgnl-Truax Fld altimeter setting and increase LPV DA to 1485, LNAV/VNAV DA to 1694, and all MDA 120 feet. Increase LPV visibility all Cats and Circling visibility Cat C ½ SM, LNAV visibility Cat A and Circling visibility Cat A ¼ SM.

**MISSED APPROACH:**  
 Climb to 3000 direct FINKO and hold.

ASOS <b>119.425</b>	MADISON APP CON * <b>135.45 343.7</b>	UNICOM <b>123.0 (CTAF)</b>
------------------------	--	-------------------------------



ELEV 717	TDZE 717
----------	----------



	Category A	Category B	Category C	Category D
LPV DA	1375-2	658 (700-2)		NA
LNAV/VNAV DA	1584-4	867 (900-4)		NA
LNAV MDA	1480-1 763 (800-1)	1480-1¼ 763 (800-1¼)	1480-2½ 763 (800-2½)	NA
CIRCLING	1520-1 803 (900-1)	1520-1¼ 803 (900-1¼)	1560-2½ 843 (900-2½)	NA

EC-3, 11 JUL 2024 to 08 AUG 2024

EC-3, 11 JUL 2024 to 08 AUG 2024