

WAAS CH 78206 W09A	APP CRS 090°	Rwy ldg 5000 TDZE 717 Apt Elev 717
--------------------------	-----------------	--

# RNAV (GPS) RWY 9

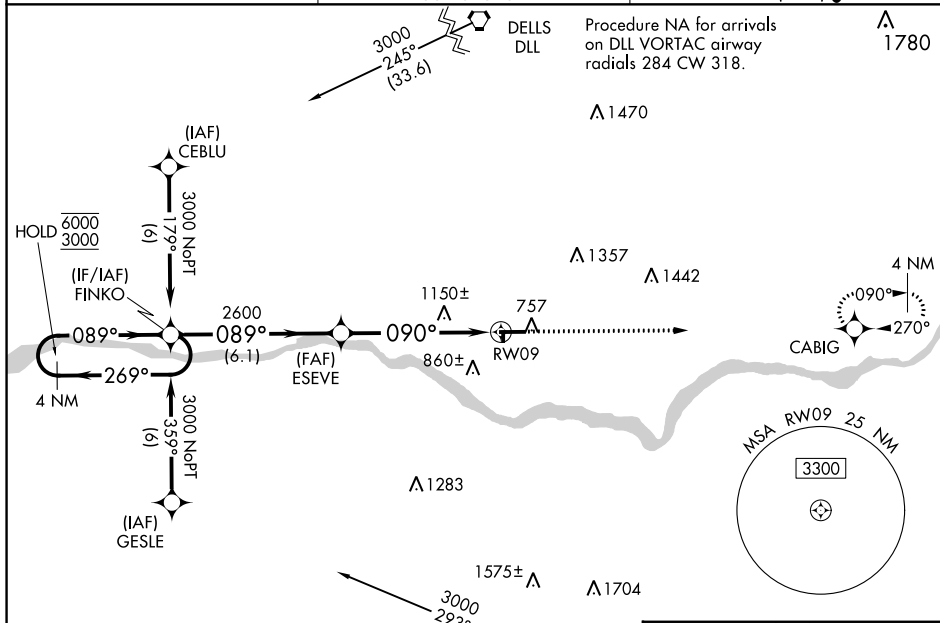
TRI-COUNTY RGNL (LNR)

**RNP APCH**

▼ Circling Rwy 18, 36 NA at night. Baro-VNAV and VDP NA when using Dane County Rgnl-Truax Fld altimeter setting. Rwy 9 helicopter visibility reduction below  $\frac{3}{4}$  SM NA. For uncompensated Baro-VNAV systems, LNAV/VNAV NA below -22°C or above 54°C. When local altimeter setting not received, use Dane County Rgnl-Truax Fld altimeter setting and increase LPV DA to 1104. LNAV/VNAV DA to 1769, and all MDA 120 feet. Increase LPV visibility all Cats  $\frac{1}{8}$  SM, LNAV visibility Cat C and Circling visibility Cat A  $\frac{1}{4}$  SM, Circling visibility Cat C  $\frac{1}{2}$  SM.

❗ MISSED APPROACH:  
Climb to 3000 direct CABIG and hold.

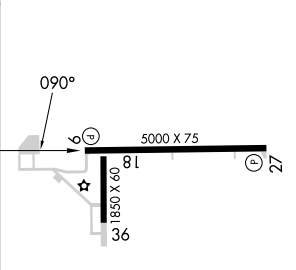
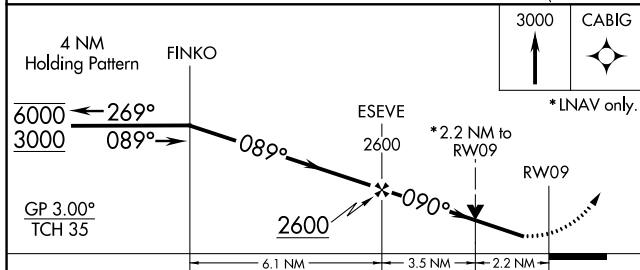
ASOS <b>119.425</b>	MADISON APP CON * <b>135.45 343.7</b>	UNICOM <b>123.0 (CTAF) 0</b>
------------------------	--	---------------------------------



EC-3, 11 JUL 2024 to 08 AUG 2024

EC-3, 11 JUL 2024 to 08 AUG 2024

ELEV 717	TDZE 717
----------	----------



CATEGORY	A	B	C	D
LPV DA	994-1	277 (300-1)		NA
LNAV/VNAV DA	1659-4	942 (1000-4)		NA
LNAV MDA	1460-1 743 (800-1)	1460-1 $\frac{1}{4}$ 743 (800-1 $\frac{1}{4}$ )	1460-2 $\frac{1}{4}$ 743 (800-2 $\frac{1}{4}$ )	NA
CIRCLING	1520-1 803 (900-1)	1520-1 $\frac{1}{4}$ 803 (900-1 $\frac{1}{4}$ )	1560-2 $\frac{1}{2}$ 843 (900-2 $\frac{1}{2}$ )	NA

REIL Rwy 9 and 27 0  
MRL Rwy 9-27 and 18-36 0