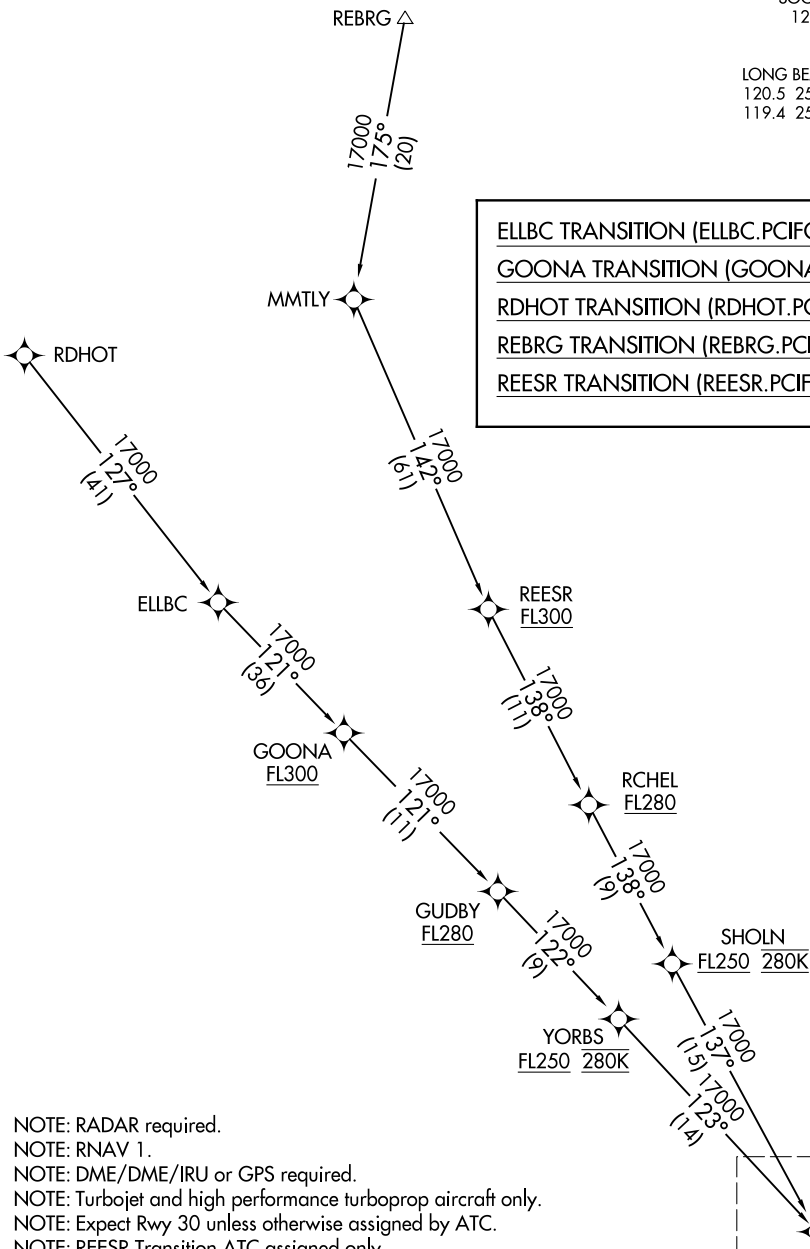


PCIFC TWO ARRIVAL (RNAV) Transition Routes

LONG BEACH (DAUGHERTY FLD) (LGB)
LONG BEACH, CALIFORNIA

SOCAL APP CON
127.4 263.025
ATIS
127.75
LONG BEACH TOWER ★
120.5 257.6 (Rwy 12)
119.4 257.6 (Rwy 30)

- ELLBC TRANSITION (ELLBC.PCIFC2)
- GOONA TRANSITION (GOONA.PCIFC2)
- RDHOT TRANSITION (RDHOT.PCIFC2)
- REBRG TRANSITION (REBRG.PCIFC2)
- REESR TRANSITION (REESR.PCIFC2)



NOTE: RADAR required.
 NOTE: RNAV 1.
 NOTE: DME/DME/IRU or GPS required.
 NOTE: Turbojet and high performance turboprop aircraft only.
 NOTE: Expect Rwy 30 unless otherwise assigned by ATC.
 NOTE: REESR Transition ATC assigned only.

(CONTINUED ON FOLLOWING PAGE)

NOTE: Chart not to scale.

See following page for Arrival Routes.

SW-3, 11 JUL 2024 to 08 AUG 2024

SW-3, 11 JUL 2024 to 08 AUG 2024