

|   |                        |   |
|---|------------------------|---|
| LOC/DME I-OSS<br><b>108.5</b><br>Chan <b>22</b> | APP CRS<br><b>251°</b> | Rwy Idg <b>8926</b><br>TDZE <b>122</b><br>Apt Elev <b>128</b> |
|---|------------------------|---|

# ILS RWY 24R (CAT II & III)

LOS ANGELES INTL (LAX)

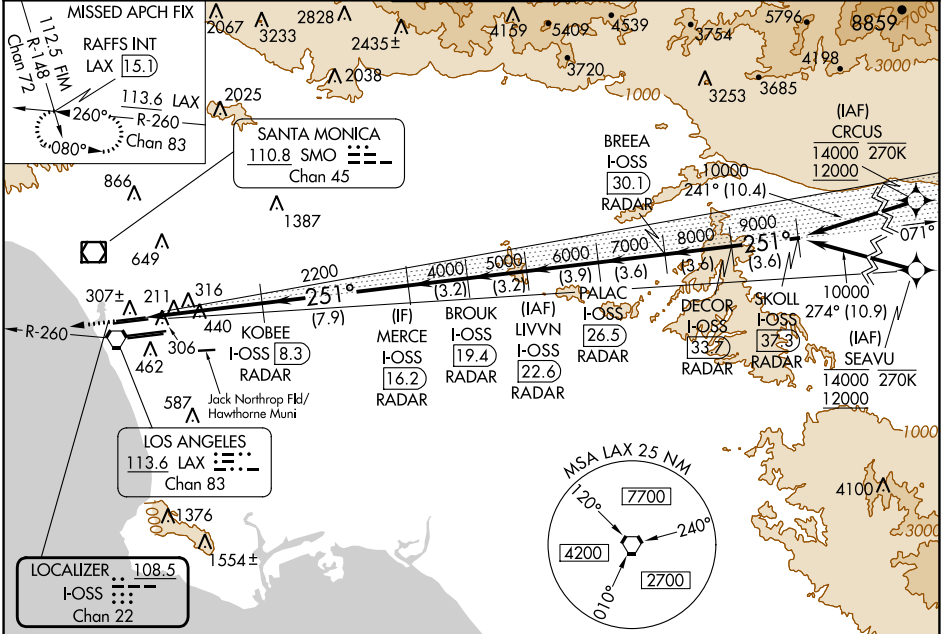
From CRCUS, SEAVU: RNAV 1-GPS required. DME or RADAR required.



MISSED APPROACH: Climb to 2000 on heading 251° and LAX VORTAC R-260 to RAFFS INT/LAX 15.1 DME and hold.

Simultaneous approach authorized with HHR.  
Simultaneous approach authorized.

|   |  |  |   |   |       |
|---|--|--|---|---|-------|
| D-ATIS<br>ARR <b>133.8</b><br>DEP <b>135.65</b> | SOCAL APP CON<br><b>124.3 363.2</b> (APCH FM WEST)<br><b>124.5 235.975</b> (225°-044°)<br><b>124.9 269.0</b> (090°-224°)<br><b>128.5 360.7</b> (045°-089°) | LOS ANGELES TOWER<br><b>N 133.9 239.3</b><br><b>S 120.95 379.1</b> | GND CON<br><b>N 121.65 327.0</b><br><b>S 121.75 327.0</b><br><b>W 121.4 327.0</b> | CLNC DEL<br><b>120.35</b><br><b>327.0</b> | CPDLC |
|---|--|--|---|---|-------|



SW-3, 11 JUL 2024 to 08 AUG 2024

SW-3, 11 JUL 2024 to 08 AUG 2024

|  |          |                       |           |                                       |   |                  |                  |                 |                 |                |        |
|--|----------|-----------------------|-----------|---------------------------------------|---|------------------|------------------|-----------------|-----------------|----------------|--------|
| ELEV 128   | TDZE 122 | 2000<br>↑<br>hdg 251° | LAX R-260 | RAFFS INT                             | VGSI and ILS glidepath not coincident (VGSI Angle 3.00/TCH 73). | DECOR I-OSS 33.7 | SKOLL I-OSS 37.3 |                 |                 |                |        |
|  |          |                       |           | KOBBE I-OSS 8.3                       | MERC I-OSS 16.2   | BROOK I-OSS 19.4 | LIVVN I-OSS 22.6 | PALC I-OSS 26.3 | BREA I-OSS 30.1 | RAFFS INT 25.1 | 10000  |
|  |          |                       |           | 2200                                  | 4000  | 5000             | 6000             | 7000            | 8000            | 9000           | 10000  |
|  |          |                       |           | 6.4 NM                                | 7.9 NM  | 3.2 NM           | 3.2 NM           | 3.9 NM          | 3.6 NM          | 3.6 NM         | 3.6 NM |
|  |          |                       |           | CATEGORY A                            | B   |                  | C                |                 | D               |                |        |
|  |          |                       |           | S-ILS 24R CAT II RA 118/12 100 DA 222 |   |                  |                  |                 |                 |                |        |
|  |          |                       |           | S-ILS 24R CAT III RVR 06              |   |                  |                  |                 |                 |                |        |
| <b>CATEGORY II &amp; III ILS - SPECIAL AIRCREW &amp; AIRCRAFT CERTIFICATION REQUIRED</b> |          |                       |           |                                       |   |                  |                  |                 |                 |                |        |

LOS ANGELES, CALIFORNIA  
Amdt 26B 20MAY21

33°57'N-118°24'W

LOS ANGELES INTL (LAX)  
**ILS RWY 24R (CAT II & III)**