

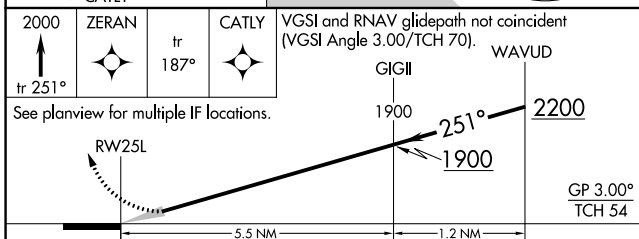
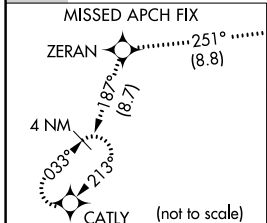
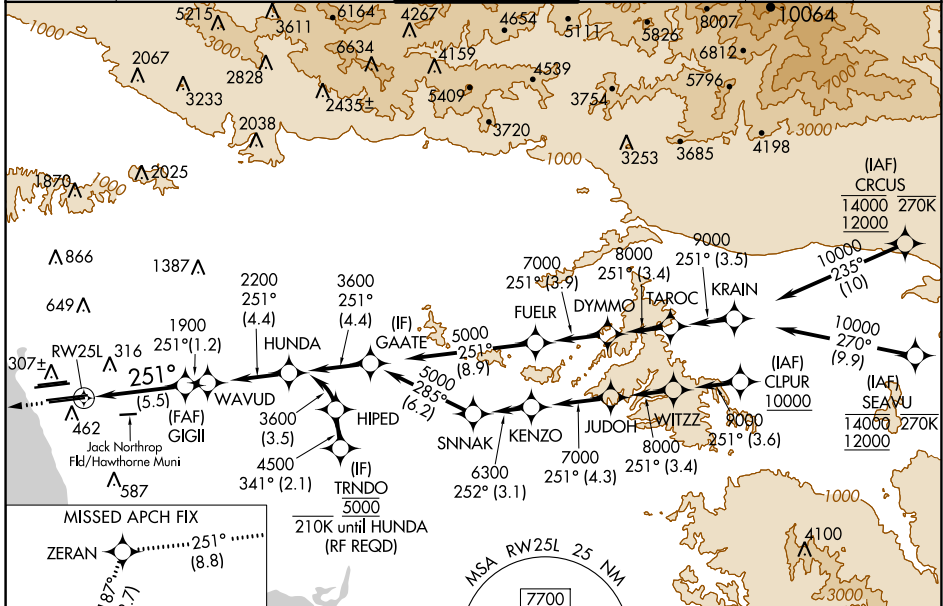
APP CRS	Rwy Idg	11095
251°	TDZE	104
	Apf Elev	128

RNAV (RNP) Z RWY 25L

LOS ANGELES INTL (LAX)

RNP AR APCH.	ALSF-2	MISSED APPROACH: Climb to 2000 on track 251° to ZERAN and on track 187° to CATLY and hold.
<p>GPS required. For uncompensated Baro-VNAV systems, procedure NA below 5°C or above 54°C. Simultaneous approach authorized. Simultaneous approach authorized with HHR.</p>		

D-ATIS	SOCL APP CON	LOS ANGELES TOWER	GND CON	CLNC DEL	CPDLC
ARR 133.8	124.3 363.2	N 133.9 239.3	N 121.65 327.0	120.35	
DEP 135.65	124.5 235.975	S 120.95 379.1	S 121.75 327.0	327.0	
	(225°-044°)	(090°-224°)			
		(045°-089°)			



CATEGORY	A	B	C	D
RNP 0.15 DA		445/30	341 (400-5%)	
RNP 0.30 DA		543/50	439 (500-1)	

AUTHORIZATION REQUIRED

ELEV 128	D TDZE 104
----------	-------------------

