


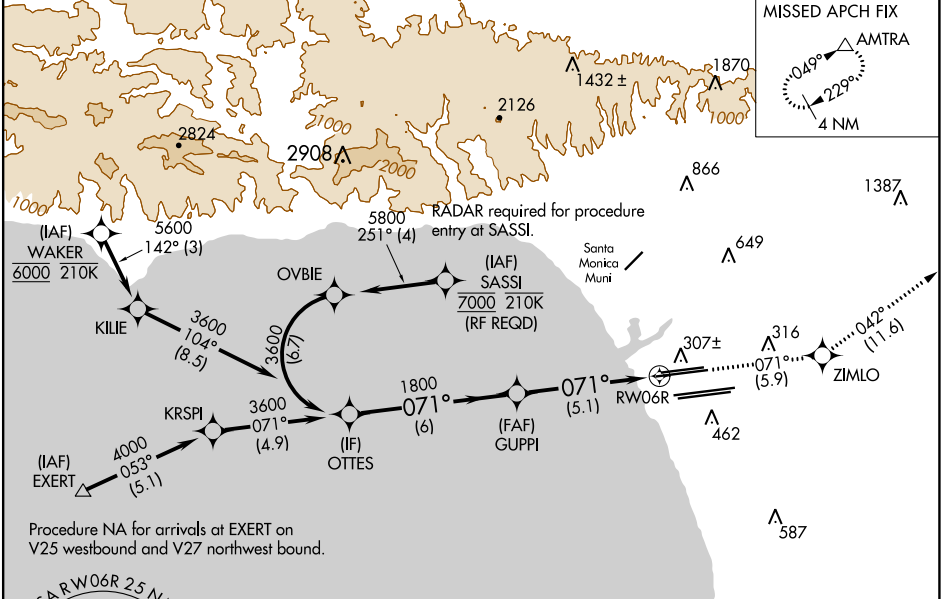
APP CRS	Rwy Idg	9748
071°	TDZE	116
	Apt Elev	128

RNAV (RNP) Z RWY 6R

LOS ANGELES INTL (LAX)

<p>▼ For uncompensated Baro-VNAV systems, procedure NA below 5°C (41°F) or above 54°C (130°F). GPS required. Simultaneous approach authorized. For inop ALS, increase RNP 0.30 all Cats visibility to RVR 6000.</p>	<p>MALSR</p> 	<p>MISSED APPROACH: Climb to 3000 on track 071° to ZIMLO and on track 042° to AMTRA and hold.</p>

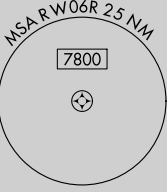
D-ATIS	SOCL APP CON	LOS ANGELES TOWER	GND CON	CLNC DEL	CPDLC
ARR 133.8	124.3 363.2 (APCH FM WEST)	124.9 269.0 (090°-224°)	N 121.65 327.0	120.35	
DEP 135.65	124.5 235.975 (225°-044°)	128.5 360.7 (045°-089°)	S 121.75 327.0	327.0	
		N 133.9 239.3	W 121.4 327.0		
		S 120.95 379.1			



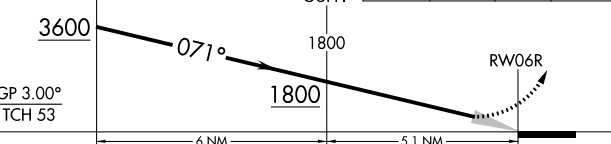
SW-3, 11 JUL 2024 to 08 AUG 2024

SW-3, 11 JUL 2024 to 08 AUG 2024

Procedure NA for arrivals at EXERT on V25 westbound and V27 northwest bound.



VGSI and RNAV glidepath not coincident (VGSI Angle 3.00/TCH 69).	3000	ZIMLO	AMTRA
OTTES	↑ tr 071°	✦ tr 042°	△



CATEGORY	A	B	C	D
RNP 0.30 DA		471/40	355 (400-¾)	

AUTHORIZATION REQUIRED

ELEV 128	D TDZE 116
----------	-------------------

Detailed diagram of the missed approach procedure. It shows a climb from 071 feet to 3000 feet, then a turn to 042 degrees to ZIMLO, and another turn to 042 degrees to AMTRA. Altitudes and distances are provided for each segment.