
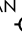



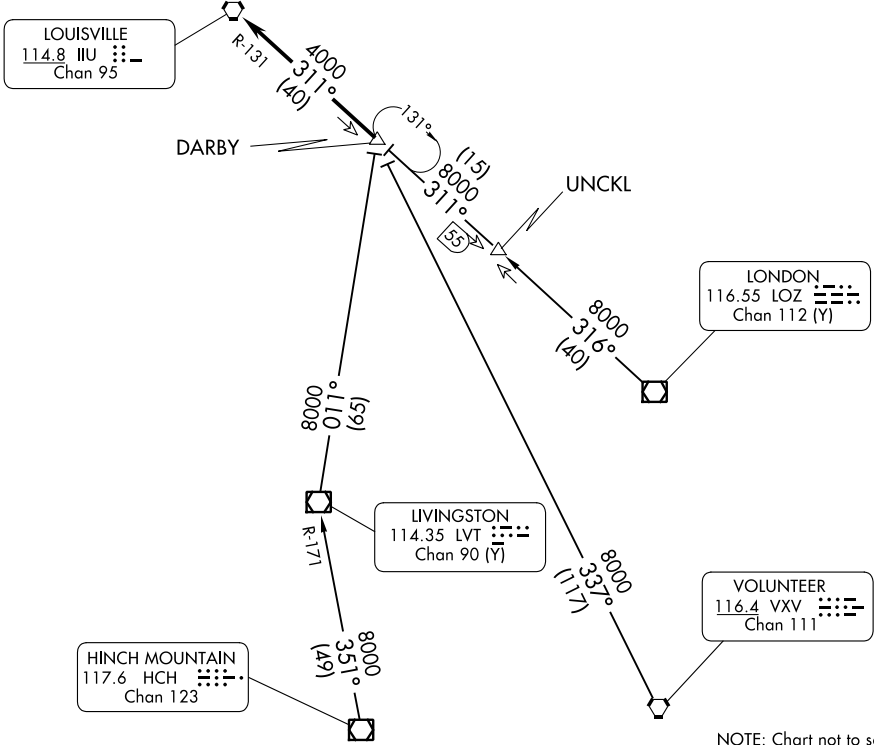
DARBY EIGHT ARRIVAL

LOUISVILLE, KENTUCKY

LOUISVILLE APP CON
 132.075 327.0
 LOU ATIS
 124.15
 SDF D-ATIS
 118.725

CLARK RGNL 
 BOWMAN FLD 
 LOUISVILLE MUHAMMAD ALI INTL 

NOTE: RADAR required.
 NOTE: DME required for LONDON and UNCKL transitions.



NOTE: Chart not to scale.

ARRIVAL ROUTE DESCRIPTION

HINCH MOUNTAIN TRANSITION (HCH.DARBY8): From over HCH VOR/DME on HCH R-351 and LVT R-171 to LVT VOR/DME, then on LVT R-011 to DARBY. Thence. . . .

LONDON TRANSITION (LOZ.DARBY8): From over LOZ VOR/DME on LOZ R-316 to UNCKL, then on IIU R-131 to DARBY. Thence. . . .

UNCKL TRANSITION (UNCKL.DARBY8): From over UNCKL on IIU R-131 to DARBY. Thence. . . .

VOLUNTEER TRANSITION (VXV.DARBY8): From over VXV VORTAC on VXV R-337 to DARBY. Thence. . . .

. . . . from DARBY on IIU R-131 to IIU VORTAC. Expect RADAR vectors to final course.

SE-1, 11 JUL 2024 to 08 AUG 2024

SE-1, 11 JUL 2024 to 08 AUG 2024

DARBY EIGHT ARRIVAL

LOUISVILLE, KENTUCKY