

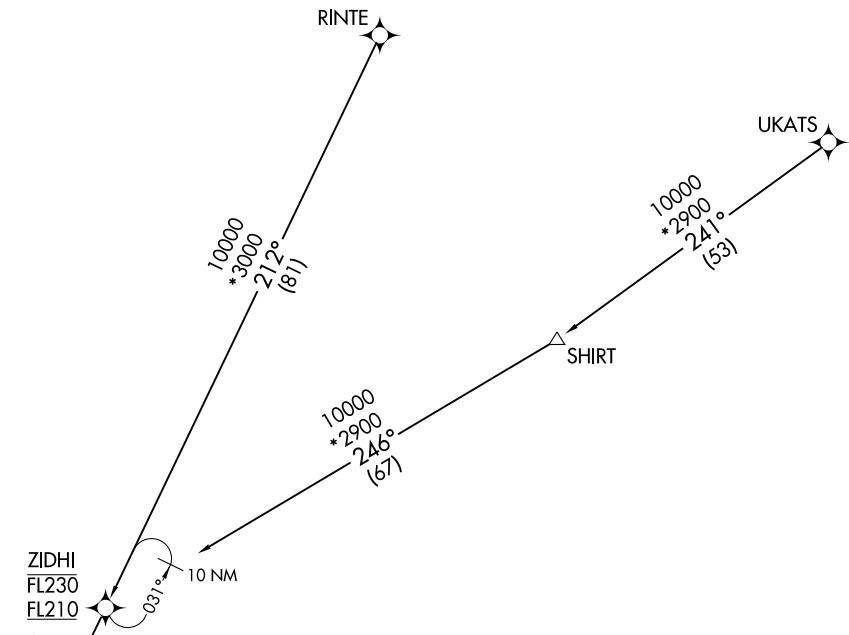
# DLAMP EIGHT ARRIVAL (RNAV) Transition Routes

LOUISVILLE APP CON  
132.075 327.0  
D-ATIS  
118.725

RNAV 1 - DME/DME/IRU or GPS.  
RADAR required.

SE-1, 11 JUL 2024 to 08 AUG 2024

SE-1, 11 JUL 2024 to 08 AUG 2024



- NOTE: Jet aircraft only.
- NOTE: KSDf Landing North select Rwy 35R Transition. Expect runway assignment from Louisville APP CON prior to ANCHR.
- NOTE: KSDf Landing South select Rwy 17L Transition. Expect runway assignment from Louisville APP CON prior to ANCHR.

ANCHR  
FL200 280K  
17000

See following page for Arrival Routes.

RINTE TRANSITION (RINTE.DLAMP8):  
UKATS TRANSITION (UKATS.DLAMP8):

NOTE: Chart not to scale.

(CONTINUED ON FOLLOWING PAGE)