

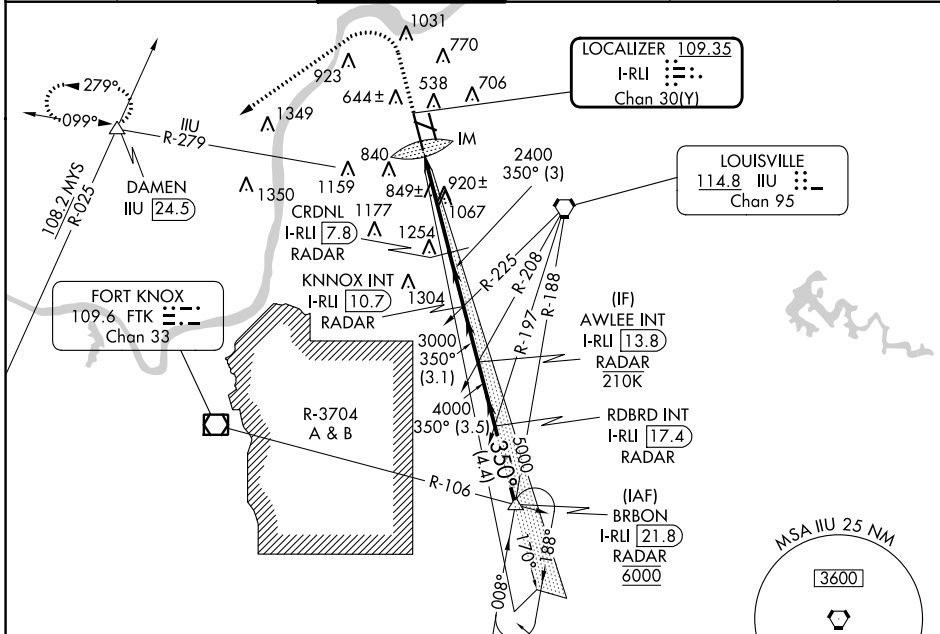
LOC/DME I-RLI 109.35	APP CRS 350°	Rwy Idg TDZE Apt Elev	10000 464 501
Chan 30(Y)			

ILS RWY 35L (CAT II & III)

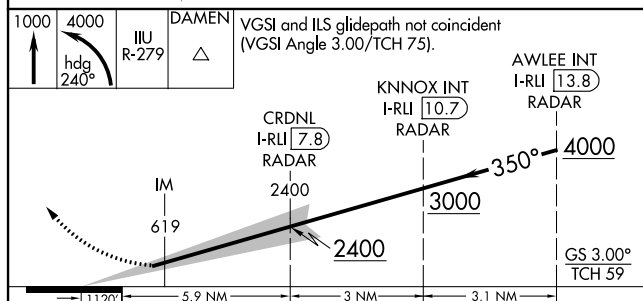
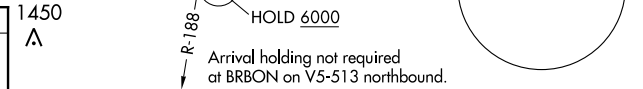
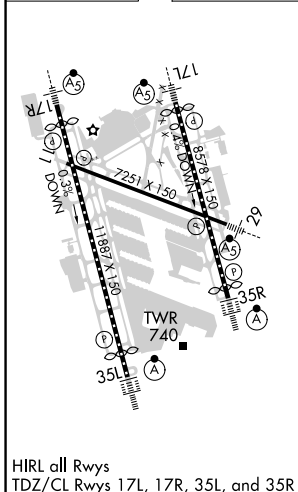
LOUISVILLE MUHAMMAD ALI INTL (SDF')

RADAR required.	ALSF-2 	MISSED APPROACH: Climb to 1000 then climbing left turn to 4000 on heading 240° and IIL VORTAC R-279 to DAMEN INT/ IIL 24.5 DME and hold.
<p>Simultaneous approach authorized. CAT II: RVR 1000 authorized with specific OPSPEC, MSPEC, or LOA approval and use of autoland or HUD to touchdown.</p>		

D-ATIS 118.725	LOUISVILLE APP CON 132.075 327.0	LOUISVILLE TOWER 124.2 257.8	GND CON 121.7 348.6	CLNC DEL 126.1 275.8	CPDLC
--------------------------	--	--	-------------------------------	--------------------------------	-------



ELEV 501	D	TDZE 464
----------	----------	----------



CATEGORY	A	B	C	D
S-ILS 35L	CAT II RA 99/12 100 DA 564			
S-ILS 35L	CAT III RVR 600			

CATEGORY II & III ILS - SPECIAL AIRCREW & AIRCRAFT CERTIFICATION REQUIRED

SE-1, 11 JUL 2024 to 08 AUG 2024

SE-1, 11 JUL 2024 to 08 AUG 2024