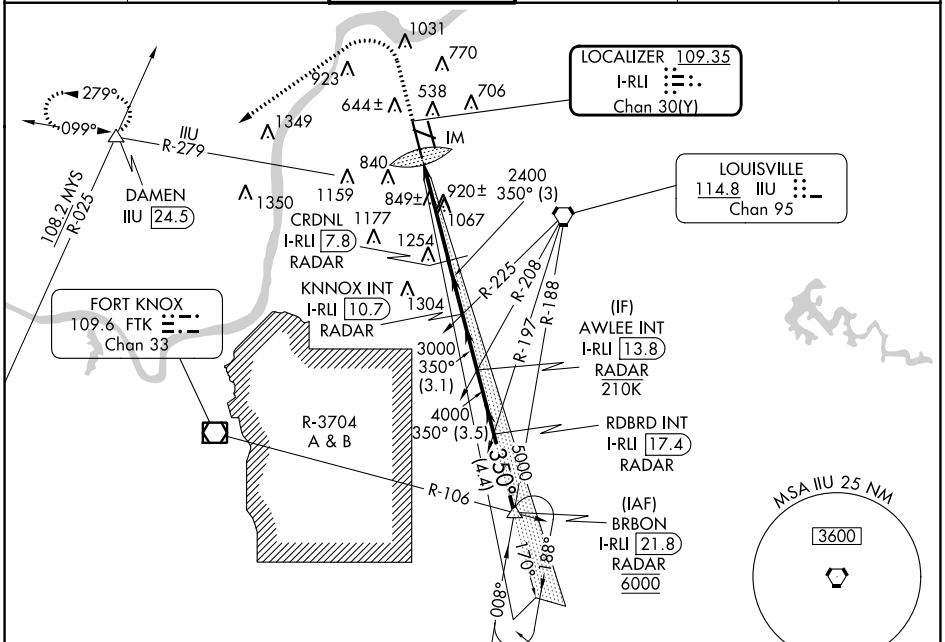


LOC/DME I-RLI <b>109.35</b>	APP CRS <b>350°</b>	Rwy Idg TDZE Apt Elev	<b>10000</b> <b>464</b> <b>501</b>
Chan <b>30(Y)</b>			

# ILS RWY 35L (SA CAT I)

LOUISVILLE MUHAMMAD ALI INTL (SDF)

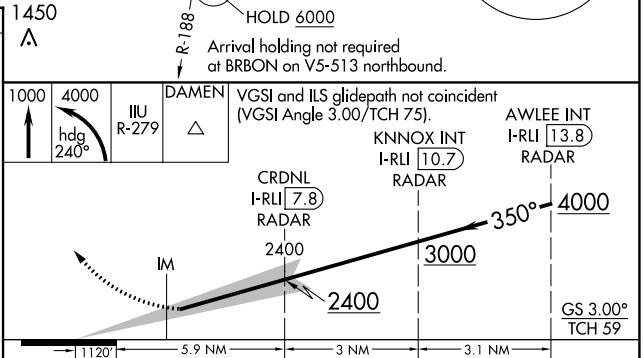
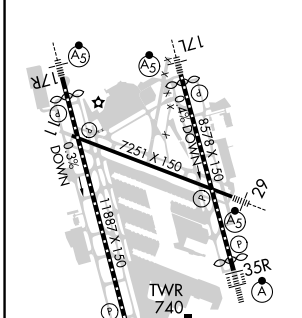
RADAR required.				ALSF-2	MISSED APPROACH: Climb to 1000 then climbing left turn to 4000 on heading 240° and IJU VORTAC R-279 to DAMEN INT/ IJU 24.5 DME and hold.
Simultaneous approach authorized. Requires specific OPSPEC, MSPEC, or LOA approval.					
D-ATIS <b>118.725</b>	LOUISVILLE APP CON <b>132.075 327.0</b>	LOUISVILLE TOWER <b>124.2 257.8</b>	GND CON <b>121.7 348.6</b>	CLNC DEL <b>126.1 275.8</b>	CPDLC



SE-1, 11 JUL 2024 to 08 AUG 2024

SE-1, 11 JUL 2024 to 08 AUG 2024

ELEV <b>501</b>	<b>D</b>	TDZE <b>464</b>
-----------------	----------	-----------------



CATEGORY	A	B	C	D
S-ILS 35L	RA 154/14 150 DA 614			

## SA CATEGORY I ILS - SPECIAL AIRCREW & AIRCRAFT CERTIFICATION REQUIRED

# ILS RWY 35L (SA CAT I)