

LOC/DME I-JJM 110.55 Chan 42 (Y)	APP CRS 350°	Rwy Idg TDZE Apt Elev	7800 479 501
--	------------------------	-----------------------------	---

ILS or LOC RWY 35R

LOUISVILLE MUHAMMAD ALI INTL (SDF)

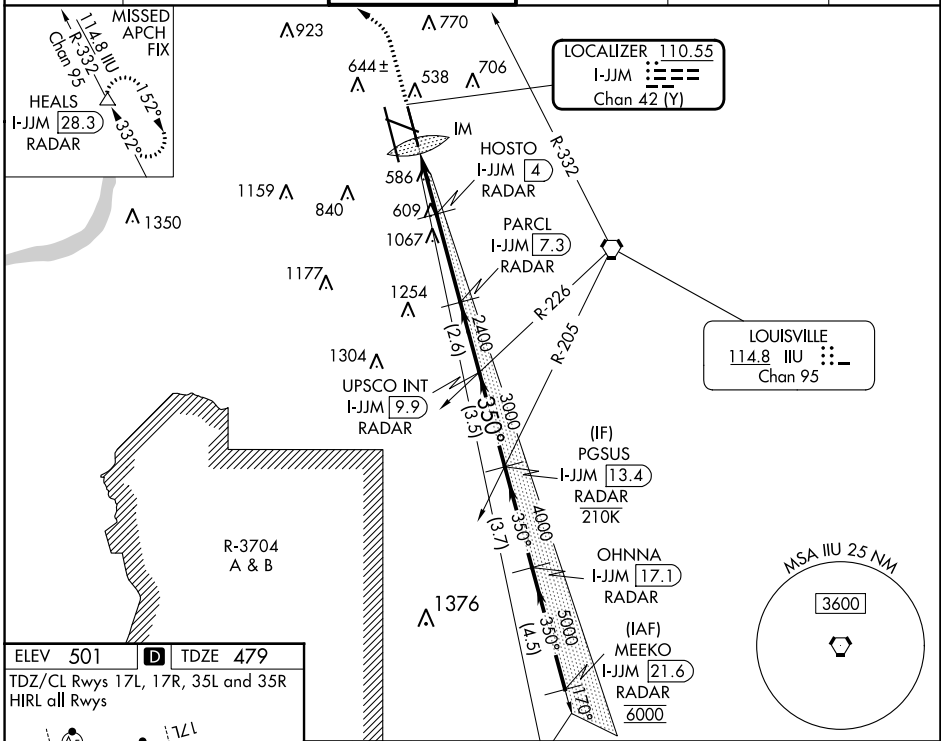
DME or RADAR required for LOC only.

Simultaneous approach authorized. Circling Rwy 11 NA at night.
For inop ALS, increase LOC Cat C/D to 5000 RVR.

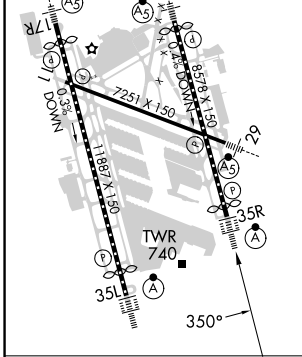
ALSF-2

MISSED APPROACH: Climb to 2500 then climbing left turn to 4000 on heading 350° and on IIL VORTAC R-332 to HEALS/28.3 DME/RADAR and hold.

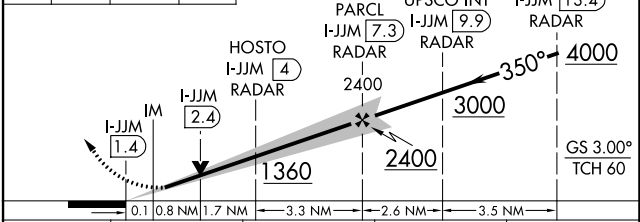
D-ATIS 118.725	LOUISVILLE APP CON 132.075 327.0	LOUISVILLE TOWER 124.2 257.8	GND CON 121.7 348.6	CLNC DEL 126.1 275.8	CPDLC
--------------------------	--	--	-------------------------------	--------------------------------	-------



ELEV 501	TDZE 479
TDZ/CL Rwy 17L, 17R, 35L and 35R	
HIRL all Rwy	



2500	4000	HEALS	VGSI and ILS glidepath not coincident (VGSI Angle 3.00/TCH 72).
↑	hdg 350°	IIL R-332	△



CATEGORY	A	B	C	D
S-ILS 35R	679/18 200 (200-½)			
S-LOC 35R	840/24	361 (400-½)	840/35	361 (400-¾)
ⓐ CIRCLING	1040-1 539 (600-1)	1140-1 639 (700-1)	1160-1¾ 659 (700-1¾)	1400-3 899 (900-3)

SE-1, 11 JUL 2024 to 08 AUG 2024

SE-1, 11 JUL 2024 to 08 AUG 2024