

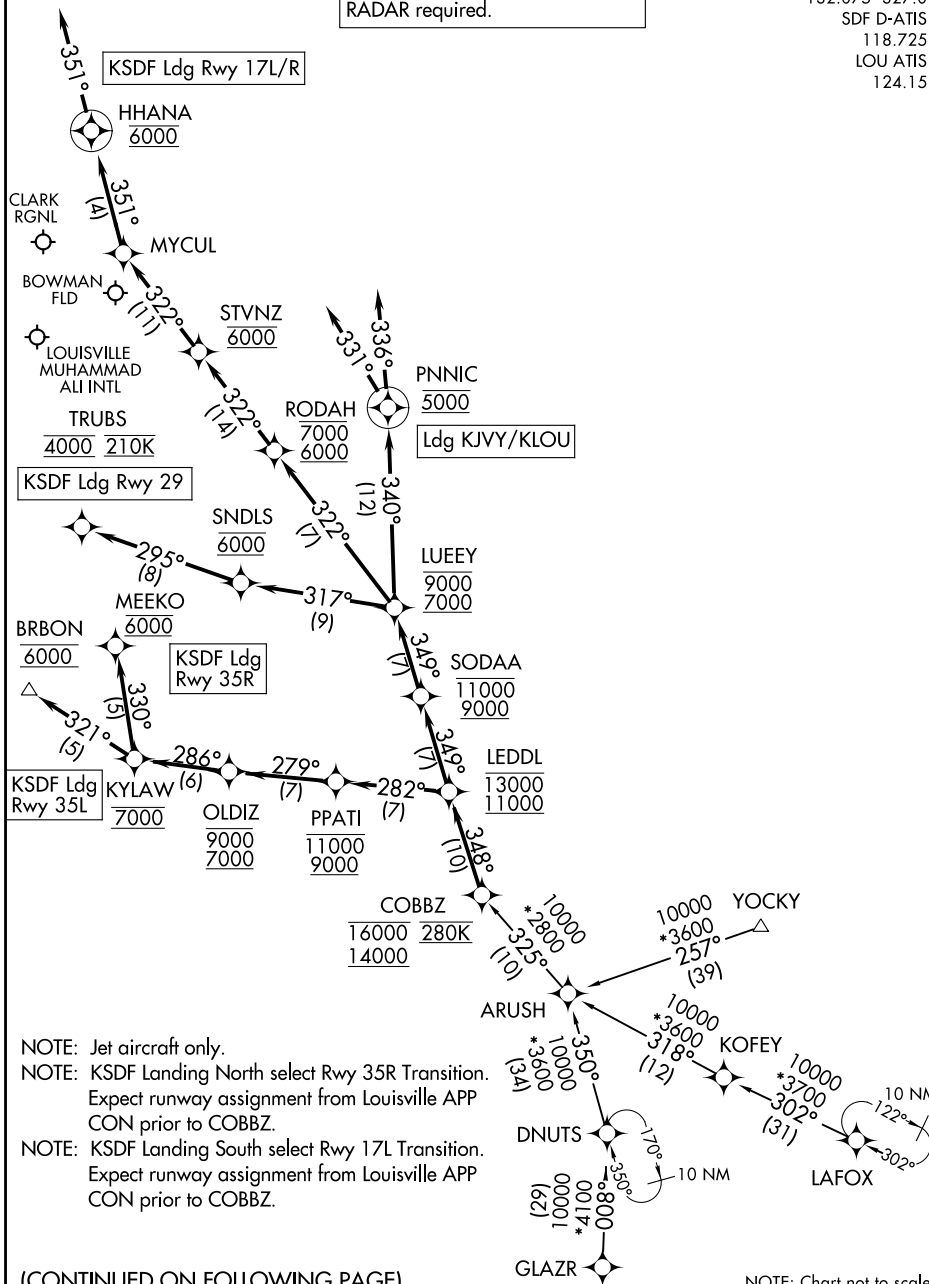
LEDDL ONE ARRIVAL (RNAV)

LOUISVILLE, KENTUCKY

RNAV 1 - DME/DME/IRU or GPS.

RADAR required.

LOUISVILLE APP CON
132.075 327.0
SDF D-ATIS
118.725
LOU ATIS
124.15



SE-1, 11 JUL 2024 to 08 AUG 2024

SE-1, 11 JUL 2024 to 08 AUG 2024

NOTE: Jet aircraft only.
 NOTE: KSDF Landing North select Rwy 35R Transition. Expect runway assignment from Louisville APP CON prior to COBBZ.
 NOTE: KSDF Landing South select Rwy 17L Transition. Expect runway assignment from Louisville APP CON prior to COBBZ.

(CONTINUED ON FOLLOWING PAGE)

NOTE: Chart not to scale.

LEDDL ONE ARRIVAL (RNAV)

LOUISVILLE, KENTUCKY