

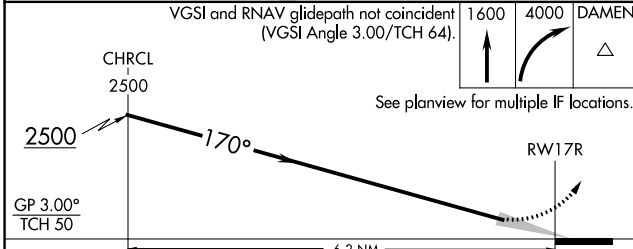
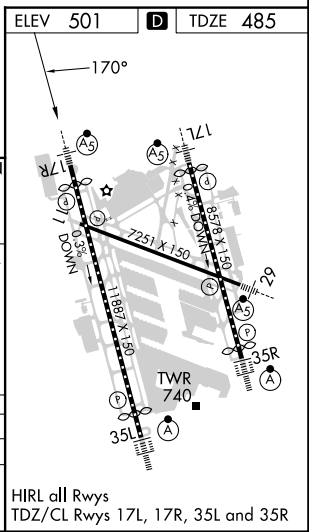
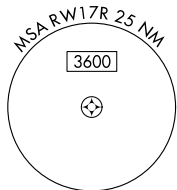
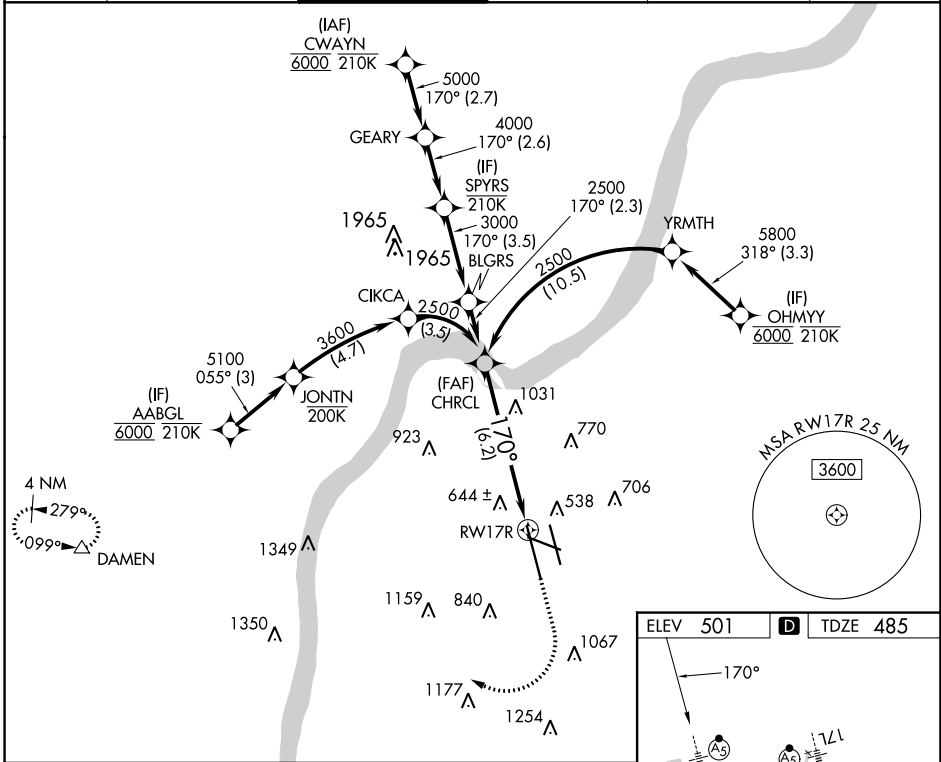
APP CRS	Rwy Idg <b>10000</b>
<b>170°</b>	TDZE <b>485</b>
	Apt Elev <b>501</b>

# RNAV (RNP) Z RWY 17R

LOUISVILLE MUHAMMAD ALI INTL (SDF)

RNP AR APCH - GPS.		MALSR	MISSED APPROACH: Climb to 1600 then climbing right turn to 4000 direct DAMEN and hold.
<p>▼ For uncompensated Baro-VNAV systems, procedure NA below -13°C or above 54°C. Simultaneous approach authorized. For inop ALS, increase RNP 0.30 visibility all Cats to 1½ SM.</p>			

D-ATIS <b>118.725</b>	LOUISVILLE APP CON <b>132.075 327.0</b>	LOUISVILLE TOWER <b>124.2 257.8</b>	GND CON <b>121.7 348.6</b>	CLNC DEL <b>126.1 275.8</b>	CPDLC
--------------------------	--	--	-------------------------------	--------------------------------	-------



CATEGORY	A	B	C	D
RNP 0.30 DA	974/50		489 (500-1)	

**AUTHORIZATION REQUIRED**

HIRL all Rwys  
TDZ/CL Rwys 17L, 17R, 35L and 35R

SE-1, 11 JUL 2024 to 08 AUG 2024

SE-1, 11 JUL 2024 to 08 AUG 2024