

# RNAV (RNP) Z RWY 35R

LOUISVILLE MUHAMMAD ALI INTL (SDF)

APP CRS	Rwy Idg	<b>7800</b>
<b>350°</b>	TDZE	<b>479</b>
	Apt Elev	<b>501</b>

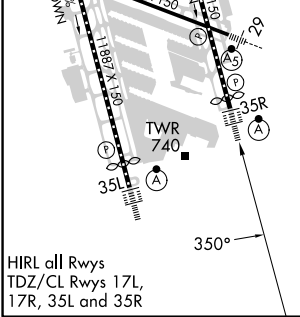
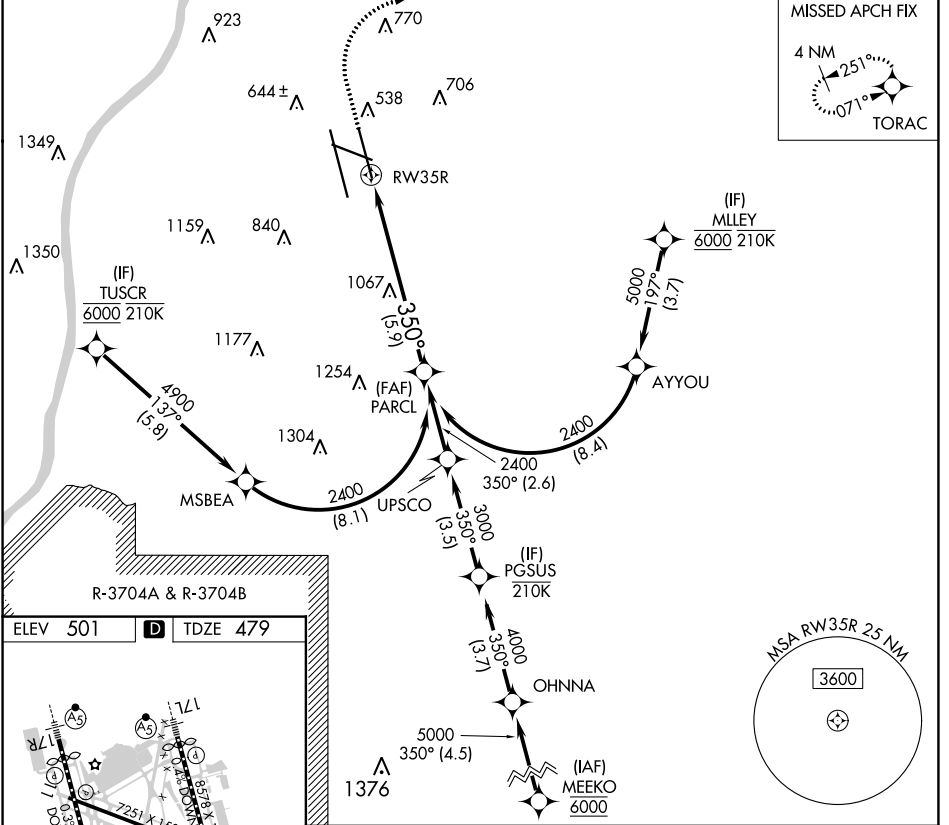
RNP AR APCH - GPS.

▼ For uncompensated Baro-VNAV systems, procedure NA below -13°C or above 54°C. For inop ALS, increase RNP 0.12 all Cats visibility to RVR 4500. Simultaneous approach authorized.

ALSF-2

MISSED APPROACH: Climb to 1600 then climbing right turn to 4000 direct TORAC and hold.

D-ATIS	LOUISVILLE APP CON	LOUISVILLE TOWER	GND CON	CLNC DEL	CPDLC
<b>118.725</b>	<b>132.075 327.0</b>	<b>124.2 257.8</b>	<b>121.7 348.6</b>	<b>126.1 275.8</b>	



1600 4000 TORAC

VGSI and RNAV glidepath not coincident (VGSI Angle 3.00/TCH 72). See planview for multiple IF locations.

PARCL 2400

RW35R 350°

5.9 NM

GP 3.00° TCH 60

CATEGORY	A	B	C	D
RNP 0.12 DA		792/24	313 (300-1/2)	
RNP 0.30 DA		892/40	413 (400-3/4)	

**AUTHORIZATION REQUIRED**

SE-1, 11 JUL 2024 to 08 AUG 2024

SE-1, 11 JUL 2024 to 08 AUG 2024