


WAAS CH 90101 W17B	APP CRS 170°	Rwy Idg TDZE 499 Apt Elev 501	7800
--	------------------------	---	-------------

RNAV (GPS) Y RWY 17L

LOUISVILLE MUHAMMAD ALI INTL (SDF)

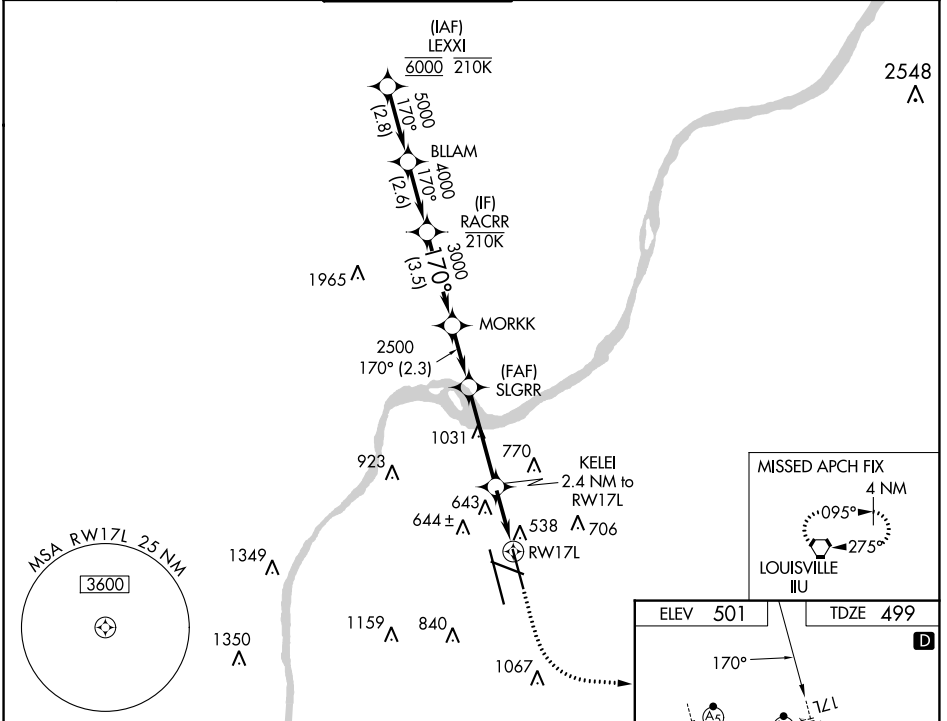
RNP APCH - GPS.

Simultaneous approach authorized. Circling Rwy 11 NA at night. For uncompensated Baro-VNAV systems, LNAV/VNAV NA below -13°C or above 54°C. LNAV procedure NA during simultaneous operations. Use of FD or AP required during simultaneous operations. For inop ALS, increase LNAV/VNAV all Cats visibility to RVR 6000.

MALSRS 

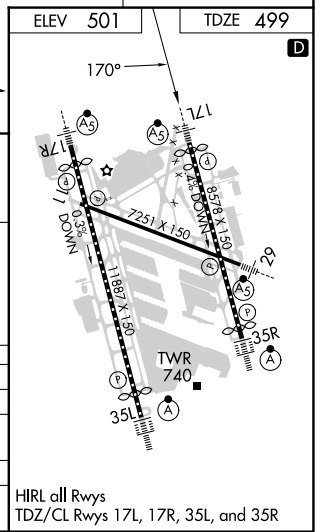
MISSED APPROACH: Climb to 1000 then climbing left turn to 3000 direct ILL VORTAC and hold, continue climb-in-hold to 3000.

D-ATIS 118.725	LOUISVILLE APP CON 132.075 327.0	LOUISVILLE TOWER 124.2 257.8	GND CON 121.7 348.6	CLNC DEL 126.1 275.8	CPDLC
--------------------------	--	--	-------------------------------	--------------------------------	-------



VGSI and RNAV glidepath not coincident (VGSI Angle 3.32/TCH 71).

	RACRR	MORKK	SLGRR	KELEI	1000	3000	ILL
	4000	3000	2500	2.4 NM to RW17L	↑	↷	⬠
	GP 3.00° TCH 55	170°	170°	170°			
	3.5 NM	2.3 NM	3.7 NM	1.4 NM	1 NM		
CATEGORY	A	B	C	D			
LPV DA		699/18	200 (200-½)				
LNAV/VNAV DA		909/40	410 (500-¾)				
LNAV MDA	920/24	421 (500-½)	920/40	421 (500-¾)			
CIRCLING	1040-1 539 (600-1)	1140-1 639 (700-1)	1160-1¾ 659 (700-1¾)	1400-3 899 (900-3)			



SE-1, 11 JUL 2024 to 08 AUG 2024

SE-1, 11 JUL 2024 to 08 AUG 2024