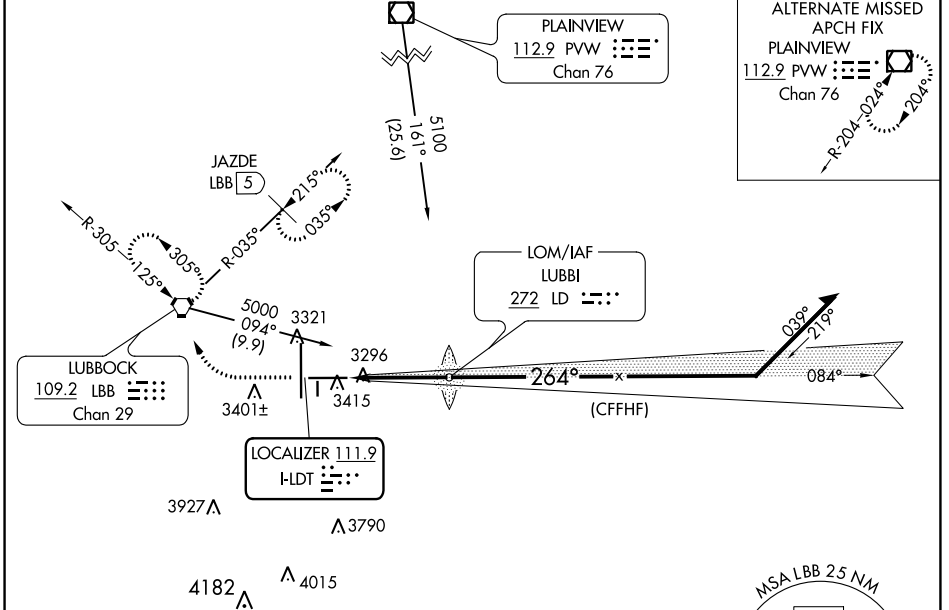


LOC IDLT <b>111.9</b>	APP CRS <b>264°</b>	Rwy Idg <b>8003</b>
		TDZE <b>3255</b>
		Apt Elev <b>3282</b>

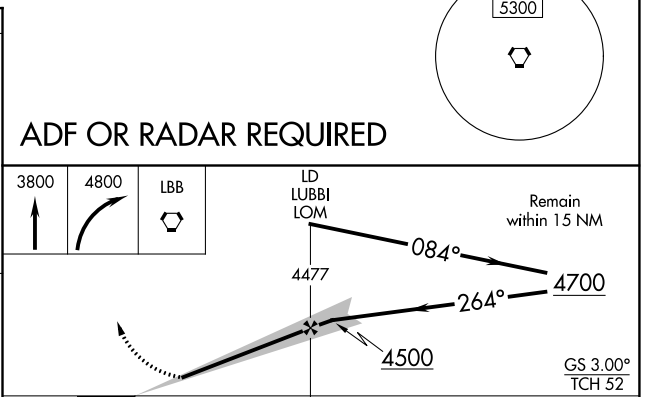
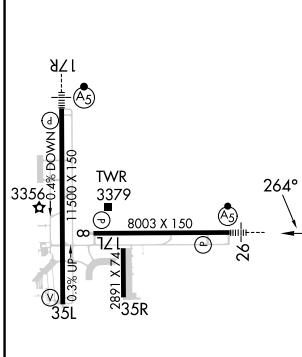
# ILS or LOC RWY 26

LUBBOCK PRESTON SMITH INTL (LBB)

<p><b>▽</b> For inop MALSR, increase S-ILS 26 Cat E visibility to RVR 4000 and increase S-LOC 26 Cat C/D/E visibility to RVR 4500. <b>▲</b> #RVR 1800 authorized with use of FD or AP or HUD to DA.</p>	<p>MALSR</p>	<p>MISSED APPROACH: Climb to 3800 then climbing right turn to 4800 direct LBB VORTAC and hold (TACAN aircraft climb to 3800 then climbing right turn to 5100 on heading 300° and on LBB VORTAC R-035 to JAZDE/LBB 5 DME and hold northeast left turn 215° inbound).</p>		
<p>ATIS <b>125.3 270.275</b></p>	<p>LUBBOCK APP CON <b>119.2 351.8</b></p>	<p>LUBBOCK TOWER <b>120.5 239.3</b></p>	<p>GND CON <b>121.9 348.6</b></p>	<p>CLNC DEL <b>125.8 281.55</b></p>



ELEV 3282	<b>D</b>	TDZE 3255
-----------	----------	-----------



<p>REIL Rwy 8</p> <p>HIRL Rws 8-26 and 17R-35L</p> <p>FAF to MAP 3.7 NM</p>	<p>CATEGORY</p> <p>S-ILS 26</p> <p>S-LOC 26</p>	<p>A</p> <p>B</p> <p>C</p> <p>D</p> <p>E</p>	<p>#3455/24</p> <p>200 (200-½)</p> <p>3560/24</p> <p>305 (300-½)</p>	<p>3720-1</p> <p>438 (500-1)</p>	<p>3740-1</p> <p>458 (500-1)</p>	<p>3880-1½</p> <p>598 (600-1½)</p>	<p>3940-2</p> <p>658 (700-2)</p>	<p>4100-3</p> <p>818 (900-3)</p>
---	---	--	--	----------------------------------	----------------------------------	------------------------------------	----------------------------------	----------------------------------

SC-2, 11 JUL 2024 to 08 AUG 2024

SC-2, 11 JUL 2024 to 08 AUG 2024