

APP CRS 354°	Rwy Idg TDZE Apt Elev	11500 3254 3282
------------------------	-----------------------------	--

RNAV (RNP) Z RWY 35L

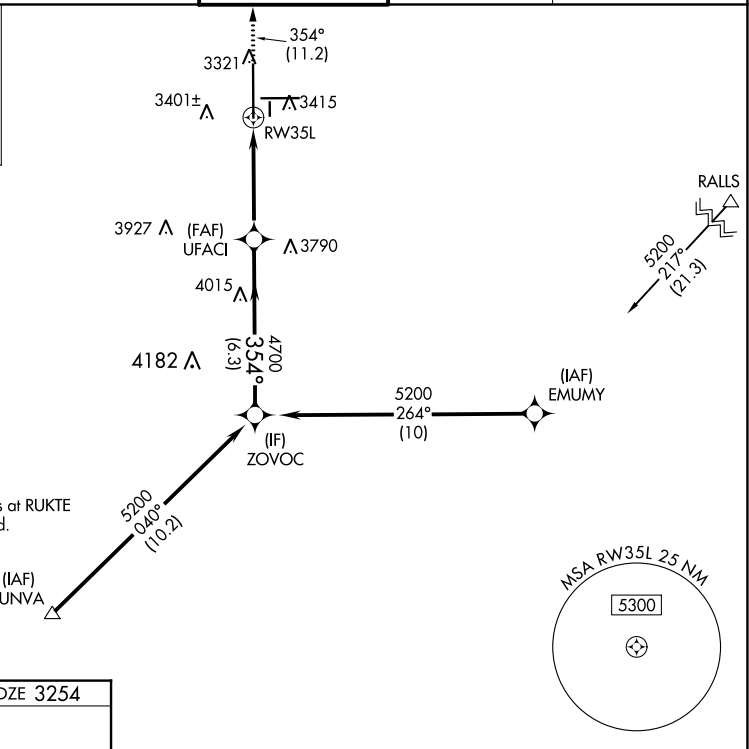
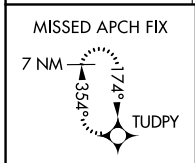
LUBBOCK PRESTON SMITH INTL (LBB)

RNP AR APCH.

▼ For uncompensated Baro-VNAV systems, procedure NA below -12° C or above 51° C.

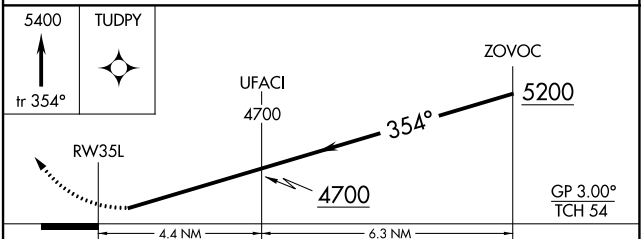
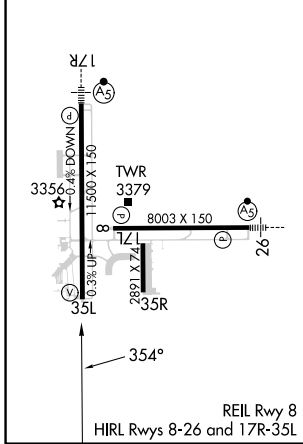
MISSED APPROACH: Climb to 5400 on track 354° to TUDPY and hold.

ATIS 125.3 270.275	LUBBOCK APP CON 119.2 351.8	LUBBOCK TOWER 120.5 239.3	GND CON 121.9 348.6	CLNC DEL 125.8 281.55
------------------------------	---------------------------------------	-------------------------------------	-------------------------------	---------------------------------



Procedure NA for arrivals at RUKTE on V102 southwest bound.

ELEV 3282	D	TDZE 3254
-----------	----------	-----------



CATEGORY	A	B	C	D
RNP 0.18 DA		3559-7/8	305 (300-7%)	
RNP 0.30 DA		3620-1/8	366 (400-1%)	

AUTHORIZATION REQUIRED

SC-2, 11 JUL 2024 to 08 AUG 2024

SC-2, 11 JUL 2024 to 08 AUG 2024