

MARIANNA, FLORIDA

AL-248 (FAA)

23166

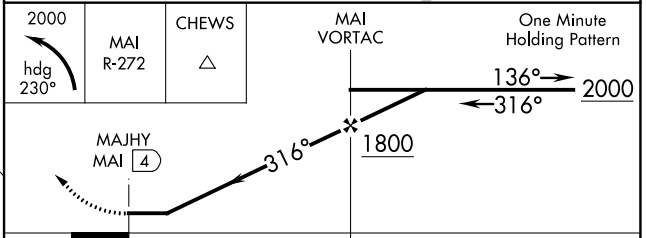
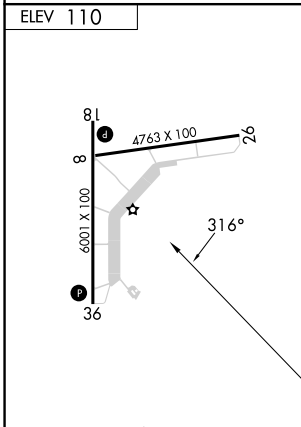
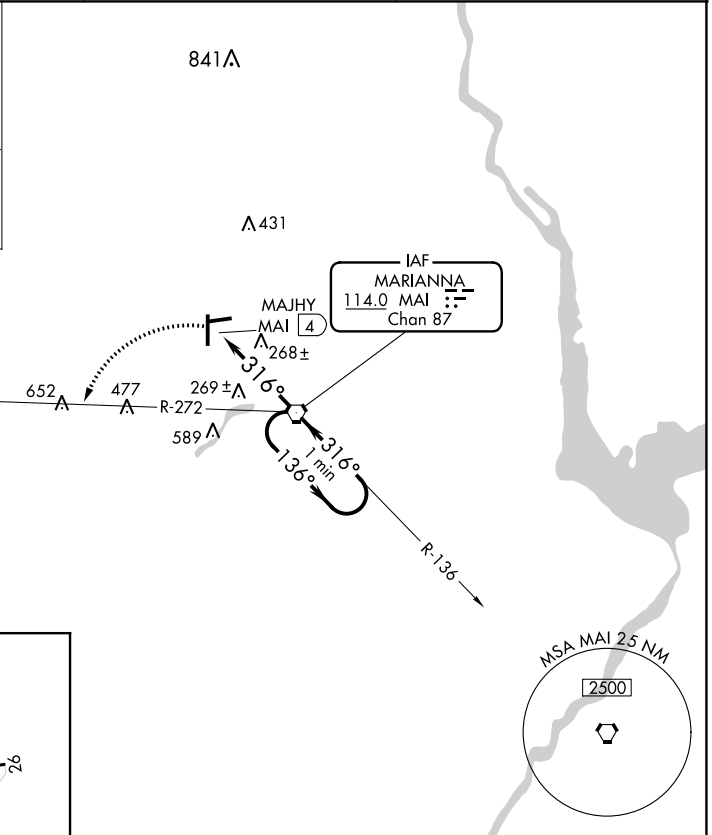
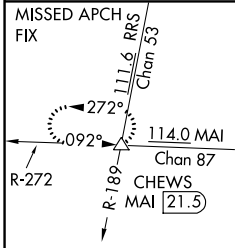
| | | |
|--|------------------------|--|
| VORTAC MAI 114.0 Chan 87 | APP CRS 316° | Rwy Ldg TDZE N/A Apt Elev 110 |
|--|------------------------|--|

VOR-A
MARIANNA MUNI (MAI)

⚠ Helicopter visibility reduction below 1 SM NA. When local altimeter setting not received, use Bainbridge altimeter setting; Increase all MDA 80 feet and Circling Cat D visibility ¼ SM. Circling Rwy 26 NA at night.

MISSED APPROACH: Climbing left turn to 2000 via heading 230° and MAI R-272 to CHEWS INT/MAI 21.5 DME and hold.

| | | |
|------------------------|--|---------------------------------|
| ASOS 133.525 | CAIRNS APP CON ★ 133.75 270.35 | UNICOM 123.0 (CTAF) 0 |
|------------------------|--|---------------------------------|



MIRL Rwy 18-36

| | | | | | |
|-----------------|------|------|------|------|------|
| FAF to MAP 4 NM | | | | | |
| Knots | 60 | 90 | 120 | 150 | 180 |
| Min:Sec | 4:00 | 2:40 | 2:00 | 1:36 | 1:20 |

| | | | | |
|-----------------|-------|-------------|------------------------|------------------------|
| CATEGORY | A | B | C | D |
| CIRCLING | 620-1 | 510 (600-1) | 620-1½ 510 (600-1½) | 900-2½ 790 (800-2½) |

MARIANNA, FLORIDA
Amdt 12B 23APR20

30°50'N-85°11'W

MARIANNA MUNI (MAI)
VOR-A

SE-3, 11 JUL 2024 to 08 AUG 2024

SE-3, 11 JUL 2024 to 08 AUG 2024