

LOC I-EXW 108.3	APP CRS 259°	Rwy Idg TDZE Apt Elev 7815 548 565	ILS or LOC RWY 26	
			EASTERN WV RGNL/SHEPHERD FLD (MRB)	

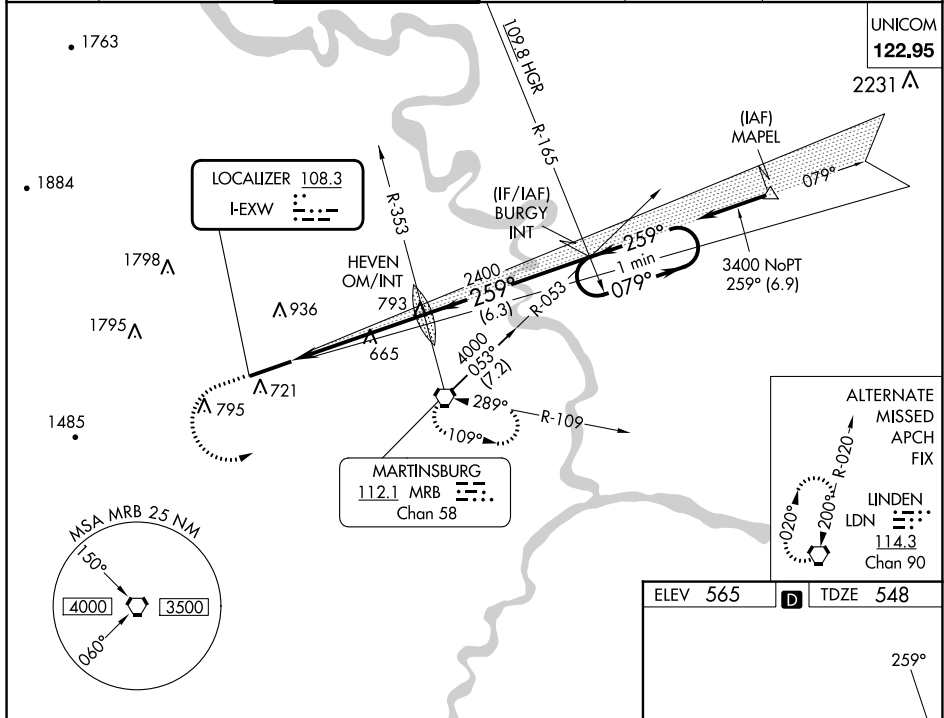
⚠ For inoperative MALSR, increase S-ILS 26 Cat E visibility to ¾ mile and S-LOC 26 Cat E visibility to 1¼ mile. When local altimeter setting not received, use Hagerstown altimeter setting and increase all DA 70 feet and all MDA 80 feet; increase S-LOC 26 Cat C, D, E and Circling Cat C and D visibility ¼ mile. For inoperative MALSR when using Hagerstown altimeter setting increase S-ILS 26 visibility all Cats to 1 mile and S-LOC 26 Cat E visibility to 1½ mile.

MALSR



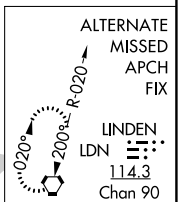
MISSED APPROACH: Climb to 1100 then climbing left turn to 3300 direct MRB VORTAC and hold, continue climb-in-hold to 3300.

ASOS 119.925	POTOMAC APP CON 126.825 239.025	MARTINSBURG TOWER ★ 124.3 (CTAF) 233.7	GND CON 121.8 257.65	CLNC DEL 121.8 257.65	CLNC DEL 132.075 269.075 (When twr closed)
------------------------	---	---	--------------------------------	---------------------------------	---



UNICOM
122.95

2231 **⚠**



ELEV 565 **D** TDZE 548

TWR

8815 X 150

622

259°

079°

One Minute Holding Pattern

GS 3.00°
TCH 52

REIL Rwy 8 **Ⓛ**
HIRL Rwy 8-26 **Ⓛ**

FAF to MAP 5.3 NM

Knots	60	90	120	150	180
Min:Sec	5:18	3:32	2:39	2:07	1:46

1100	3300	MRB	HEVEN OM/INT	BURGY INT	One Minute Holding Pattern
			2310	2400	079° → 3400
			5.3 NM	6.3 NM	259° ← 259°
CATEGORY	A	B	C	D	E
S-ILS 26	748-½ 200 (200-½)				
S-LOC 26	920-½ 372 (400-½)		920-¾ 372 (400-¾)		
C CIRCLING	1100-1 535 (600-1)	1240-1 675 (700-1)	1240-2 675 (700-2)	1260-2¼ 695 (700-2¼)	2140-3 1575 (1600-3)

NE-4, 11 JUL 2024 to 08 AUG 2024

NE-4, 11 JUL 2024 to 08 AUG 2024