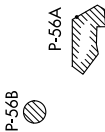


**TOP ALTITUDE:**  
 3000



TAKEOFF MINIMUMS  
 Rwy 8: Standard.  
 Rwy 26: Standard with a minimum  
 climb of 225' per NM to 2100.

NOTE: RNAV 1.  
 NOTE: RADAR required.  
 NOTE: DME/DME/IRU or GPS required.  
 NOTE: Turbo-jets only.  
 NOTE: Takeoff Rwy 8, if issued an ATC heading that  
 requires a westbound turn, climb heading 081°  
 to 1200 prior to turning for obstacle avoidance.  
 NOTE: Takeoff Rwy 26, if issued an ATC heading that  
 requires a right turn, climb heading 261° to  
 2400 prior to turning for obstacle avoidance.

NOTE: Chart not to scale.

NE-4, 11 JUL 2024 to 08 AUG 2024

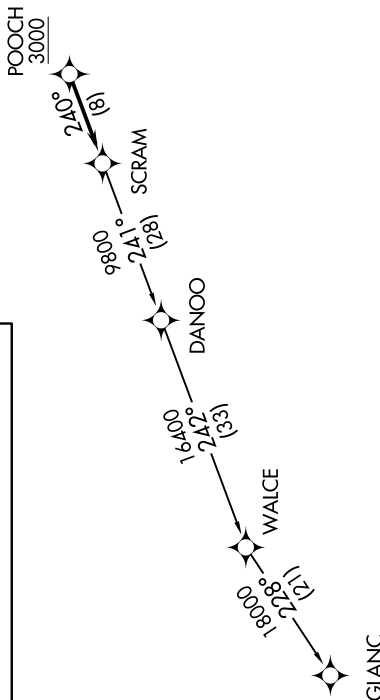
ASOS 119.925  
 CLNC DEL  
 121.8 257.65  
 132.075 269.075 (When Tower Closed)  
 GND CON  
 121.8 257.65  
 MARTINSBURG TOWER ★  
 124.3 (CTAF) 233.7  
 POTOMAC DEP CON  
 126.825 239.025

**DEPARTURE ROUTE DESCRIPTION**

Climb on heading assigned by ATC, expect RADAR  
 vectors to POOCH, then on track 240° to SCRAM,  
 thence . . . .

. . . . as depicted. Maintain 3000, expect  
 clearance to filed altitude within ten (10) minutes  
 after departure.

GLANC TRANSITION (SCRAM6.GLANC):



NE-4, 11 JUL 2024 to 08 AUG 2024