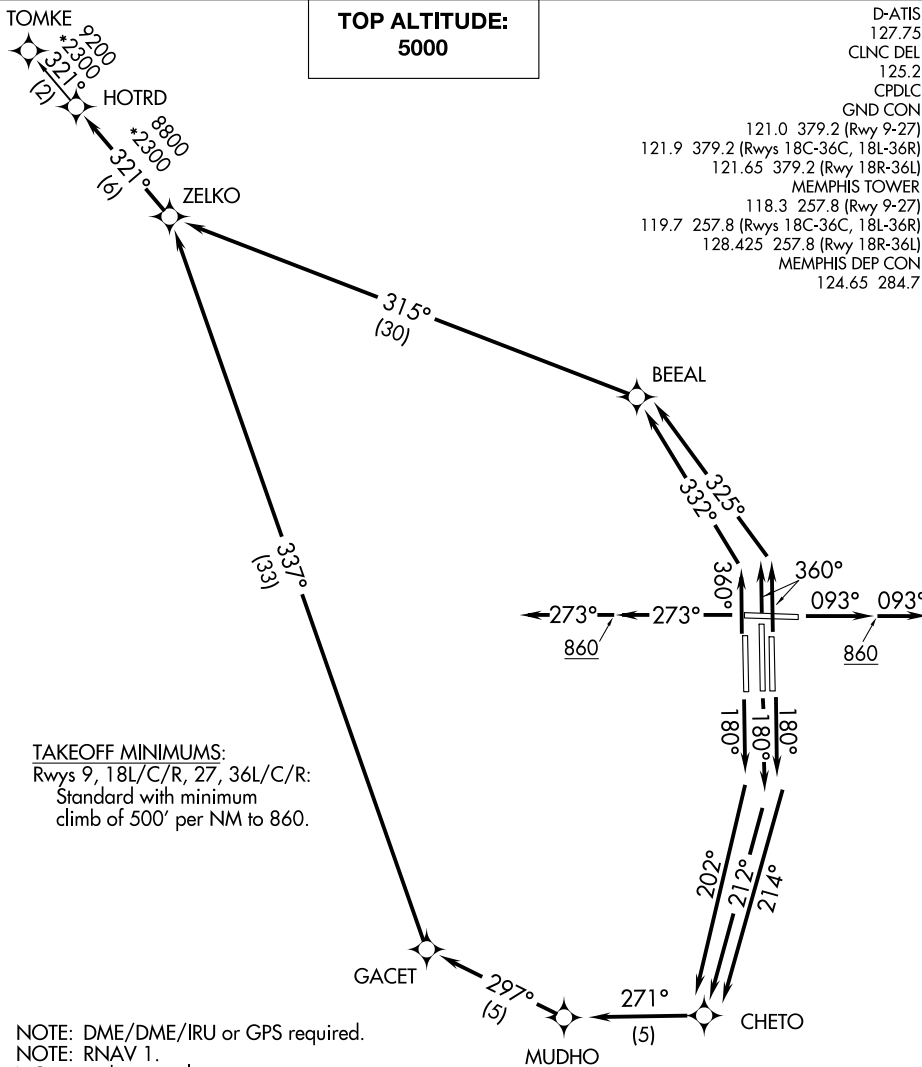


HOTRD FIVE DEPARTURE (RNAV)

MEMPHIS, TENNESSEE

TOP ALTITUDE:  
5000

D-ATIS  
127.75  
CLNC DEL  
125.2  
CPDLC  
GND CON  
121.0 379.2 (Rwy 9-27)  
121.9 379.2 (Rwys 18C-36C, 18L-36R)  
121.65 379.2 (Rwy 18R-36L)  
MEMPHIS TOWER  
118.3 257.8 (Rwy 9-27)  
119.7 257.8 (Rwys 18C-36C, 18L-36R)  
128.425 257.8 (Rwy 18R-36L)  
MEMPHIS DEP CON  
124.65 284.7



TAKEOFF MINIMUMS:

Rwys 9, 18L/C/R, 27, 36L/C/R:

Standard with minimum  
climb of 500' per NM to 860.

NOTE: DME/DME/IRU or GPS required.

NOTE: RNAV 1.

NOTE: Turbojets only.

NOTE: Takeoff Rwys 18L/C/R, 36L/C/R: Radar required  
for non-GPS equipped aircraft.

NOTE: Takeoff Rwys 9, 27: Radar required.

NOTE: Transponder code will be issued via PDC or Memphis  
clearance delivery.

NOTE: Procedure authorized 0200-0600 local only.

NOTE: Accelerate to 250K, reaching 10000 MSL, maintain  
250K or greater, if unable advise ATC.

NOTE: If unable to accept climb rates, advise ATC on initial contact.

(NARRATIVE ON FOLLOWING PAGE)

NOTE: Chart not to scale.

HOTRD FIVE DEPARTURE (RNAV)

MEMPHIS, TENNESSEE