


RNAV (RNP) Y RWY 18L

MEMPHIS INTL (MEM)

APP CRS	Rwy Idg	9000
180°	TDZE	301
	Apt Elev	341

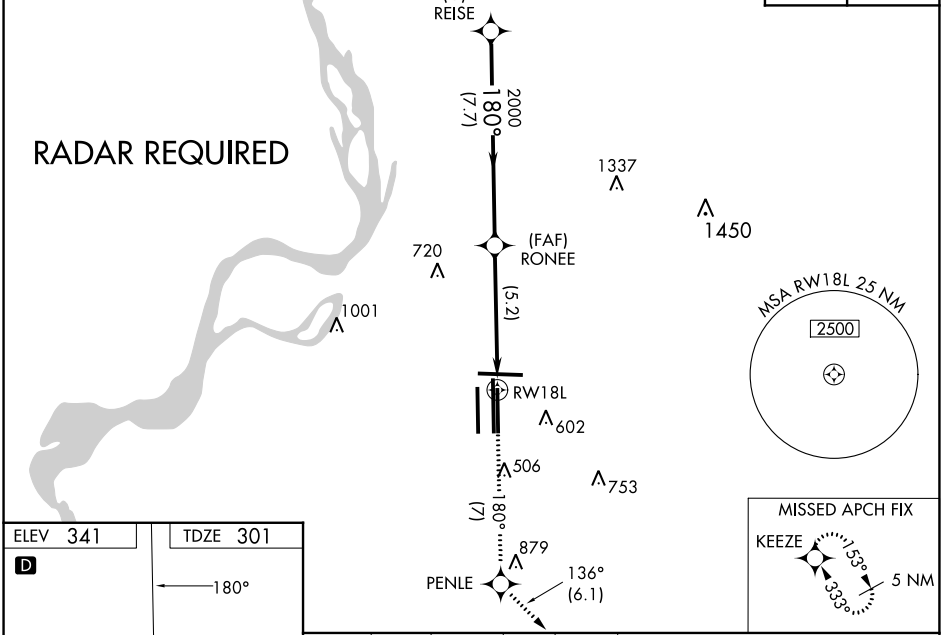
▼ For uncompensated Baro-VNAV systems, procedure NA below -9°C (16°F) or above 48°C (118 °F). GPS required. Simultaneous approach authorized. For inop ALS, increase RNP 0.30 * all Cats visibility to RVR 6000 and RNP 0.30 all Cats visibility to 1¼ SM.

MALSR

MISSED APPROACH: Climb to 5000 on track 180° to PENLE and on track 136° to KEEZE and hold, continue climb-in-hold to 5000. *Missed approach requires minimum climb of 400 feet per NM to 1000.

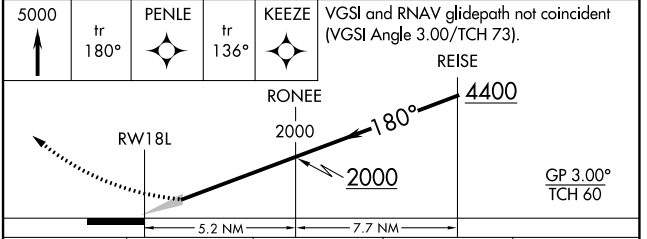
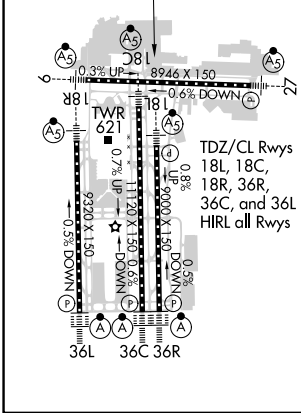
MEMPHIS APP CON	MEMPHIS TOWER	GND CON
119.1 291.6 (176°-355°)	(Rwy 9-27) 118.3 257.8	(Rwy 9-27) 121.0 379.2
125.8 338.3 (356°-175°)	(Rwys 18C-36C, 18L-36R) 119.7 257.8	(Rwys 18C-36C, 18L-36R) 121.9 379.2
	(Rwy 18R-36L) 128.425 257.8	(Rwy 18R-36L) 121.65 379.2

D-ATIS
127.75

CLNC DEL **125.2** CPDLC



ELEV	341
TDZE	301



CATEGORY	A	B	C	D
RNP 0.30 DA*	698/50 397 (400-1)			
RNP 0.30 DA	791/60 490 (500-1¼)			

AUTHORIZATION REQUIRED

SE-1, 11 JUL 2024 to 08 AUG 2024

SE-1, 11 JUL 2024 to 08 AUG 2024