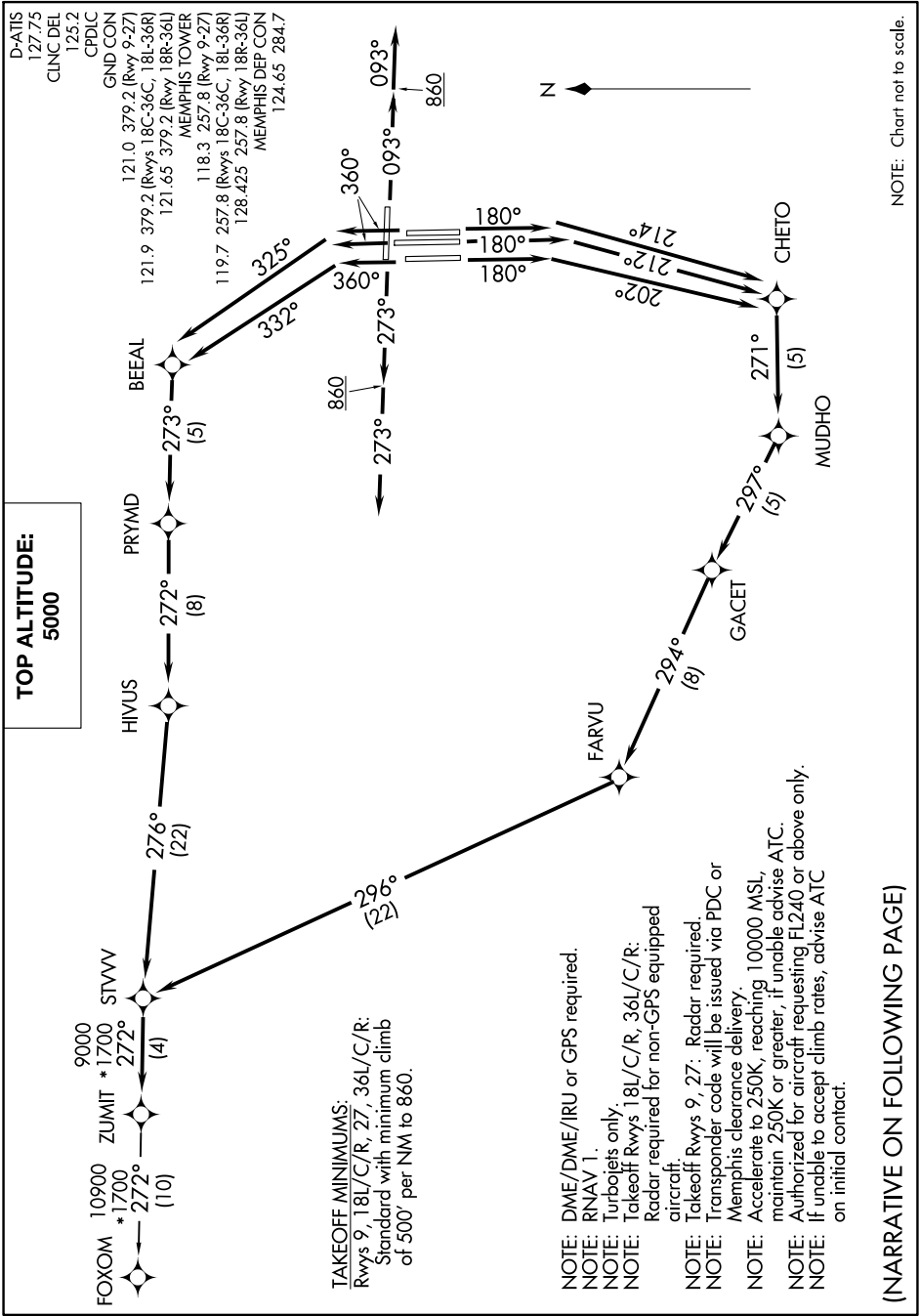


# ZUMIT FIVE DEPARTURE (RNAV)

SE-1, 11 JUL 2024 to 08 AUG 2024



**TOP ALTITUDE:**  
5000

FOXOM 10900 \*1700 STVV 9000  
 \*1700 ZUMIT \*1700  
 272° (110) 272° (4)

D-ATIS 127.75  
 CLNC DEL 125.2  
 CPDLC  
 GND CON  
 121.0 379.2 (Rwy 9-27)  
 121.9 379.2 (Rwys 18C-36C, 18L-36R)  
 121.65 379.2 (Rwy 18R-36L)  
 MEMPHIS TOWER  
 118.3 257.8 (Rwy 9-27)  
 119.7 257.8 (Rwys 18C-36C, 18L-36R)  
 128.425 257.8 (Rwy 18R-36L)  
 MEMPHIS DEP CON  
 124.65 284.7

**TAKEOFF MINIMUMS:**  
 Rwys 9, 18L/C/R, 27, 36L/C/R:  
 Standard with minimum climb  
 of 500' per NM to 860.

- NOTE: DME/DME/IRU or GPS required.
- NOTE: RNAV 1.
- NOTE: Turbojets only.
- NOTE: Takeoff Rwys 18L/C/R, 36L/C/R:  
Radar required for non-GPS equipped aircraft.
- NOTE: Takeoff Rwys 9, 27: Radar required.
- NOTE: Transponder code will be issued via PDC or Memphis clearance delivery.
- NOTE: Accelerate to 250K, reaching 10000 MSL, maintain 250K or greater, if unable advise ATC.
- NOTE: Authorized for aircraft requesting FL240 or above only.
- NOTE: If unable to accept climb rates, advise ATC on initial contact.

(NARRATIVE ON FOLLOWING PAGE)

NOTE: Chart not to scale.

SE-1, 11 JUL 2024 to 08 AUG 2024