


| | | |
|--|------------------------|---|
| WAAS CH 86500 W01A | APP CRS 011° | Rwy Idg 9013 TDZE 289 Apt Elev 298 |
|--|------------------------|---|

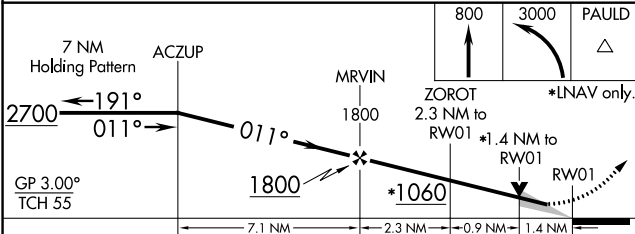
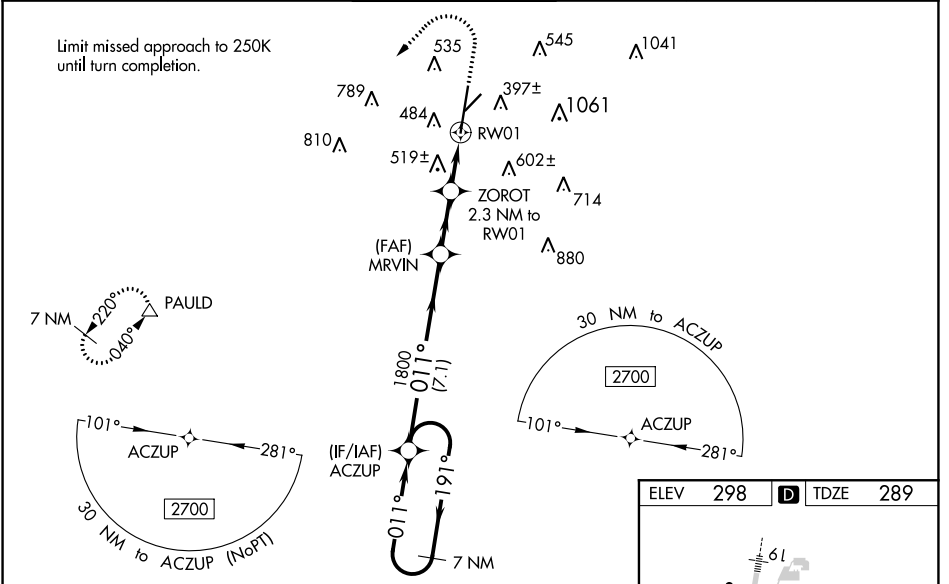
RNAV (GPS) RWY 1

KEY FLD (MEI)

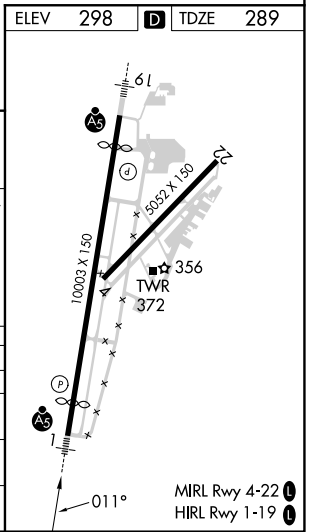
⚠ For uncompensated Baro-VNAV systems, LNAV/VNAV NA below -8°C (18°F) or above 54°C (130°F). Circling NA southeast of Rwy 1 and 22. DME/DME RNP-0.3 NA. When local altimeter setting not received, use Hattiesburg/Laurel Rgnl altimeter setting and increase all DA 138 feet and all MDA 140 feet, LPV all Cats visibility to RVR 3100, LNAV/VNAV all Cats and LNAV Cats C, D, and E visibilities to 1½ mile, and Circling Cat C visibility ½ mile and Cat D visibility ¼ mile. For inop MALSRL increase LPV Cat E to RVR 4000, LNAV/VNAV Cat E visibility to RVR 6000, and LNAV Cat E visibility to 1½ mile. For inop MALSRL when using Hattiesburg/Laurel Rgnl altimeter setting, increase LPV all Cats visibility to RVR 5000, LNAV/VNAV Cat E visibility to 1½ mile, and LNAV Cat E visibility to 1¾ mile. VDP and Baro-VNAV NA when using Hattiesburg/Laurel Rgnl altimeter setting. Night landing: Rwy 22 NA. ** RVR 1800 authorized with use of FD or AP or HUD to DA, NA when using Hattiesburg/Laurel Rgnl altimeter setting.

MALSRL

MISSED APPROACH:
 Climb to 800 then climbing left turn to 3000 direct PAULD and hold.

| | | | | | |
|--------------------------------|--|--|-------------------------------|--------------------------------|-------------------------|
| ATIS 126.475 291.675 | MERIDIAN APP CON * 120.5 269.325 | KEY TOWER * 133.975 (CTAF) 257.8 | GND CON 121.9 348.6 | CLNC DEL 121.9 348.6 | UNICOM 122.95 |
|--------------------------------|--|--|-------------------------------|--------------------------------|-------------------------|



| CATEGORY | A | B | C | D | E |
|-------------------|----------------------|----------------------|------------------------|-------------------------|-----------------------|
| LPV DA ** | 489/24 | | 200 (200-½) | | |
| LNAV/VNAV DA | 709/47 | | 420 (500-1) | | |
| LNAV MDA | 780/24 | 491 (500-½) | 780/50 | | 491 (500-1) |
| C CIRCLING | 860-1 562 (600-1) | 880-1 582 (600-1) | 960-1¾ 662 (700-1¾) | 1120-2¾ 822 (900-2¾) | 1120-3 822 (900-3) |



SC-4, 11 JUL 2024 to 08 AUG 2024

SC-4, 11 JUL 2024 to 08 AUG 2024

RNAV (GPS) RWY 1