

GLADZ THREE DEPARTURE (RNAV)

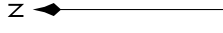
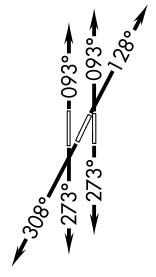
SE-3, 11 JUL 2024 to 08 AUG 2024

RNAV-1 DME/DME/IRU or GPS.
RADAR required.

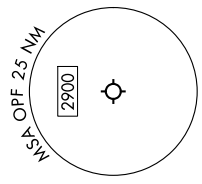
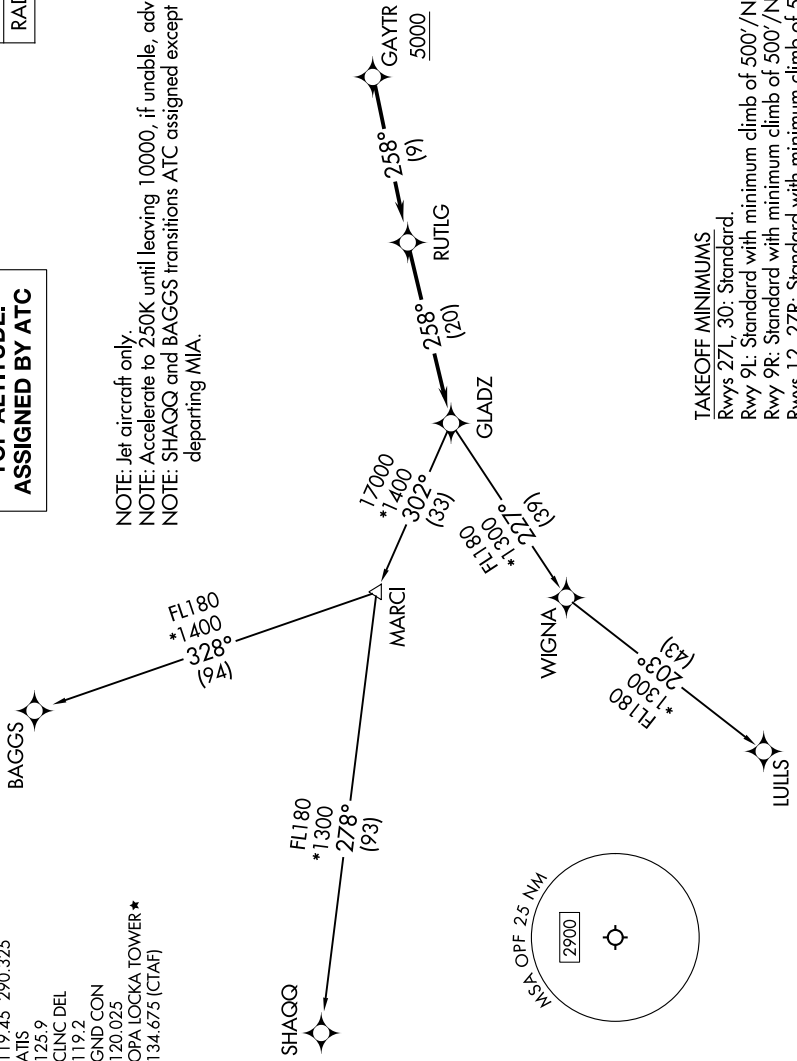
**TOP ALTITUDE:
ASSIGNED BY ATC**

MIAMI DEP CON
119.45 290.325
ATIS
125.9
CLNC DEL
119.2
GND CON
120.025
OPA LOCKA TOWER *
134.675 (CTAF)

NOTE: Jet aircraft only.
NOTE: Accelerate to 250K until leaving 10000, if unable, advise ATC.
NOTE: SHAGQ and BAGGS transitions ATC assigned except aircraft departing MIA.



TAKEOFF MINIMUMS
Rwys 27L, 30: Standard
Rwy 9L: Standard with minimum climb of 500'/NM to 1000.
Rwy 9R: Standard with minimum climb of 500'/NM to 700.
Rwys 12, 27R: Standard with minimum climb of 500'/NM to 600.



(CONTINUED ON FOLLOWING PAGE)

NOTE: Chart not to scale.

SE-3, 11 JUL 2024 to 08 AUG 2024