

LOC/DME I-OLX <b>111.55</b> Chan 52 (Y)	APP CRS <b>128°</b>	Rwy Idg TDZE Apt Elev	<b>6000</b> <b>8</b> <b>8</b>
---	------------------------	-----------------------------	-------------------------------------

# ILS or LOC RWY 12

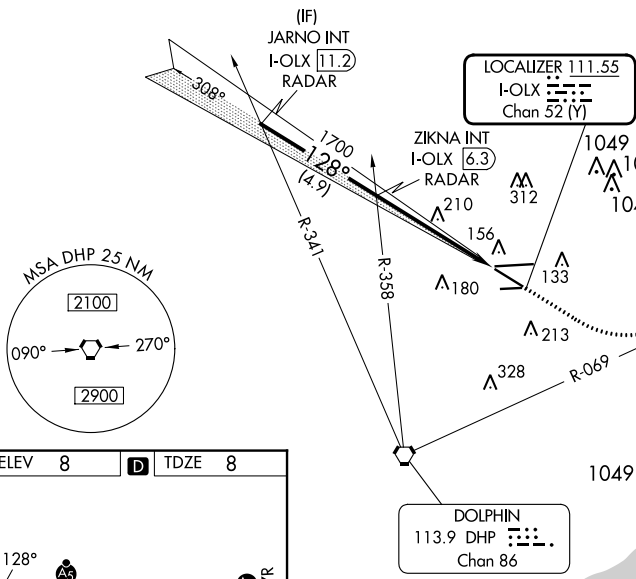
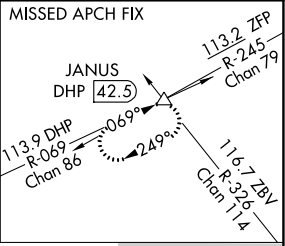
MIAMI-OPA LOCKA EXEC (OPF)

**⚠** Inop table does not apply to S-ILS 12. Helicopter visibility reduction below 3/4 SM NA. VDP NA with Miami Intl altimeter setting. When local altimeter setting not received, use Miami Intl altimeter setting and increase all DA/MDA 20 feet and Circling Cat D visibility 1/4 SM. For inop MALSR, increase S-LOC 12 Cats A and B visibility to 1 mile and Cats C and D visibility to 1 1/8 miles.

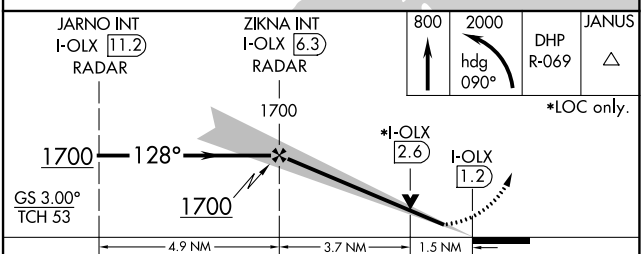
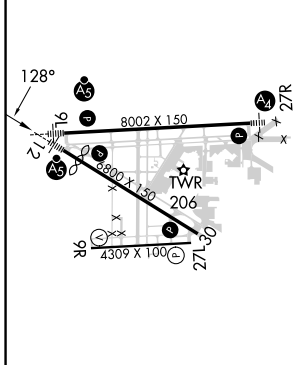
**MALSR**  
MISSED APPROACH: Climb to 800 then climbing left turn to 2000 on heading 090° and DHP VORTAC R-069 to JANUS INT/DHP 42.5 DME and hold.

ATIS <b>125.9</b>	MIAMI APP CON <b>128.6 306.975</b>	OPA LOCKA TOWER * <b>134.675 (CTAF) 0</b>	GND CON <b>120.025</b>	CLNC DEL <b>119.2</b>	GCO <b>119.45</b>
----------------------	---------------------------------------	--	---------------------------	--------------------------	----------------------

## RADAR REQUIRED



ELEV 8	<b>D</b>	TDZE 8
--------	----------	--------



MIRL Rwy 9R-27L HIRL Rwys 9L-27R and 12-30 FAF to MAP 5.2 NM	Knots: 60 90 120 150 180			
	Min:Sec: 5:12 3:28 2:36 2:05 1:44			
CATEGORY	A	B	C	D
S-ILS 12	208-3/4 200 (200-3/4)			
S-LOC 12	520-3/4	512 (600-3/4)	520-1	512 (600-1)
CIRCLING	540-1	532 (600-1)	620-1 3/4 612 (700-1 3/4)	740-2 1/4 732 (800-2 1/4)

SE-3, 11 JUL 2024 to 08 AUG 2024

SE-3, 11 JUL 2024 to 08 AUG 2024