

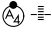
APP CRS	Rwy Idg	<b>10220</b>
<b>272°</b>	TDZE	<b>9</b>
	Apt Elev	<b>9</b>

# RNAV (RNP) Z RWY 26L

MIAMI INTL (MIA)

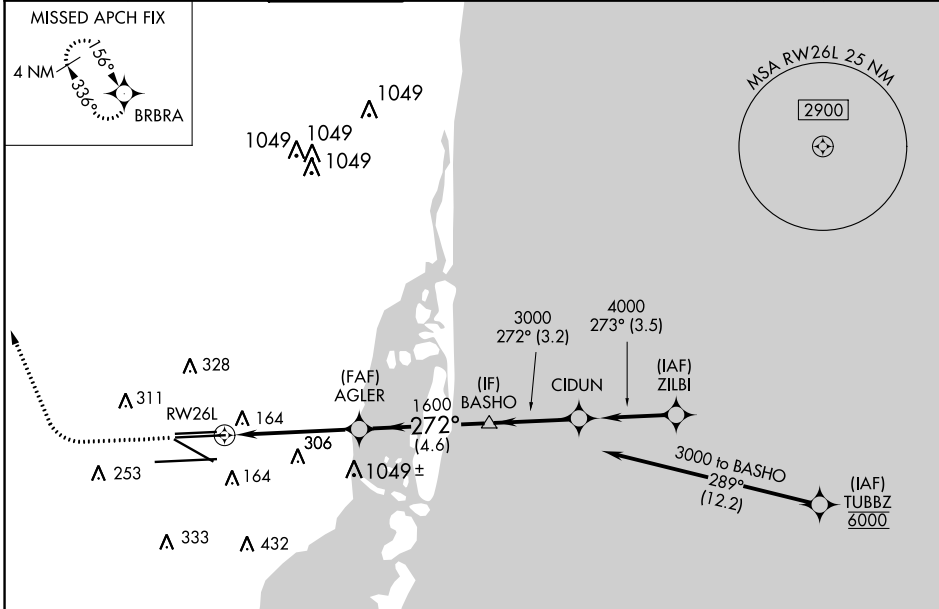
RNP AR APCH-GPS.

Simultaneous approach authorized. For uncompensated Baro-VNAV systems, procedure NA below 8°C or above 54°C. For inop ALS, increase RNP 0.20 visibility to RVR 5500 for all Cats and increase RNP 0.30 visibility to RVR 6000 for all Cats.

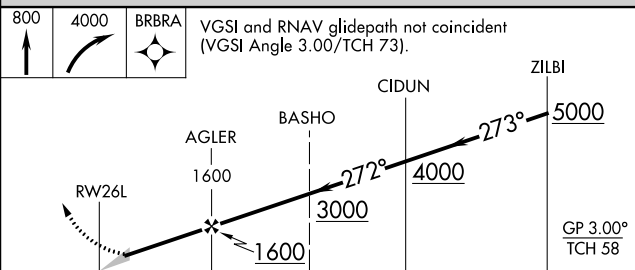
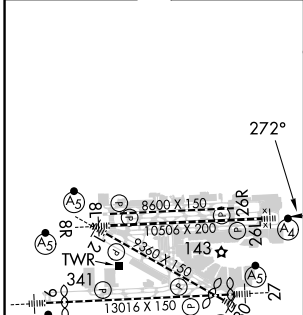
MALSF 

MISSED APPROACH: Climb to 800 then climbing right turn to 4000 direct BRBRA and hold, continue climb-in-hold to 4000.

D-ATIS	MIAMI APP CON	MIAMI TOWER	GND CON	CLNC DEL	CPDLC
ARR <b>119.15</b>	<b>124.85 322.3</b>	<b>118.3 256.9</b>	<b>121.8</b> (8L/8R/12/26L/26R)	<b>135.35</b>	
DEP <b>133.675</b>			<b>127.5</b> (9/27/30)	<b>348.6</b>	



ELEV 9	<b>D</b>	TDZE 9
--------	----------	--------



CATEGORY	A	B	C	D
RNP 0.20 DA		368/40	359 (400-¾)	
RNP 0.30 DA		418/50	409 (500-1)	

## AUTHORIZATION REQUIRED

SE-3, 11 JUL 2024 to 08 AUG 2024

SE-3, 11 JUL 2024 to 08 AUG 2024