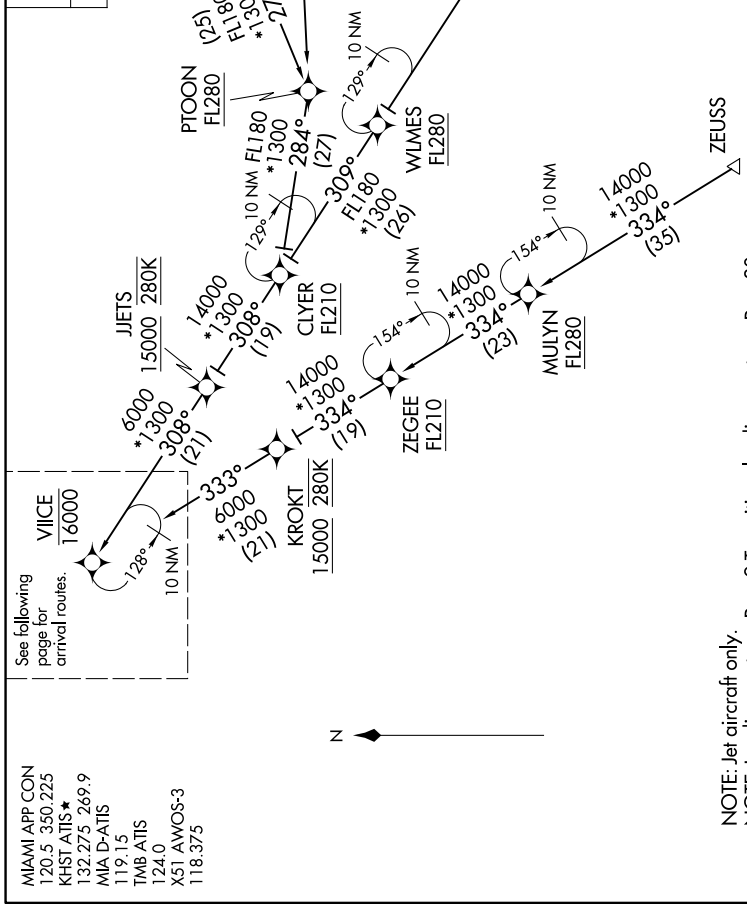


VIICE TWO ARRIVAL (RNAV) Transition Routes

MIAMI, FLORIDA

SE-3, 11 JUL 2024 to 08 AUG 2024

RNAV 1 - DME/DME/IRU or GPS.
 ZEUSS, MADIZ, ZQA, NICKO TRANSITION: GPS
 RADAR required.



MADIZ TRANSITION (MADIZ.VIICE2)
 NASSAU TRANSITION (ZQA.VIICE2)
 NICKO TRANSITION (NICKO.VIICE2)
 PTOON TRANSITION (PTOON.VIICE2)
 ZEEGEE TRANSITION (ZEEGEE.VIICE2)
 ZEUSS TRANSITION (ZEUSS.VIICE2)

See following page for arrival routes.

MIAMI APP CON
 120.5 350.225
 KHST ATIS *
 132.275 269.9
 MIA D-ATIS
 119.15
 TMB ATIS
 124.0
 X51 AMOS-3
 118.375

NOTE: Jet aircraft only.
 NOTE: Landing east use Rwy 9 Transition, landing west use Rwy 30 Transition. Expect Rwy assignment from MIA approach prior to VIICE.
 NOTE: Do not file PTOON or ZEGEE Transition - to be assigned by ATC.

(CONTINUED ON FOLLOWING PAGE)

NOTE: Chart not to scale.

SE-3, 11 JUL 2024 to 08 AUG 2024

VIICE TWO ARRIVAL (RNAV) Transition Routes

MIAMI, FLORIDA