

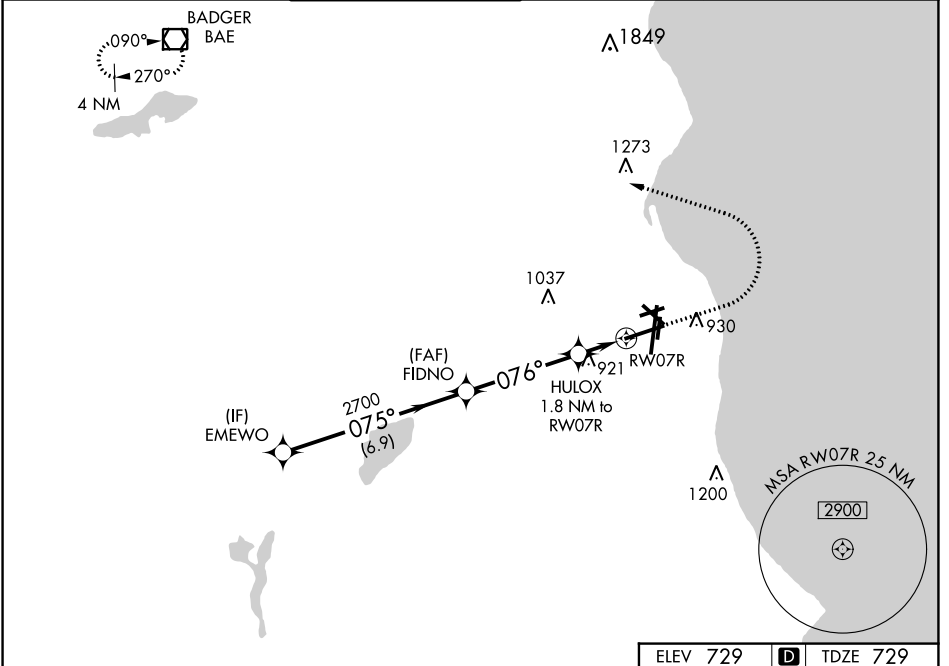
WAAS CH <b>69226</b> <b>W07A</b>	APP CRS <b>076°</b>	Rwy Idg TDZE Apt Elev	<b>8012</b> <b>729</b> <b>729</b>
--	------------------------	-----------------------------	---

# RNAV (GPS) Z RWY 7R

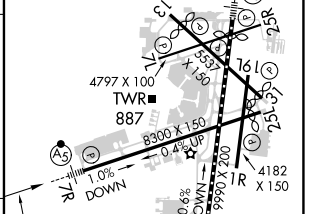
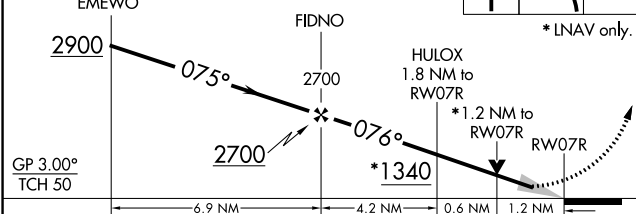
GENERAL MITCHELL INTL (MKE)

<p>For uncompensated Baro-VNAV systems, LNAV/VNAV NA below -20°C (-4°F) or above 54°C (130°F). DME/DME RNP-0.3 NA. # RVR 1800 authorized with use of FD or AP or HUD to DA.</p>		<p>MISSED APPROACH: Climb to 2900 then climbing left turn to 3000 direct BAE VOR/DME and hold.</p>
	<p>For uncompensated Baro-VNAV systems, LNAV/VNAV NA below -20°C (-4°F) or above 54°C (130°F). DME/DME RNP-0.3 NA. # RVR 1800 authorized with use of FD or AP or HUD to DA.</p>	

D-ATIS <b>126.4</b>	MILWAUKEE APP CON <b>126.5 307.0</b>	MILWAUKEE TOWER <b>124.575 269.05</b>	GND CON <b>121.8 263.125</b>	CLNC DEL <b>120.8</b>	CPDLC
------------------------	---	--	---------------------------------	--------------------------	-------



ELEV 729	<b>D</b>	TDZE 729
----------	----------	----------



CATEGORY	A	B	C	D
LPV DA #		929/24	200 (200-½)	
LNAV/VNAV DA		1232-1¼	503 (600-1¼)	
LNAV MDA	1180/24	451 (500-½)	1180/45	451 (500-¾)
<b>C</b> CIRCLING	1240-1	511 (600-1)	1240-1½ 511 (600-1½)	1360-2 631 (700-2)

TDZ/CL Rwy 1L  
REIL Rwy 1R, 7L,  
13, 25R, 25L and 31  
HIRL Rwy 1L-19R and 7R-25L  
MIRL Rwy 1R-19L, 13-31 and 7L-25R

EC-3, 11 JUL 2024 to 08 AUG 2024

EC-3, 11 JUL 2024 to 08 AUG 2024