

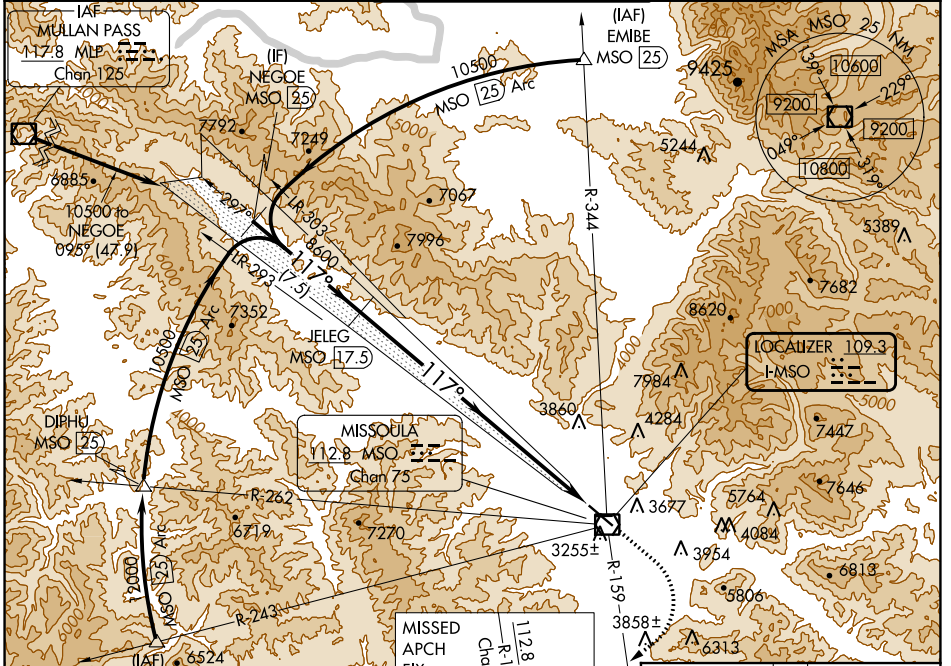
LOC I-MSO	APP CRS	Rwy ldg TDZE	9501
109.3	117°	Apt Elev	3206

ILS Z RWY 12

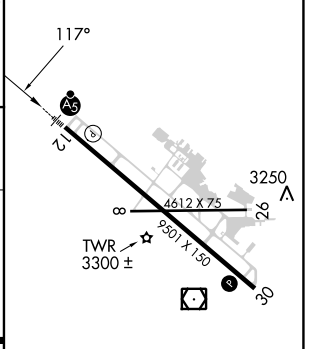
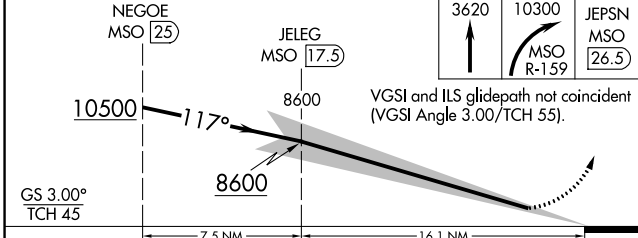
MISSOULA MONTANA (MISO)

DME required.		MALSRR	MISSED APPROACH: Climb to 3620 then climbing right turn to 10300 on MSO VOR/DME R-159 to JEPSN/MSO 26.5 DME and hold. Missed approach requires minimum climb of 410 feet per NM to 9800; if unable to meet climb gradient, see ILS Y RWY 12.
-12°C			

ATIS	SPOKANE APP CON *	MISSOULA TOWER *	GND CON	UNICOM
126.65	124.9 298.95	118.4 (CTAF) 377.175	121.9	122.95



ELEV	3206	TDZE	3200
------	------	------	------



CATEGORY	A	B	C	D
S-ILS 12		3411/24	211 (300-½)	

NW-1, 11 JUL 2024 to 08 AUG 2024

NW-1, 11 JUL 2024 to 08 AUG 2024