

APP CRS <b>339°</b>	Rwy Idg TDZE Apt Elev	<b>N/A</b> <b>N/A</b> <b>3206</b>
------------------------	-----------------------------	---

# RNAV (GPS)-D

MISSOULA MONTANA (MISO)

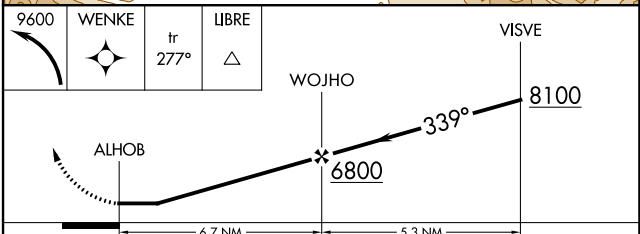
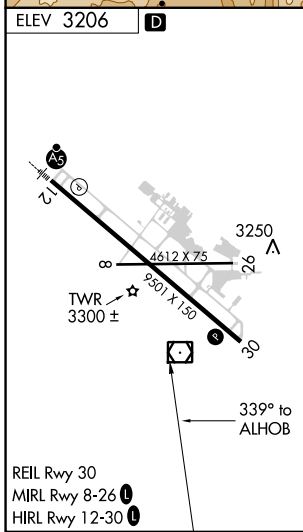
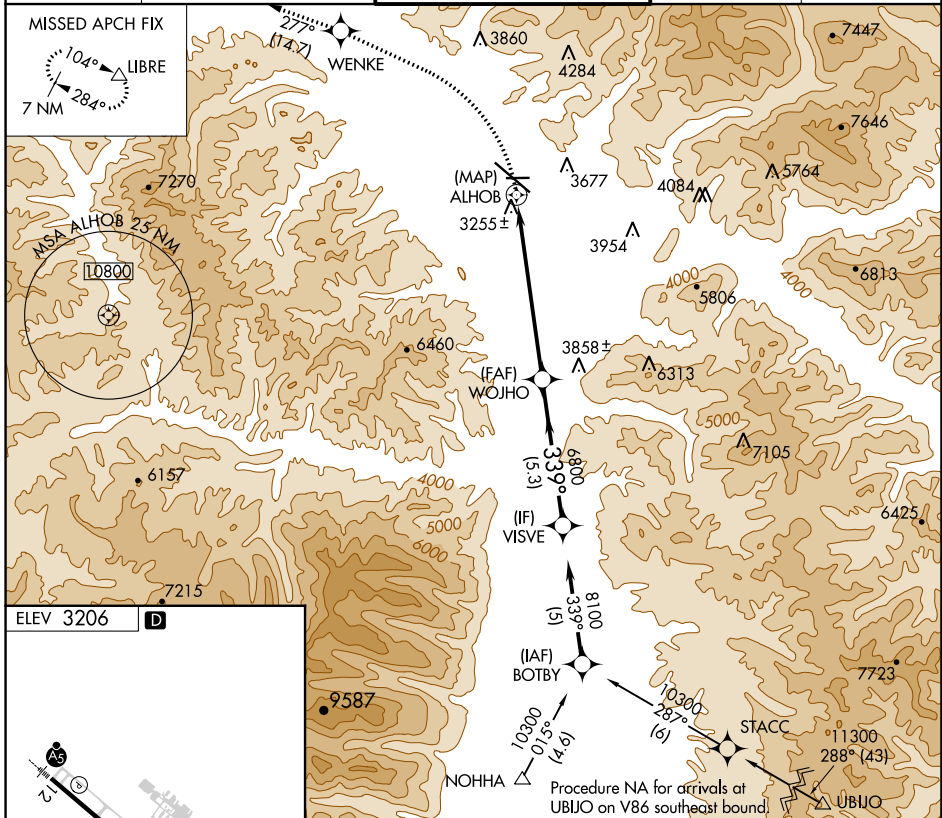
RNP APCH.

**▲** Circling NA for Cats C and D northeast of Rwy 12-30.

**❄** -12°C

MISSED APPROACH: Climbing left turn to 9600 direct WENKE and on track 277° to LIBRE and hold, continue climb-in-hold to 9600.

ATIS <b>126.65</b>	SPOKANE APP CON * <b>124.9 298.95</b>	MISSOULA TOWER * <b>118.4 (CTAF) 377.175</b>	GND CON <b>121.9</b>	UNICOM <b>122.95</b>
-----------------------	--	---	-------------------------	-------------------------



CATEGORY	A	B	C	D
<b>C</b> CIRCLING	4280-1¼ 1074 (1100-1¼)	4700-1½ 1494 (1500-1½)	4700-3 1494 (1500-3)	5140-3 1934 (2000-3)

NW-1, 11 JUL 2024 to 08 AUG 2024

NW-1, 11 JUL 2024 to 08 AUG 2024