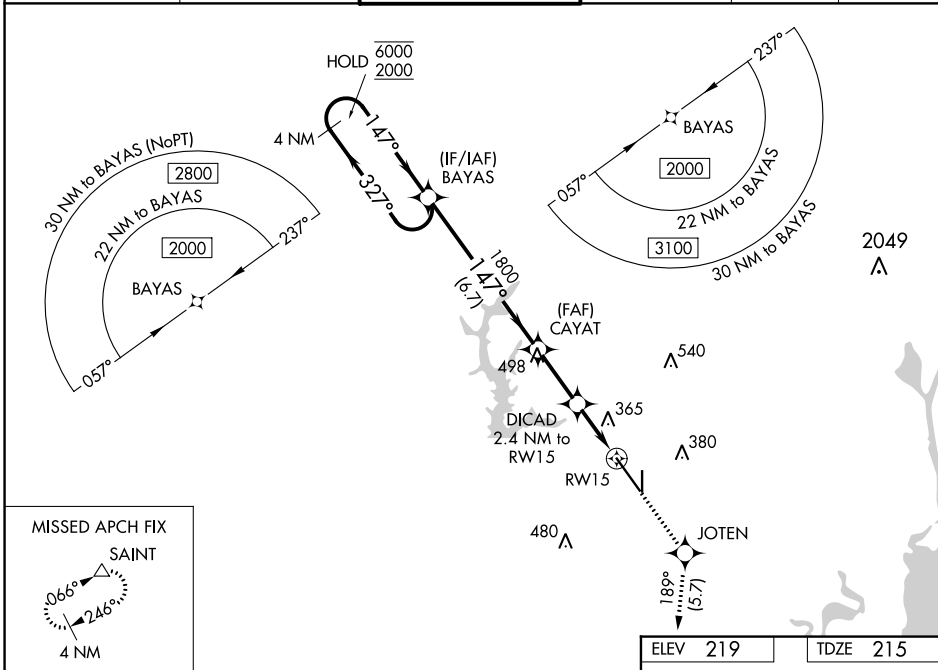


WAAS CH 97506 W15A	APP CRS 147°	Rwy Idg TDZE Apt Elev	8502 215 219
--	------------------------	-----------------------------	---

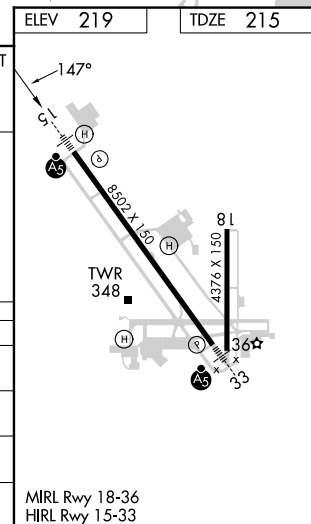
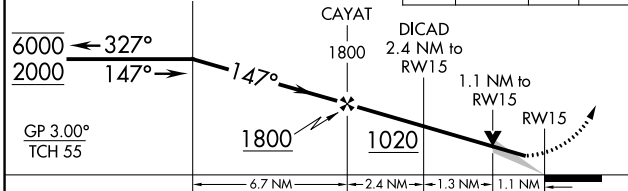
RNAV (GPS) RWY 15

MOBILE RGNL (MOB)

RNP APCH - GPS.		MALSR	MISSED APPROACH: Climb to 2000 direct JOTEN and on track 189° to SAINT and hold.		
⚠ For uncompensated Baro-VNAV systems, LNAV/VNAV NA below -4°C or above 42°C. For inop ALS, increase LNAV Cats C/D visibility to RVR 6000. * RVR 1800 authorized with use of FD or AP or HUD to DA.					
ATIS	MOBILE APP CON ★	MOBILE TOWER ★	GND CON	CLNC DEL	UNICOM
124.75 257.85	118.5 269.3	118.3 (CTAF) 239.0	121.9 348.6	119.85	122.95



VGSI and RNAV glidepath not coincident (VGSI Angle 3.00/TCH 50).
 4 NM Holding Pattern BAYAS



CATEGORY	A	B	C	D
LPV DA*		415/24	200 (200-½)	
LNAV/VNAV DA		636/45	421 (500-¾)	
LNAV MDA		620/40	405 (500-¾)	
CIRCLING	680-1	461 (500-1)	740-1½ 521 (600-1½)	780-2 561 (600-2)

MIRL Rwy 18-36
 HIRL Rwy 15-33

SE-4, 11 JUL 2024 to 08 AUG 2024

SE-4, 11 JUL 2024 to 08 AUG 2024