


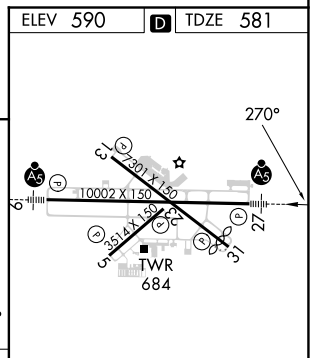
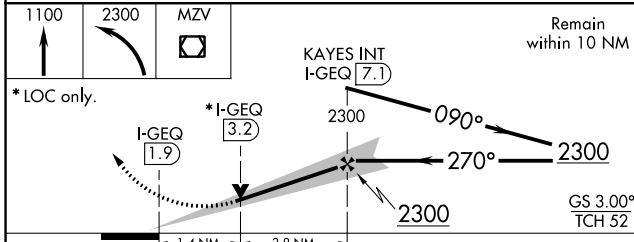
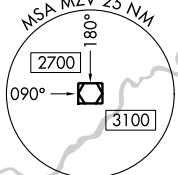
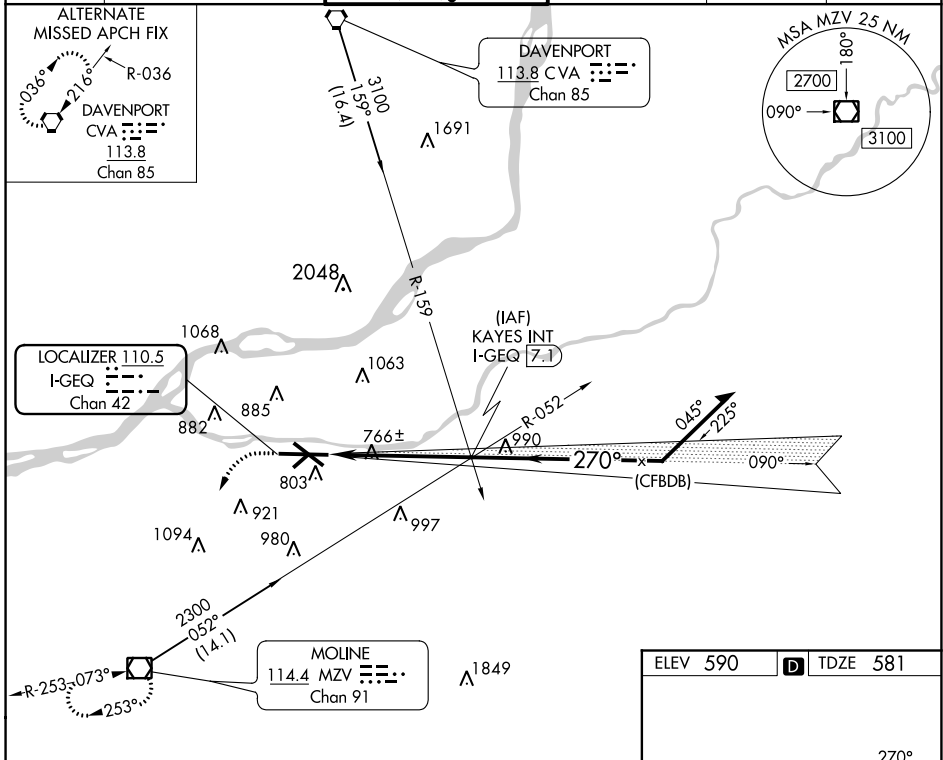
LOC/DME I-GEQ 110.5 Chan 42	APP CRS 270°	Rwy Idg 10002 TDZE 581 Apt Elev 590
--	------------------------	--

ILS or LOC RWY 27

QUAD CITIES INTL (MLI)

<p>▼ Circling to Rwy 5 NA at night. When local altimeter setting not received, use Davenport altimeter setting and increase DA to 828 feet and all MDA 60 feet, increase S-LOC-27 and Circling Cts C/D visibility ¼ SM. # RVR 1800 authorized with use of FD or AP or HUD to DA.</p>	<p>MALSR </p>	<p>MISSED APPROACH: Climb to 1100, then climbing left turn to 2300 direct MZV VOR/DME and hold.</p>
---	--	--

ATIS 121.2	QUAD CITY APP CON * 125.95 257.8	QUAD CITY TOWER * 119.4 (CTAF) 0 269.55	GND CON 121.9	CLNC DEL 124.05	UNICOM 122.95
----------------------	--	---	-------------------------	---------------------------	-------------------------



CATEGORY	A	B	C	D
S-ILS 27#	781/24 200 (200-½)			
S-LOC 27	1060/24 479 (500-½)	1060/40 479 (500-¾)	1060/50 479 (500-1)	
CIRCLING	1140-1 550 (600-1)	1200-1 610 (700-1)	1320-2 730 (800-2)	1420-2¾ 830 (900-2¾)

EC-3, 11 JUL 2024 to 08 AUG 2024

EC-3, 11 JUL 2024 to 08 AUG 2024