

LOC/DME I-MLI 110.5 Chan 42	APP CRS 090°	Rwy Idg 1000Z TDZE 587 Apt Elev 590
---	------------------------	--

ILS or LOC RWY 9

QUAD CITIES INTL (MLI)

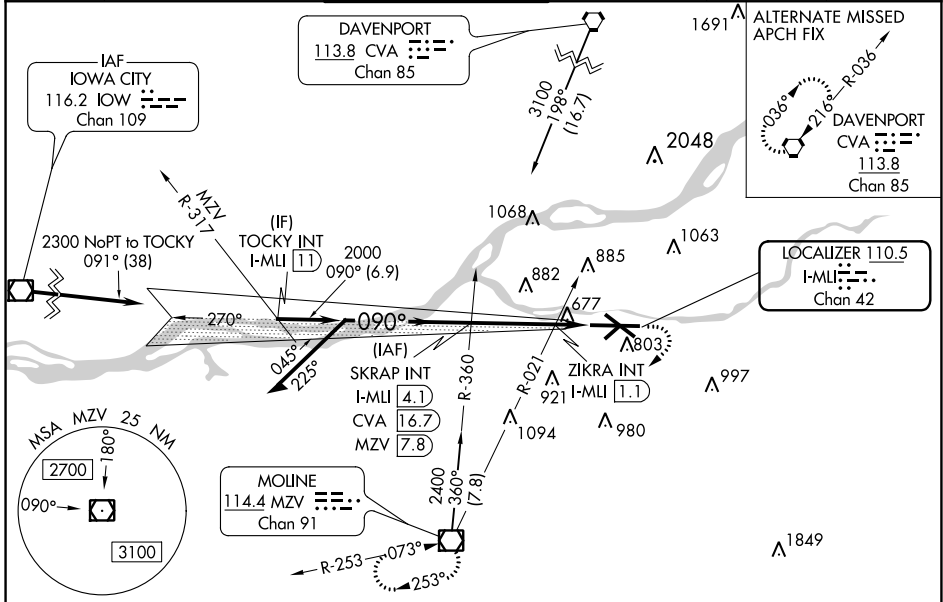
DME required for procedure entry at CVA VORTAC and MZV VOR/DME.

⚠ Circling to Rwy 5 NA at night. For inop ALS, increase S-LOC 9 Cats C and D visibility to 1 3/4 SM. ZIKRA Minimums: For inop ALS, increase S-LOC Cats C and D visibility to 1 SM.
RVR 1800 authorized with use of FD or AP or HUD to DA.

MALSR

MISSED APPROACH: Climb to 1100 then climbing right turn to 2300 direct MZV VOR/DME and hold.

ATIS 121.2	QUAD CITY APP CON * 125.95 257.8	QUAD CITY TOWER * 119.4(CTAF) 269.55	GND CON 121.9	CLNC DEL 124.05	UNICOM 122.95
----------------------	--	--	-------------------------	---------------------------	-------------------------



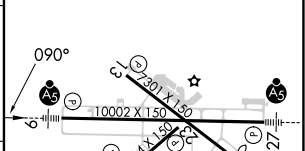
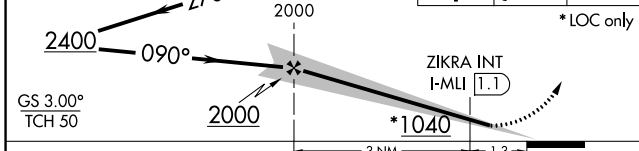
Remain within 10 NM

2400 → 270° → SKRAP INT I-MLI 4.1 → 2000

2400 → 090° → ZIKRA INT I-MLI 1.1 → 2000

*LOC only

ELEV 590 | **D** TDZE 587



CATEGORY	A	B	C	D
S-ILS 9#	787/24 200 (200-1/2)			
S-LOC 9	1040/24	453 (500-1/2)	1040/50	453 (500-1)
CIRCLING	1140-1 550 (600-1)	1200-1 610 (700-1)	1320-2 730 (800-2)	1420-2 3/4 830 (900-2 3/4)
ZIKRA MINIMUMS (Dual VOR receivers or DME required)				
S-LOC 9	940/24	353 (400-1/2)	940/35	353 (400-5/8)
CIRCLING	1140-1 550 (600-1)	1200-1 610 (700-1)	1320-2 730 (800-2)	1420-2 3/4 830 (900-2 3/4)

MIRL Rwy 5-23
REIL Rwys 13 and 31
HIRL Rwys 9-27 and 13-31

FAF to MAP 4.3 NM

Knots	60	90	120	150	180
Min:Sec	4:18	2:52	2:09	1:43	1:26

EC-3, 11 JUL 2024 to 08 AUG 2024

EC-3, 11 JUL 2024 to 08 AUG 2024