

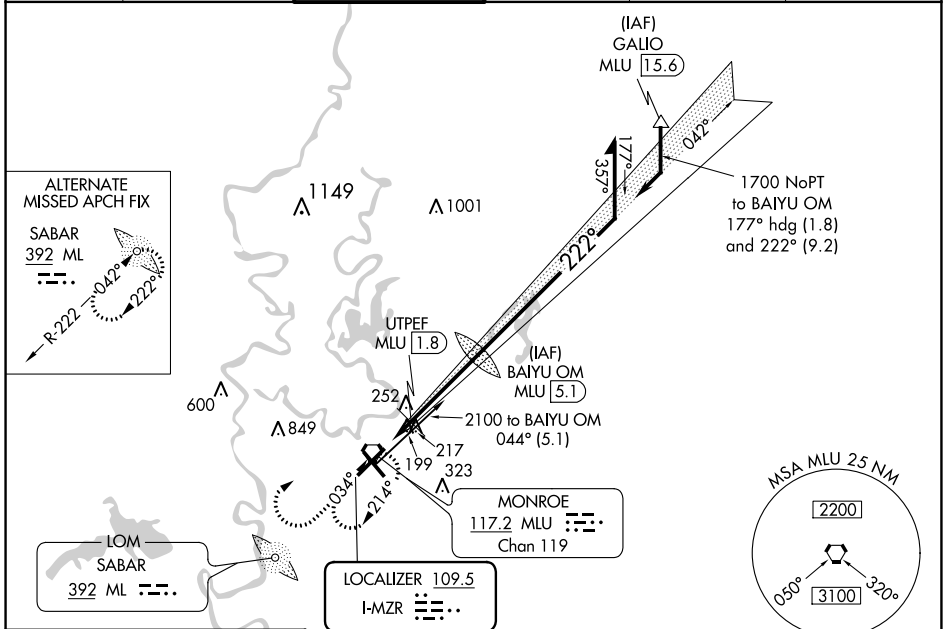
LOC I-MZR 109.5	APP CRS 222°	Rwy Idg TDZE Apt Elev	7504 78 79
---------------------------	------------------------	-----------------------------	---------------------------------------

ILS or LOC RWY 22

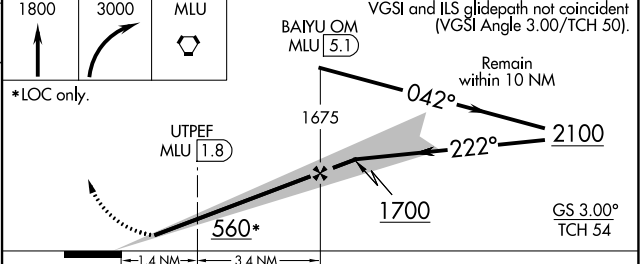
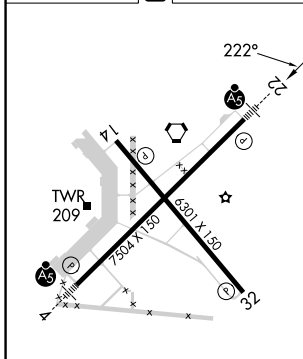
MONROE RGNL (MLU)

DME or RADAR required for procedure entry.		MALSR 	MISSED APPROACH: Climb to 1800 then climbing right turn to 3000 direct MLU VORTAC and hold, continue climb-in-hold to 3000.
 Circling Rwy 14 NA at night. For inop ALS, increase S-LOC 22 Cat C/D visibility to 1 3/8 SM. # DME from MLU VORTAC.			

ATIS 125.05	MONROE APP CON * 118.15 290.475	MONROE TOWER * 118.9 (CTAF) 257.8	GND CON 121.9	CLNC DEL 121.65	UNICOM 122.95
-----------------------	---	---	-------------------------	---------------------------	-------------------------



ELEV 79	D	TDZE 78
---------	----------	---------



CATEGORY	A	B	C	D
S-ILS 22	278-1/2 200 (200-1/2)			
S-LOC 22	560-1/2	482 (500-1/2)	560-1	482 (500-1)
C CIRCLING	580-1	501 (600-1)	740-1 3/4 661 (700-1 3/4)	1160-3 1081 (1100-3)
# UTPEF FIX MINIMUMS				
S-LOC 22	500-1/2	422 (500-1/2)	500-3/4	422 (500-3/4)
C CIRCLING	580-1	501 (600-1)	740-1 3/4 661 (700-1 3/4)	1160-3 1081 (1100-3)

REIL Rws 14 and 32
MIRL Rwy 14-32
HIRL Rwy 4-22

FAF to MAP 4.8 NM

Knots	60	90	120	150	180
Min:Sec	4:48	3:12	2:24	1:55	1:36

SC-4, 11 JUL 2024 to 08 AUG 2024

SC-4, 11 JUL 2024 to 08 AUG 2024