

WAAS CH <b>56428</b> <b>W32A</b>	APP CRS <b>317°</b>	Rwy ldg TDZE <b>76</b> Apt Elev <b>79</b>	<b>6301</b>
--	------------------------	---	-------------

# RNAV (GPS) RWY 32

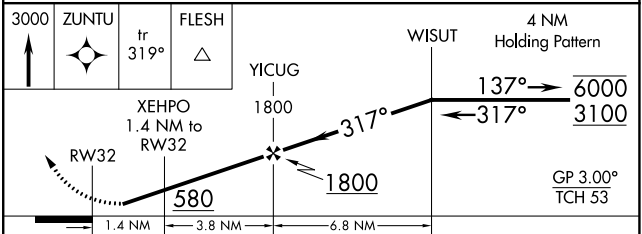
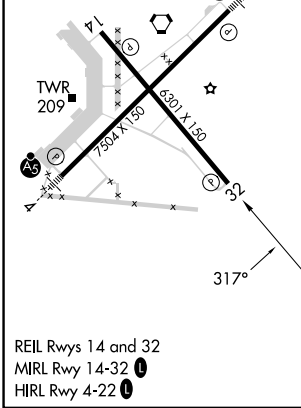
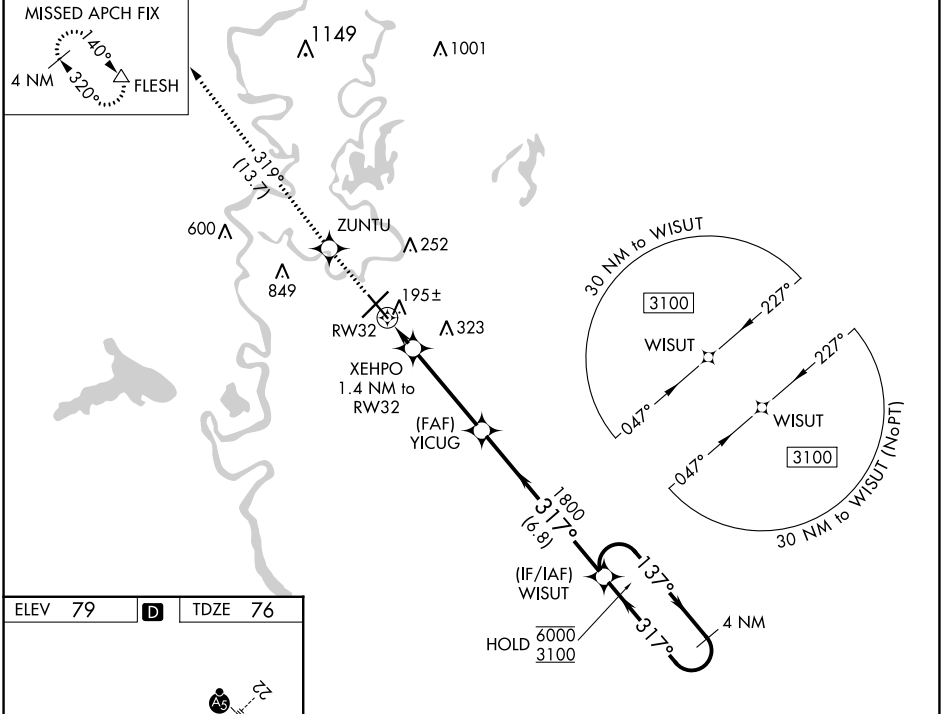
MONROE RGNL (MLU)

RNP APCH - GPS.

**ASR** Rwy 32 helicopter visibility reduction below 3/4 SM NA.  
For uncompensated Baro-VNAV systems, procedure NA below -5°C or above 54°C. Circling Rwy 14 NA at night.

MISSED APPROACH: Climb to 3000 direct ZUNTU and on track 319° to FLESH and hold.

ATIS <b>125.05</b>	MONROE APP CON * <b>118.15 290.475</b>	MONROE TOWER * <b>118.9 (CTAF) 257.8</b>	GND CON <b>121.9</b>	CLNC DEL <b>121.65</b>	UNICOM <b>122.95</b>
-----------------------	---	---	-------------------------	---------------------------	-------------------------



CATEGORY	A	B	C	D
LPV DA		326-1	250 (300-1)	
LNVA/VNAV DA		356-1	280 (300-1)	
LNVA MDA	460-1	384 (400-1)	460-1½ 384 (400-1½)	
<b>C</b> CIRCLING	540-1 461 (500-1)	580-1 501 (600-1)	740-1¾ 661 (700-1¾)	1160-3 1081 (1100-3)

SC-4, 11 JUL 2024 to 08 AUG 2024

SC-4, 11 JUL 2024 to 08 AUG 2024