

LOC/DME I-MRY <b>110.7</b> Chan <b>44</b>	APP CRS <b>098°</b>	Rwy ldg <b>7000</b> TDZE <b>198</b> Apt Elev <b>257</b>
---	------------------------	---

# ILS or LOC RWY 10R

MONTEREY RGNL (MRY)

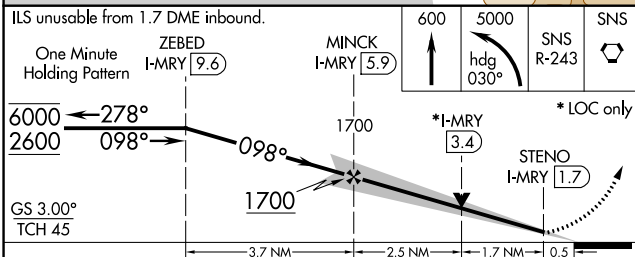
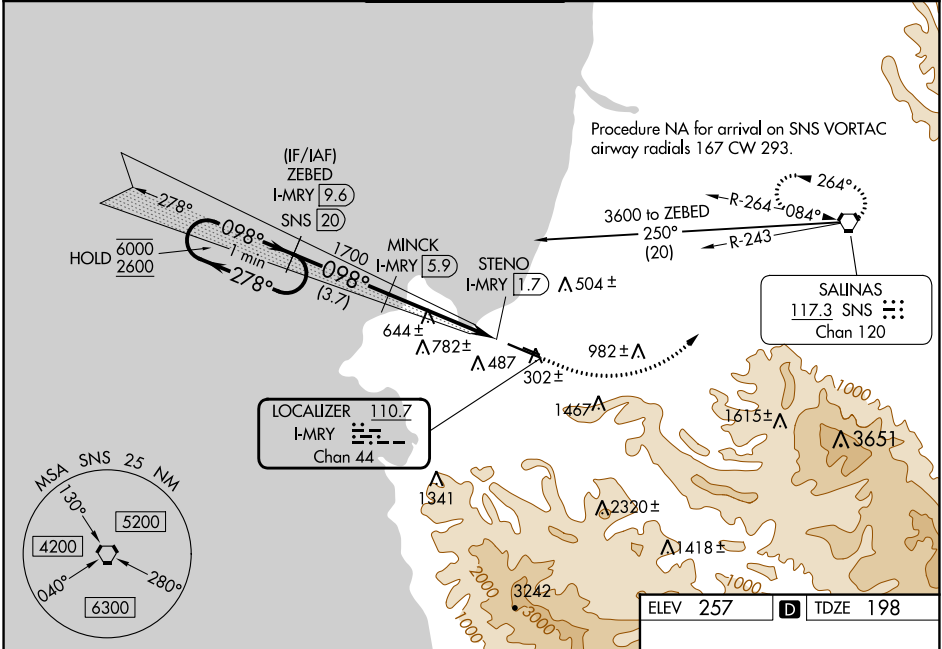
DME required.

**▼**  
**▲** Circling NA south of Rwy 10R-28L.  
For inop ALS, increase S-ILS 10R all Cats visibility to RVR 6000, and increase S-LOC 10R Cat C and D visibility to 2 SM.

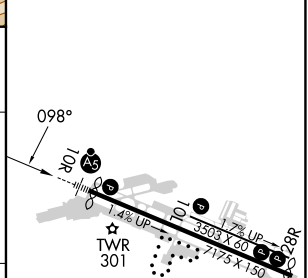
MALSRL  
**45**

MISSED APPROACH: Climb to 600 then climbing left turn to 5000 on heading 030° and on SNS VORTAC R-243 to SNS VORTAC and hold, continue climb-in-hold to 5000. # Missed approach requires minimum climb of 265 feet per NM to 1360.

ATIS <b>119.25</b>	NORCAL APP CON <b>133.0 251.15</b> (001°-135°) <b>127.15 307.125</b> (136°-360°)	MONTEREY TOWER * <b>118.4</b> (CTAF) <b>257.8</b>	GND CON <b>120.875 348.6</b>	CLNC DEL <b>135.45</b>	UNICOM <b>122.95</b>
-----------------------	--	--	---------------------------------	---------------------------	-------------------------



ELEV 257	TDZE 198
----------	----------



CATEGORY	A	B	C	D
S-ILS 10R#		398/24	200 (200-½)	
S-ILS 10R		583/35	385 (400-⅝)	
S-LOC 10R	920/24	722 (700-½)	920-1⅝	722 (700-1⅝)
<b>C</b> CIRCLING	920-1	663 (700-1)	1280-3	1023 (1100-3)

MIRL Rwy 10L-28R  
HIRL Rwy 10R-28L  
REIL Rwy 28L  
REIL Rwy 10L and 28R

SW-2, 11 JUL 2024 to 08 AUG 2024

SW-2, 11 JUL 2024 to 08 AUG 2024