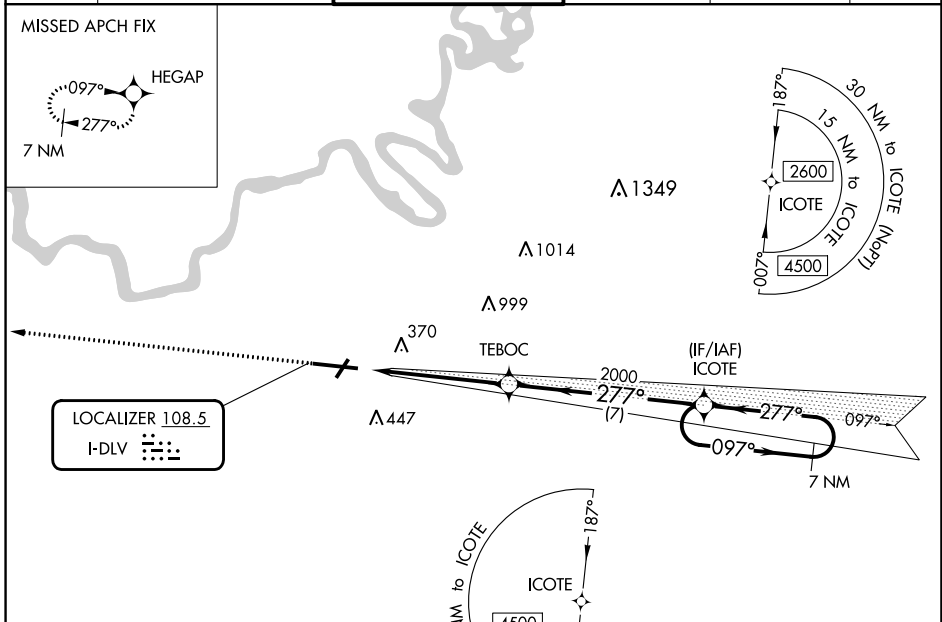


LOC I-DLV	APP CRS	Rwy Idg	<b>9020</b>
<b>108.5</b>	<b>277°</b>	TDZE	<b>197</b>
		Apt Elev	<b>221</b>

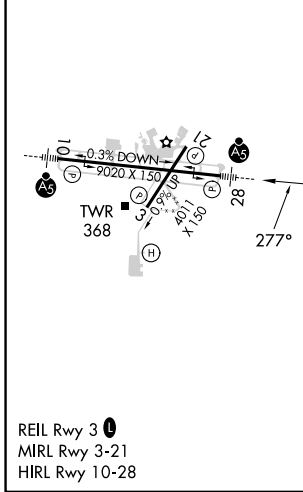
# ILS Z RWY 28

MONTGOMERY RGNL (DANNELLY FLD) (MGM)

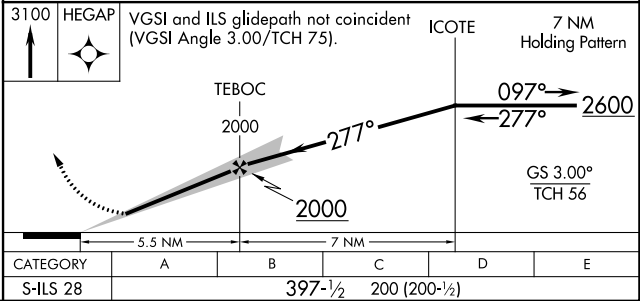
NA GPS required. For inop MALS, increase S-ILS 28 Cat E visibility to 3/4 mile.		MALS R 	MISSED APPROACH: Climb to 3100 direct HEGAP and hold.		
ATIS	MONTGOMERY APP CON *	DANNELLY TOWER *	GND CON	CLNC DEL	UNICOM
<b>120.675</b>	<b>124.0 363.025</b>	<b>119.7 (CTAF) 360.85</b>	<b>121.7 348.6</b>	<b>118.3 270.3</b>	<b>122.95</b>



ELEV 221	TDZE 197
----------	----------



## GPS REQUIRED



# ILS Z RWY 28

SE-4, 11 JUL 2024 to 08 AUG 2024

SE-4, 11 JUL 2024 to 08 AUG 2024