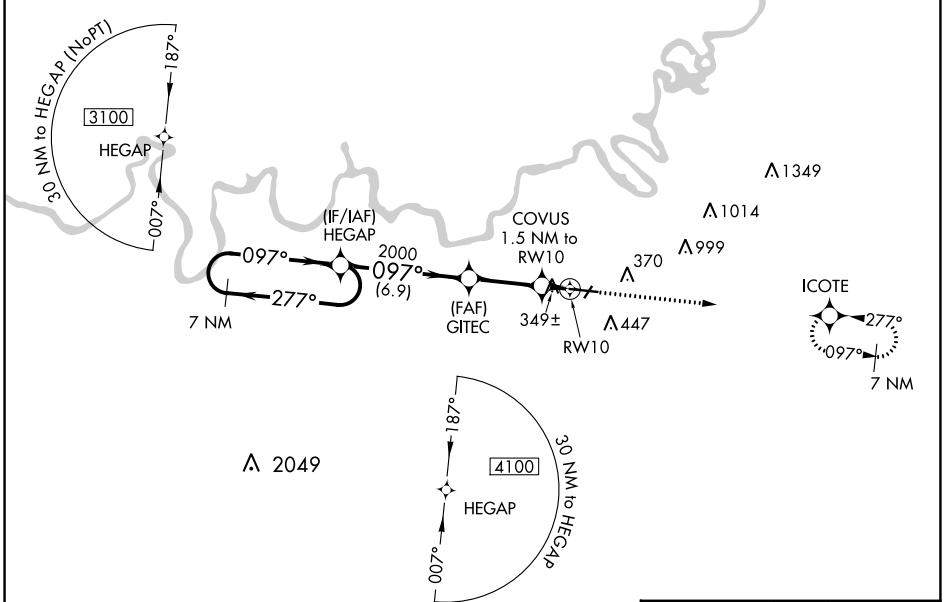


WAAS CH 50100 W10A	APP CRS 097°	Rwy Idg TDZE Apt Elev	9020 219 221
--	------------------------	-----------------------------	---

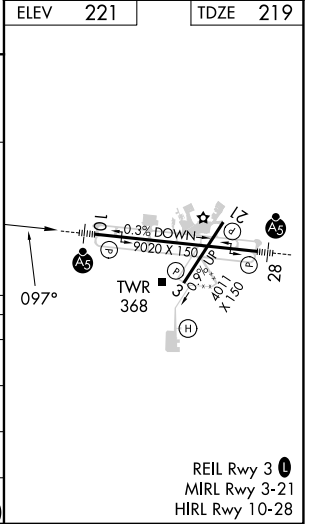
RNAV (GPS) RWY 10

MONTGOMERY RGNL (DANNELLY FLD) (MGM)

RNP APCH.		DANNELLY TOWER ★		GND CON	CLNC DEL	UNICOM
<p>▼ For uncompensated Baro-VNAV systems, LNAV/VNAV NA below -8°C (18°F) or above 54°C (130°F). For inop MALS, increase LPV Cat E visibility to RVR 4000; increase LNAV/VNAV Cat E visibility to RVR 5000; increase LNAV Cats C/D/E visibility to 1½ mile. Circling for Cat E NA north of Rwy 10-28. **RVR 1800 authorized with use of FD or AP or HUD to DA.</p>		<p>★ 119.7 (CTAF) 360.85</p>		<p>121.7 348.6</p>	<p>118.3 270.3</p>	<p>122.95</p>
ATIS	MONTGOMERY APP CON ★					
120.675	124.0 363.025					



<p>VGSI and RNAV glidepath not coincident (VGSI Angle 3.00/TCH 64).</p>					
<p>7 NM Holding Pattern</p>		<p>HEGAP</p>		<p>GITEC</p>	
<p>3100 ← 277°</p>		<p>← 097° →</p>		<p>2000</p>	
<p>GP 3.00° TCH 50</p>		<p>2000</p>		<p>*740</p>	
<p>6.9 NM</p>		<p>3.9 NM</p>		<p>0.5 NM 1 NM</p>	
<p>COVUS 1.5 NM to RWY 10</p>		<p>*1 NM to RWY 10</p>		<p>RWY 10</p>	
<p>2600</p>		<p>ICOTE</p>		<p>*LNAV only.</p>	
CATEGORY	A	B	C	D	E
LPV DA **	419/24		200 (200-½)		
LNAV/VNAV DA	530/24		311 (400-½)		
LNAV MDA	600/24	381 (400-½)		600/35 381 (400-¾)	
CIRCLING	700-1	479 (500-1)		800-1½ 579 (600-1½)	860-2 639 (700-2) 860-2¼ 639 (700-2¼)



REIL Rwy 3
MIRL Rwy 3-21
HIRL Rwy 10-28

SE-4, 11 JUL 2024 to 08 AUG 2024

SE-4, 11 JUL 2024 to 08 AUG 2024